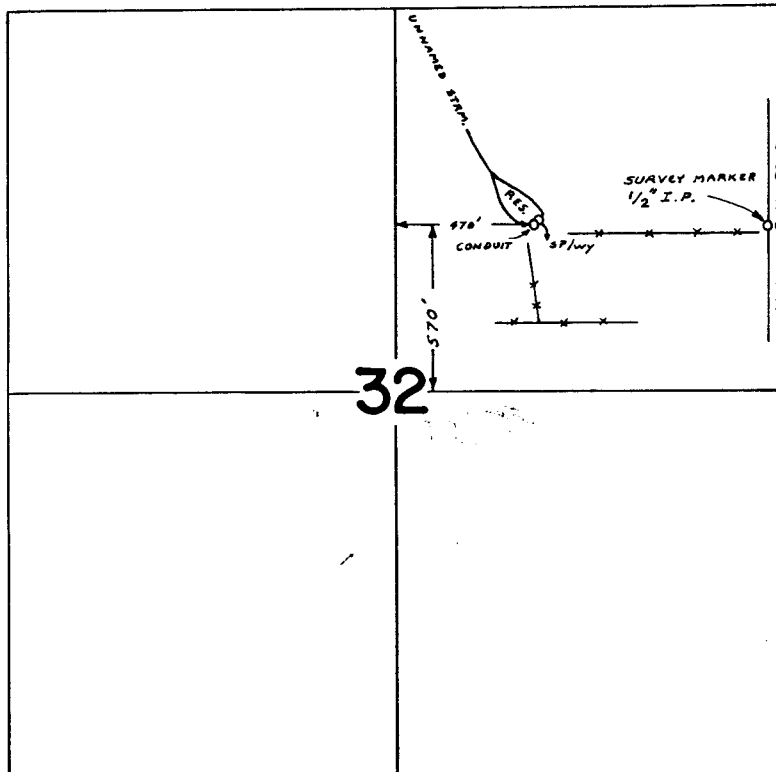


T. 36 S., R. 6 W., W.M.

RECEIVED

DEC 22 1981

WM. DIST. 14
GRANTS PASS, ORE.



SCALE: 1" = 660 FT.

FINAL PROOF SURVEY
UNDER

Application No. R-53330 Permit No. R-7680
57528 43346

IN NAME OF
LEO F. HOEBING

Surveyed NOV. 1 1978 by B. SUND

P.T.S.-1978-14-D