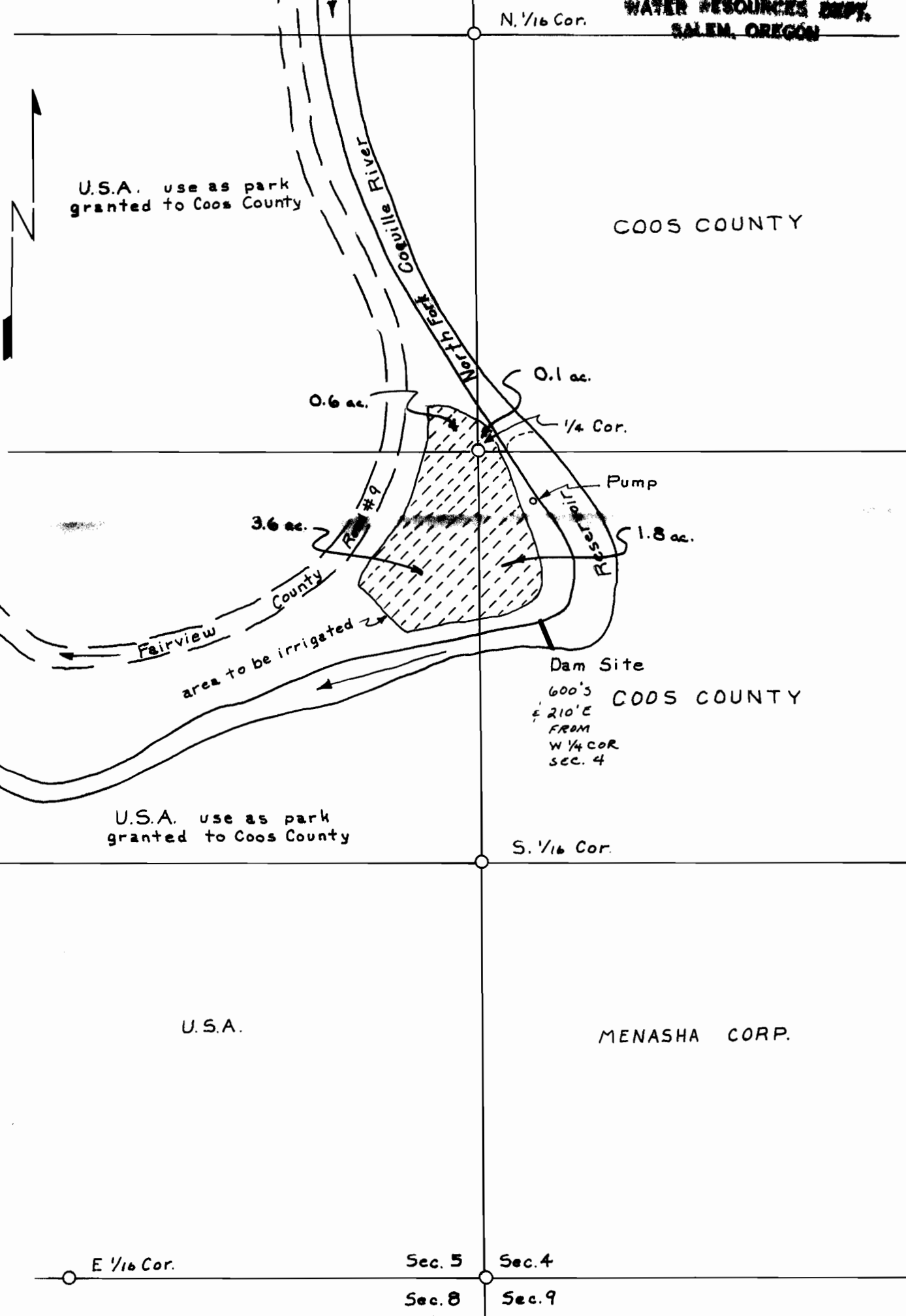


RECEIVED

APR 3 1978

WATER RESOURCES DEPT.
SALEM, OREGON



Application No.
Permit No.

57242, R57241
43497, R 7203

COOS COUNTY ENGINEERING DEPT.
For
COOS COUNTY PARKS DEPT.
LAVERNE PARK
VICINITY DRAWING
in Sections 4 & 5 T.27S. R.11W.W.M.
Scale: 1" = 400' Date: 12-2-77
By: K. S.