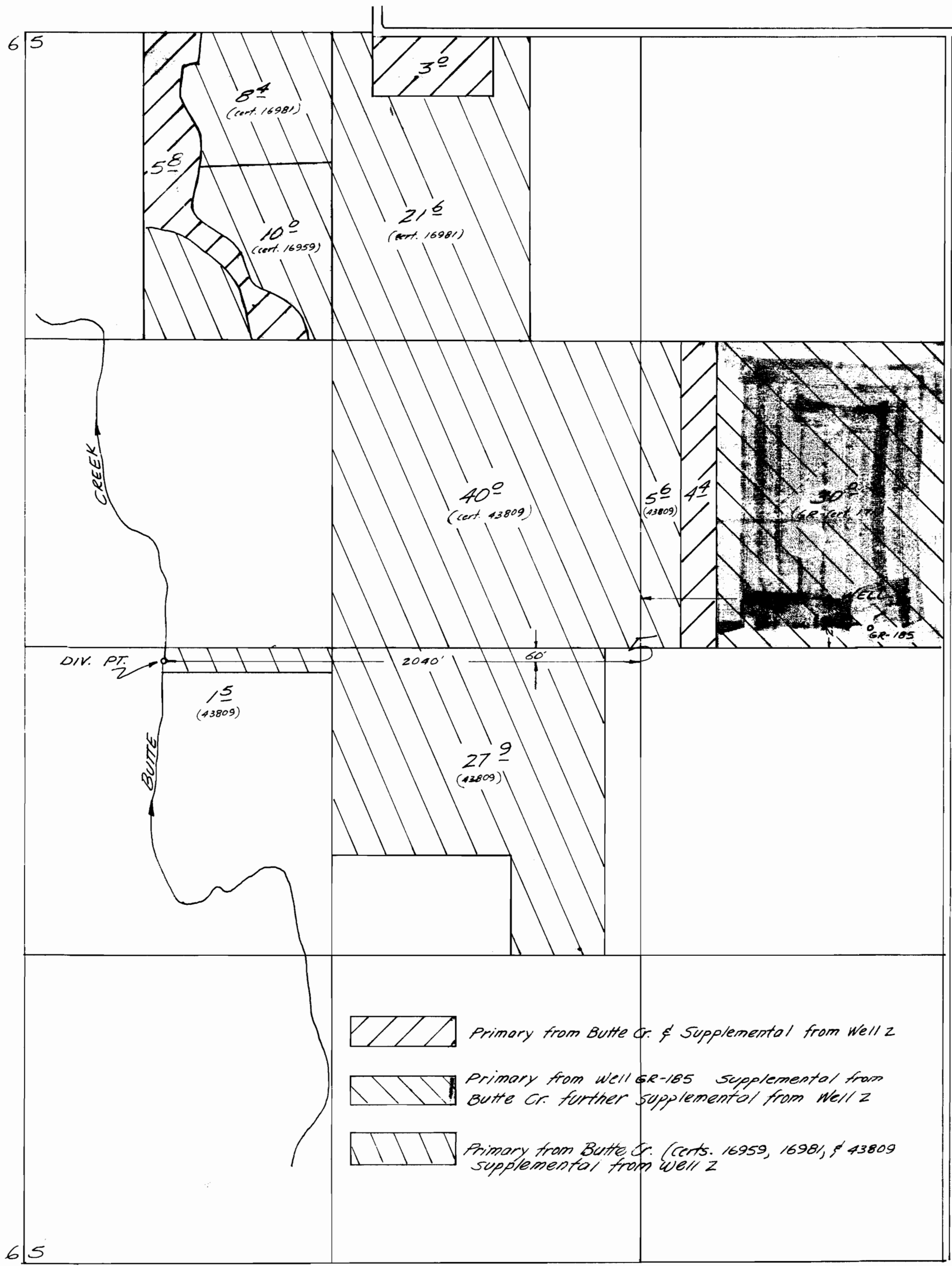
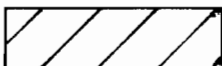
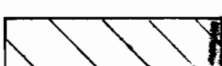



Application No. 57870 4935
Permit No. 43511 G 8289

T.6S. R.1E. W.M.
1" = 400'

DATE OF SURVEY: _____
Wm. James
PREPARED AND FORWARDED BY
THE SURVEYOR



-  Primary from Butte Cr. & Supplemental from Well 2
-  Primary from Well GR-185 Supplemental from Butte Cr. further supplemental from Well 2
-  Primary from Butte Cr. (certs. 16959, 16981, & 43809 supplemental from Well 2