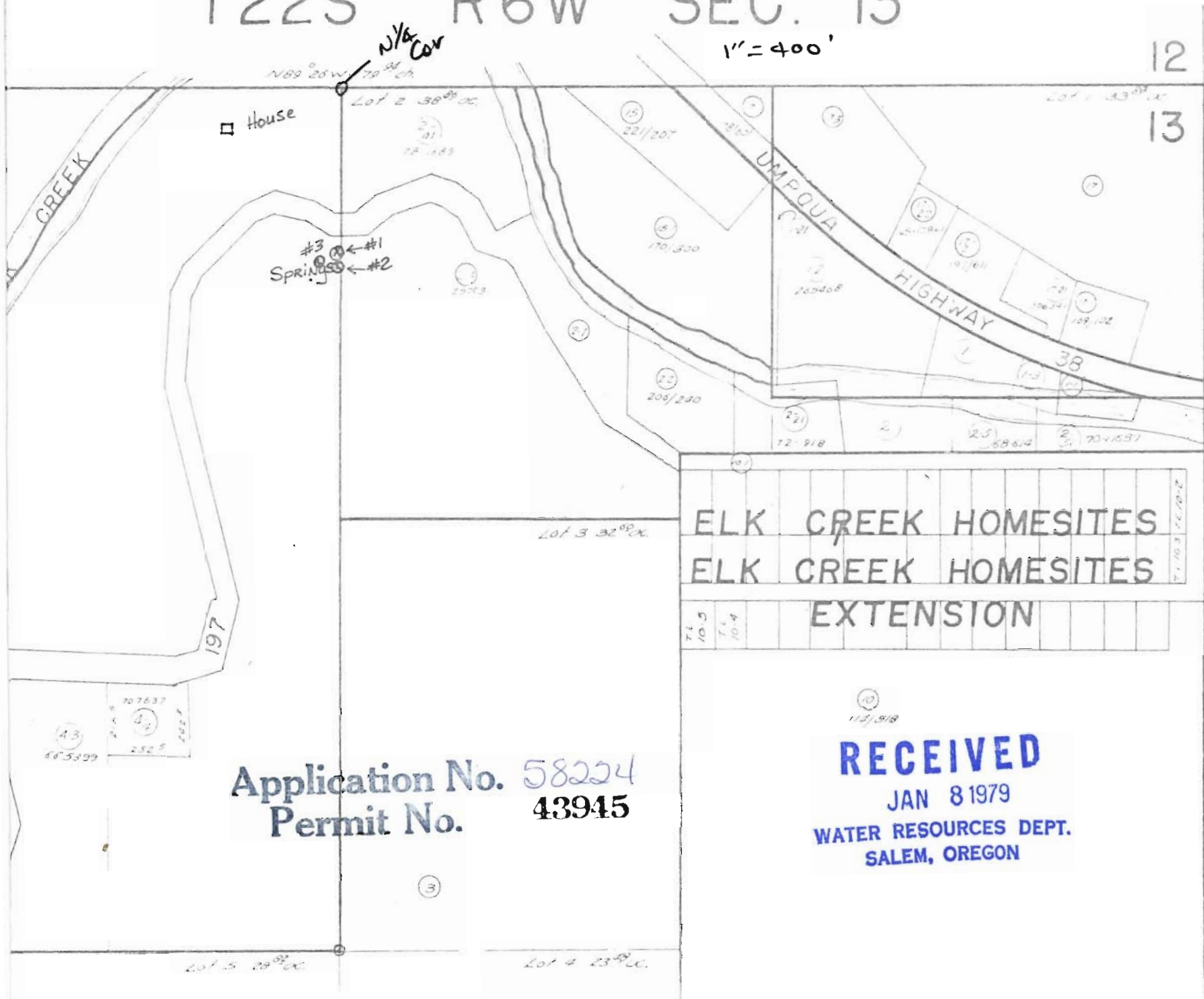


T22S R6W SEC. 13

1" = 400'



P.o.d. #1:
505' S.; 5' W.

P.o.d. #2:
550' S.; 5' W.

P.o.d. #3:
535' S.; 65' W.

from
N/4 Cor
Sec 13

Application No. 58224
Permit No. 43945

ELK CREEK HOMESITES
ELK CREEK HOMESITES
EXTENSION

RECEIVED
JAN 8 1979
WATER RESOURCES DEPT.
SALEM, OREGON