

# SHOWING SUBDIVISIONS OF A PART OF THE N. CURRY ESTATE

Superseded IN

SECTIONS 31 & 32 T. 26 S. R. 6 W. SECTIONS 58 & 6 T. 27 S. R. 6 W. W. M.

## DOUGLAS Co. ORE.

As Surveyed and Platted for The N. Curry Estate  
By Surveyor E. Summers Office of F.C. Frear Co Surv.

1920

Scale 1" = 400'

Application No. 58358  
Permit No.

**RECEIVED**  
APR 20 1979  
WATER RESOURCES DEPT.  
SALEM, OREGON

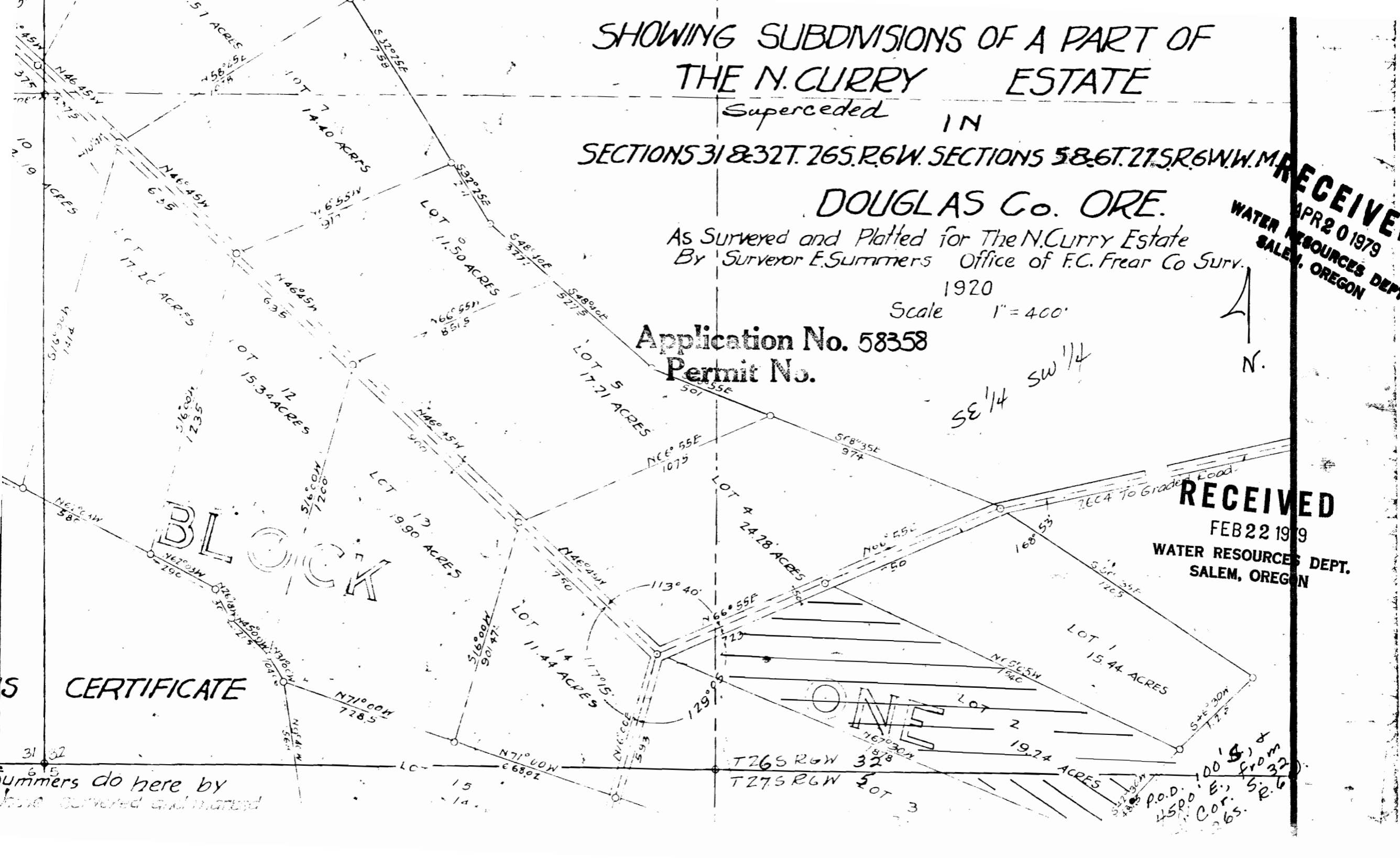


SE 1/4 SW 1/4

**RECEIVED**  
FEB 22 1979  
WATER RESOURCES DEPT.  
SALEM, OREGON

# BLOCK

# ONE



S CERTIFICATE

Summers do here by  
have surveyed and plat

P.O.D. 1500  
Cor. 265  
E. S.R. 6