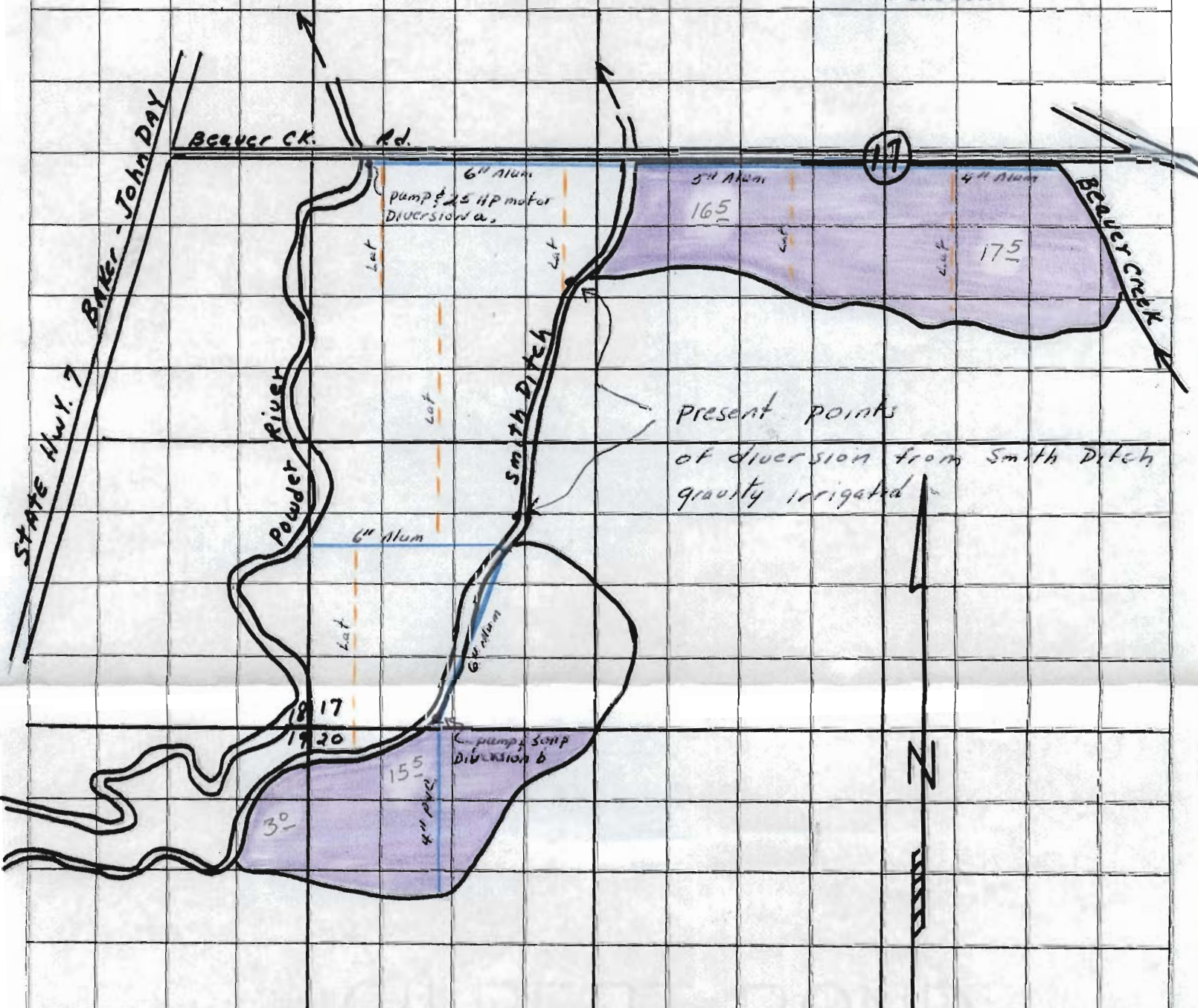


Application No. 51869
 Permit No. 44155

RECEIVED
 APR 24 1974
 STATE ENGINEER
 SALEM, OREGON



Present points
 of diversion from Smith Ditch
 gravity irrigated



Application of
 water to be appropriated

Scale: 1" = 660'
 Twp. 10S., Rng. 40E.
 Baker County, Oregon

Diversion point for Smith Ditch
 is 950 ft. S & 1925 ft. W. from
 NE corner of Section 19

20