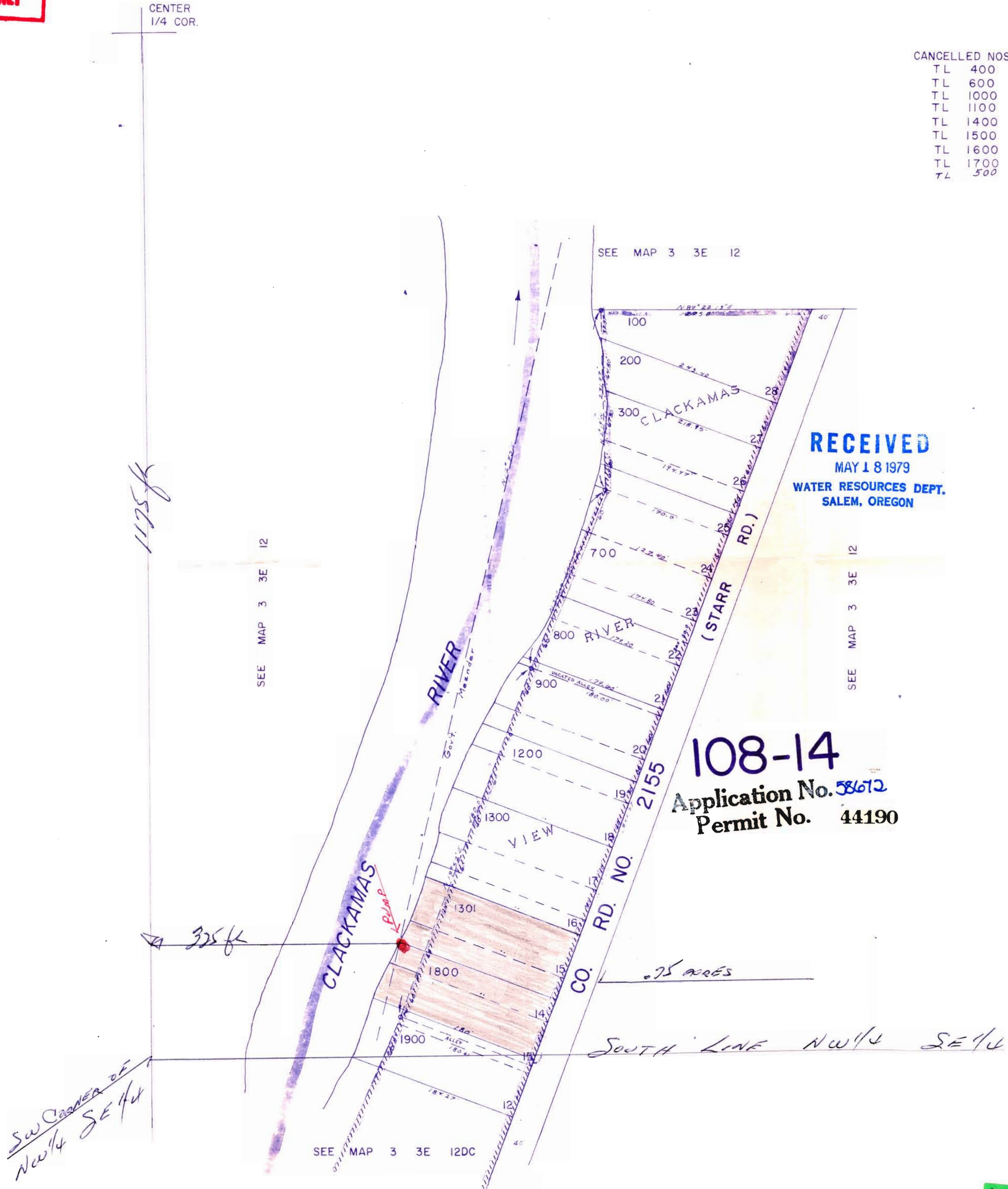


CLACKAMAS COUNTY

1"=100'

THIS MAP WAS PREPARED FOR ASSESSMENT PURPOSES ONLY

- CANCELLED NOS.
- TL 400
 - TL 600
 - TL 1000
 - TL 1100
 - TL 1400
 - TL 1500
 - TL 1600
 - TL 1700
 - TL 500



RECEIVED

MAY 18 1979
WATER RESOURCES DEPT.
SALEM, OREGON

108-14

Application No. 38672
Permit No. 44190

RECEIVED

JUL - 9 1979
WATER RESOURCES DEPT.
SALEM, OREGON

A. J. NIZICH
223 BARKER AVE
OREGON CITY OR 97045

THIS MAP WAS PREPARED FOR ASSESSMENT PURPOSES ONLY

NW 1/4 SE 1/4 SEC. 12 T.3S. R.3E. W.M.
CLACKAMAS COUNTY

3 3E 12DB

1" = 100'

- CANCELLED NOS.
- TL 400
 - TL 600
 - TL 1000
 - TL 1100
 - TL 1400
 - TL 1500
 - TL 1600
 - TL 1700
 - 7L 500

CENTER
1/4 COR.

LOT 3 (NW 1/4 SE 1/4)

SEE MAP 3 3E 12

RECEIVED

MAY 18 1979
WATER RESOURCES DEPT.
SALEM, OREGON

SEE MAP 3 3E 12

SEE MAP 3 3E 12

108-14

Application No. 58672
Permit No. 44190

*FD. OSEAL
IRR.*



LAND FOUND
IRR. 3-28-86
R.C.M.

0.25 ACRES

SOUTH LINE NW 1/4 SE 1/4

SEE MAP 3 3E 12DC

*SW CORNER of
NW 1/4 SE 1/4*

RECEIVED

JUL 9 1979
WATER RESOURCES DEPT.
SALEM, OREGON

A J NIZICH
223 BARKER AVE
OREGON CITY OR 97045

3 3E 12DB

Book 31