

V.M.

IS 3 33

RECEIVED

JUN 26 1979

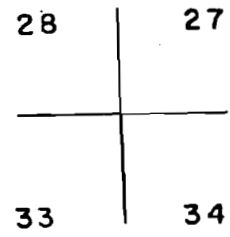
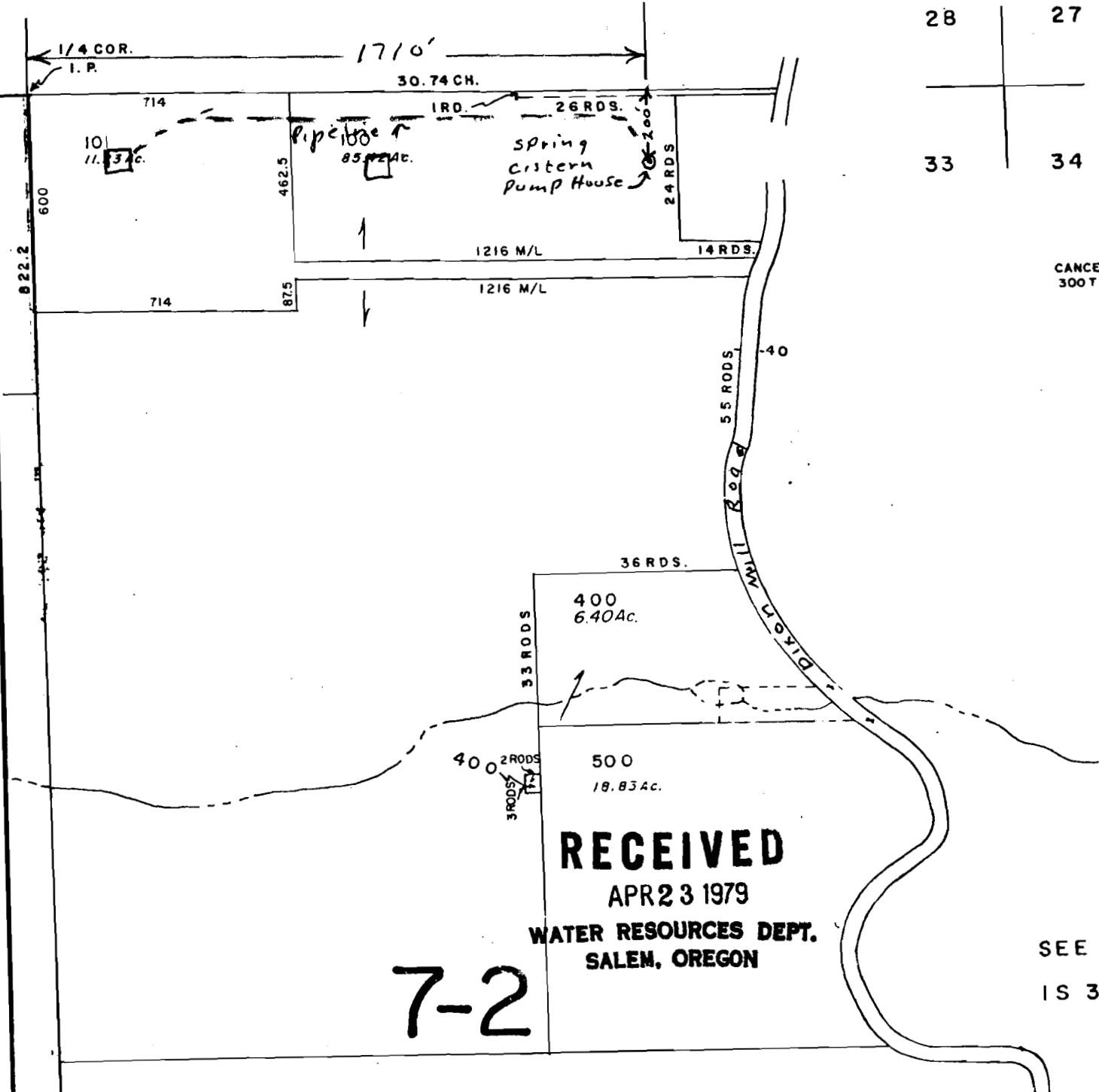
WATER RESOURCES DEPT
SALEM, OREGON

NE 1/4 SECTION 33, T1S R3W

SCALE: 1" = 400'

Application No. 58573 Permit No. 44203

MAP
3 28



CANCELLED
300 T1, 501

RECEIVED

APR 23 1979

WATER RESOURCES DEPT.
SALEM, OREGON

7-2

SEE MAP
IS 3 34