

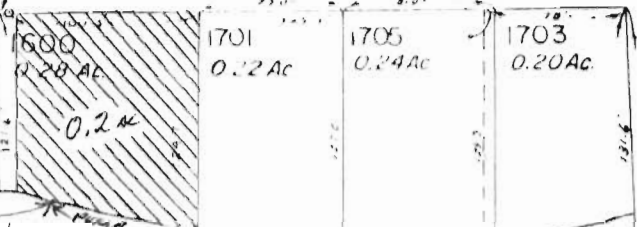
T. 13 S. R. 31 E SEC 23
 APPLICATION MAP FOR
 LINDA DUNN
 APPROVED

500
 0.42 AC.

191
 0.15 AC.



RD.



← JOHN DAY

RIVER

DIV. PT.
 1645' N + 1350'
 E. FROM SW COR.
 SEC 23.

1403
 0.45 AC.

1702
 1.15 AC.

NE 1/4 SW 1/4

1700
 0.68 AC.

1708
 0.22 AC.

1706
 0.33 AC.

ST.
 NW BRIDGE

SEE MAP 13 31 23CA

RECEIVED

MAY 09 1979

WATER RESOURCES DEPT.
 SALEM, OREGON

SCALE 1" = 100 FT.

THIS MAP PREPARED BY:
Robert J. [Signature] 5-7-79
 FROM INFORMATION FURNISHED BY
 THE APPLICANT.

SEE MAP 13 31 23CD

Application No. 58636
 Permit No. 44214

13 31 23CB
 JOHN DAY

MAP REVISED 4-10-77