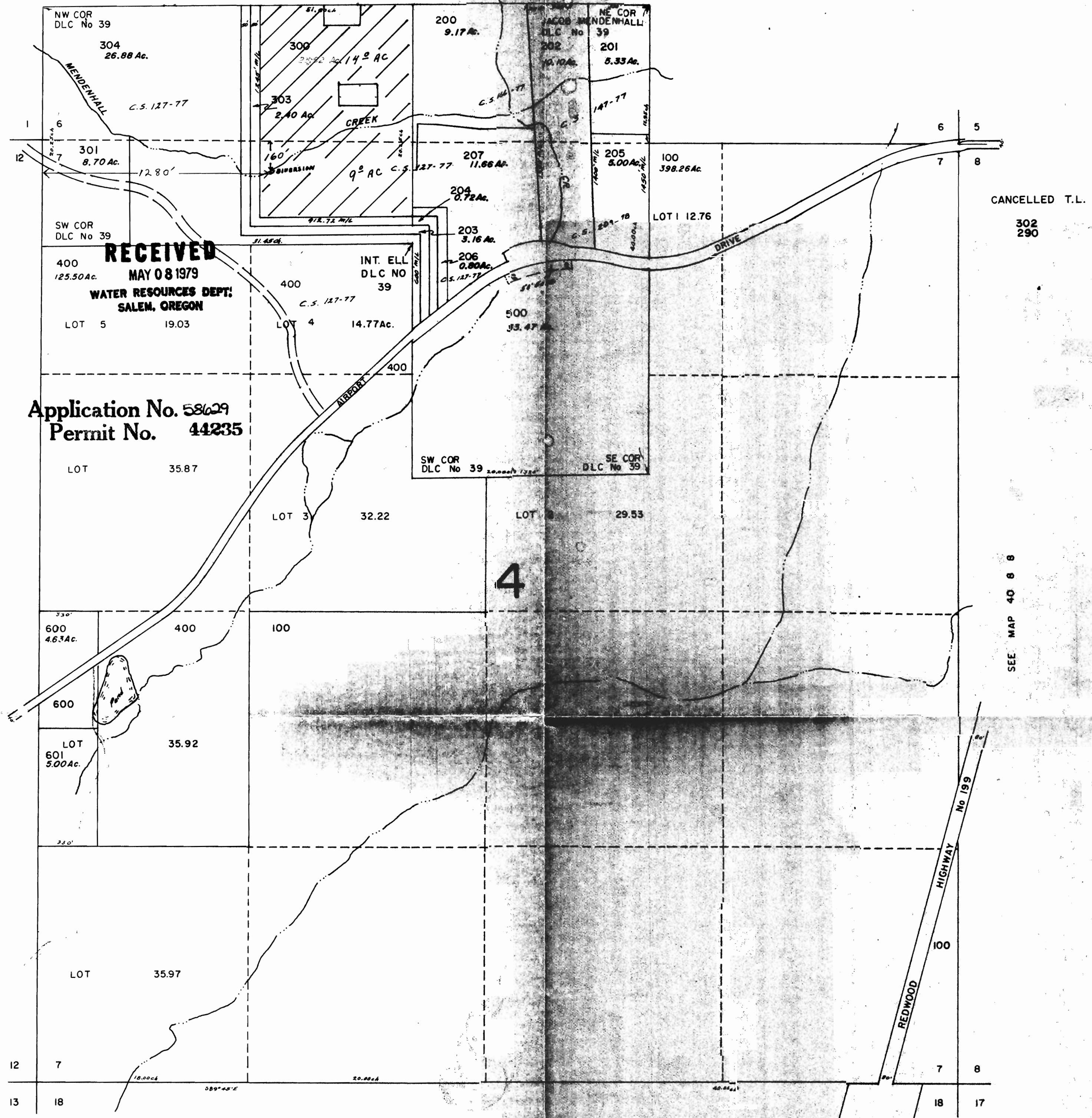


SEE MAP 40 8 9

1" = 400'



RECEIVED

MAY 08 1979

WATER RESOURCES DEPT.
SALEM, OREGON

Application No. 58629
Permit No. 44235

4

CANCELLED T.L.
302
290

SEE MAP 40 9

SEE MAP 40 8 8

SEE MAP 40 8 10