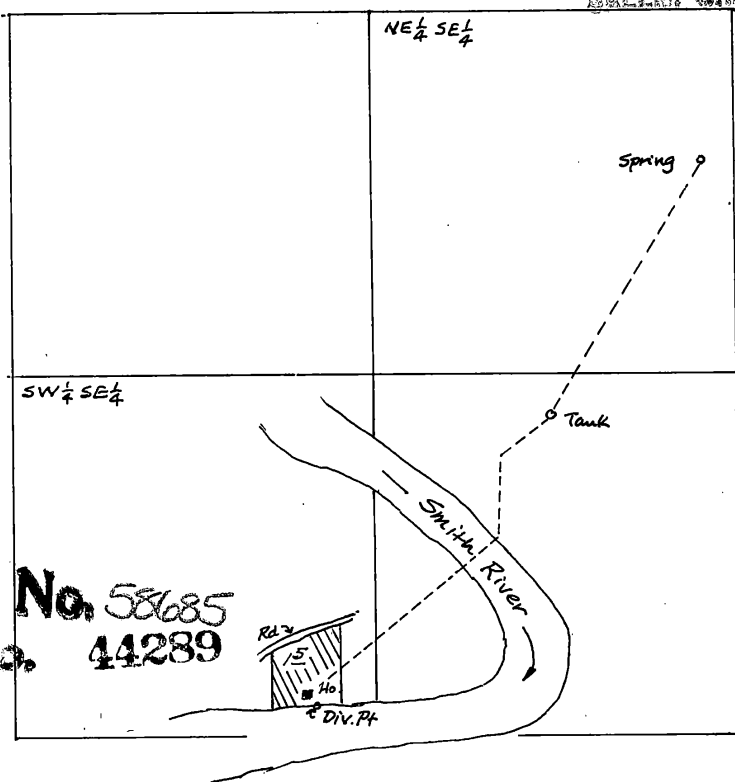


RECEIVED
 MAY 21 1979
 WATER RESOURCES DEPT.
 SALEM, OREGON



Application No. 58685
 Permit No. 44289

Scale: 8" = 1 mile
 SE 1/4 Sec. 31, T. 20S. R. 9W.

Spring: 550' S and 200' W from E 1/4 cor sec. 31
 Div. Pt.: 2560' S and 1580' W from E 1/4 cor sec 31.