

(Dropping the West Div. Pt.)

Sec 31 T. 39 S. R. 2 W.  
Josephine Co.  
1" = 400'

W. M.

39 8 31

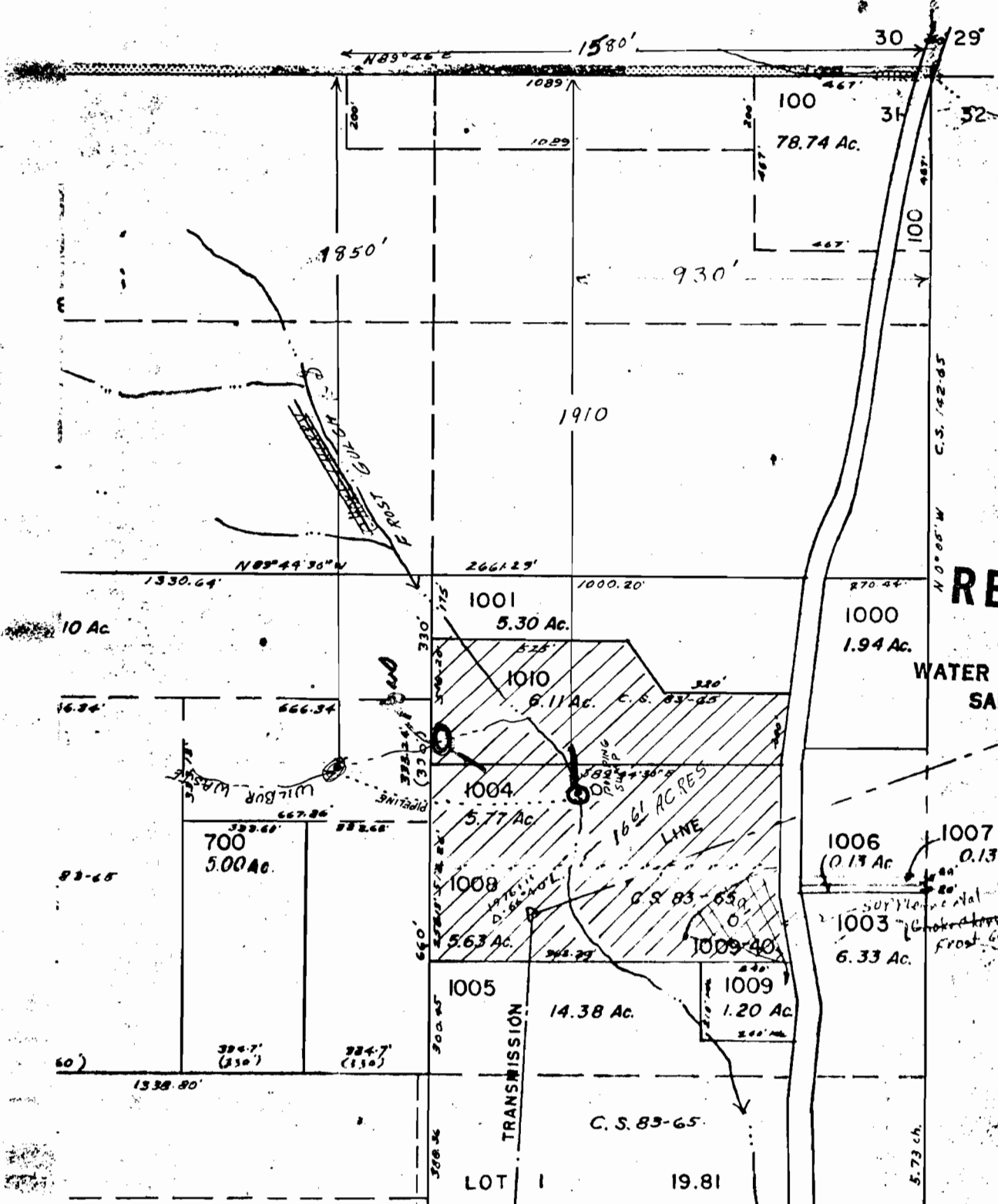
Y

Application No. 58536  
Permit No. 44331

RECEIVED

JUL 24 1979

WATER RESOURCES DEPT  
SALEM, OREGON



- Cancelled
- T.L. 1100
- 602
- 800
- 900
- 200
- 300
- 1104
- 1009
- 1090

RECEIVED

APR 16 1979

WATER RESOURCES DEPT.  
SALEM, OREGON

1006 (0.13 Ac) 1007 0.13 Ac.

1003 6.33 Ac.

1009 1.20 Ac.

1009-40

5.73 ch.

SEE MAP 39 8 32

LOT I 19.81