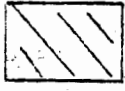


BUSSARD, LYCHE, et. al.

PROPOSED

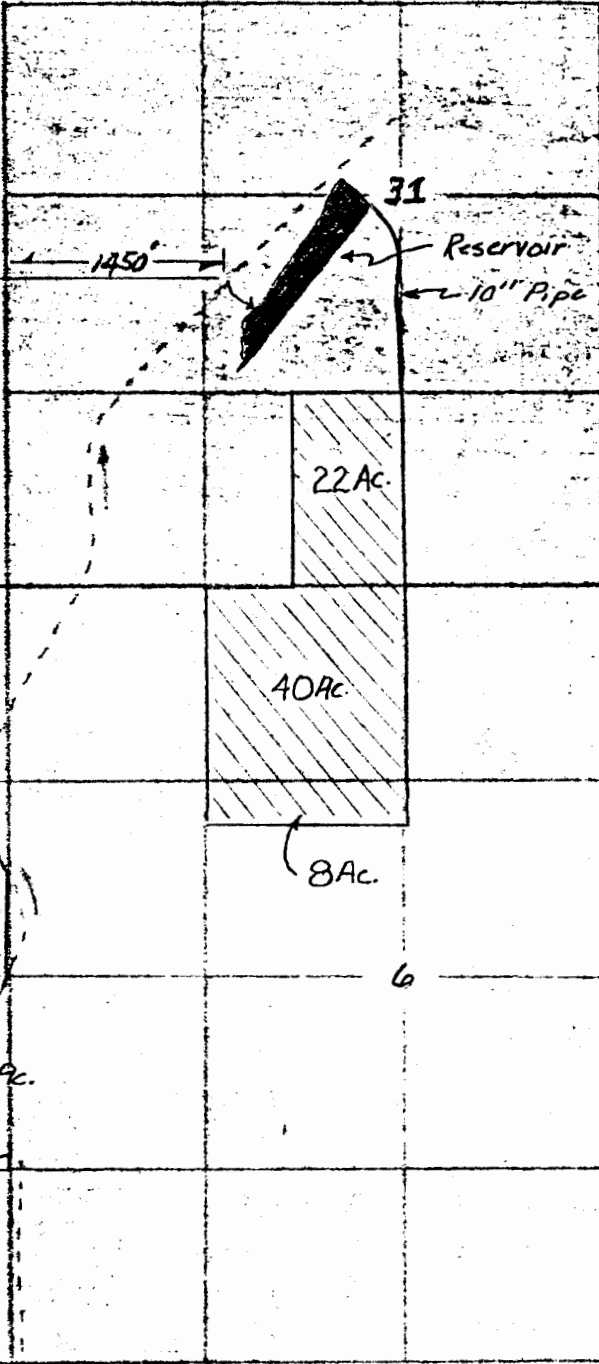
WATER RIGHT TRANSFER



Proposed Irrigated Area



Authorized Irrigated Area



JEFFERSON CO.
DESCHUTES CO.

T.135
T.145.

Application No. R-57710
58583
Permit No. R 7938
44416

4" = 1 mi



SQUAW CREEK CANAL

JUL 31 1978

WATER RESOURCES DEPT.
SALEM, OREGON

R.I.E.
R.I.Z.E.

Design By	Drawn By GH	Checked By GH	Approved By	Survey By	Date	Scale	Drawing No. 413 00199-1
-----------	----------------	------------------	-------------	-----------	------	-------	----------------------------

Century West Engineering Corporation

Sand.
Oregon