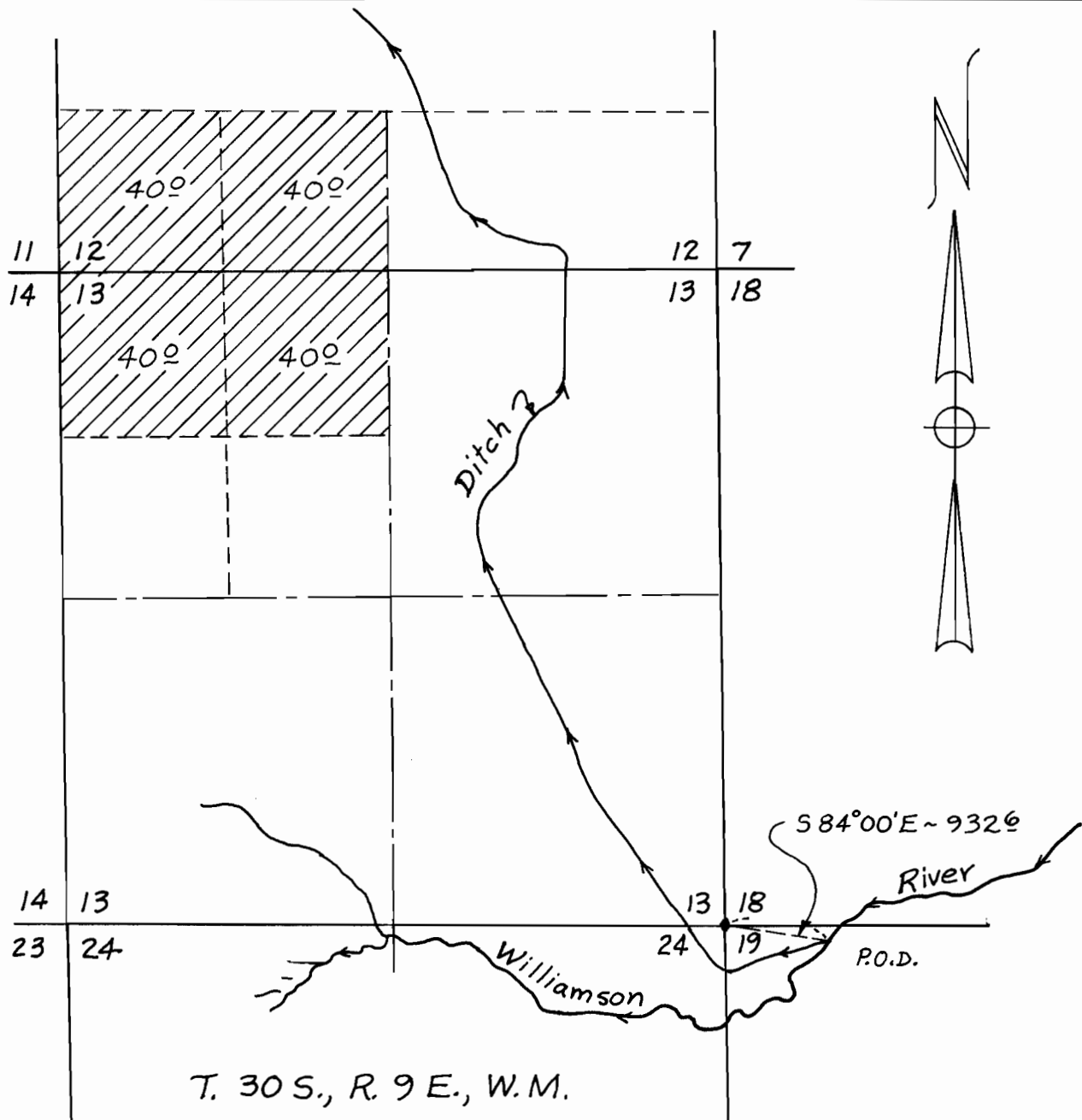


RECEIVED

JUL 16 1979

WATER RESOURCES DEPT  
SALEM, OREGON



Application No. 58416  
Permit No. 44427

MAP SHOWING LANDS TO BE IRRIGATED  
BY  
**HORTON FAMILY TRUST**  
IN  
SECTIONS 12 & 13, T. 30 S., R. 9 E., W.M.  
KLAMATH COUNTY, OREGON  
Scale: 1" = 1320'  
Map prepared by: **WILLIAM L. WALES & Associates**  
Consulting Engineers  
Klamath Falls, Oregon  
July, 1979