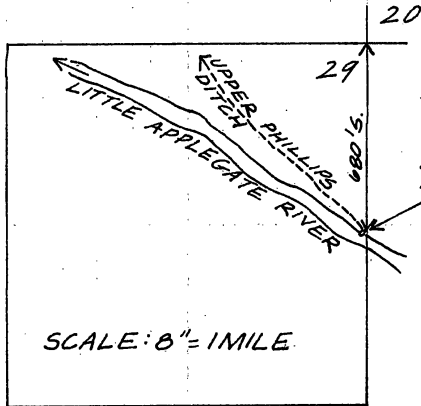


T.39S., R.2W., W.M.



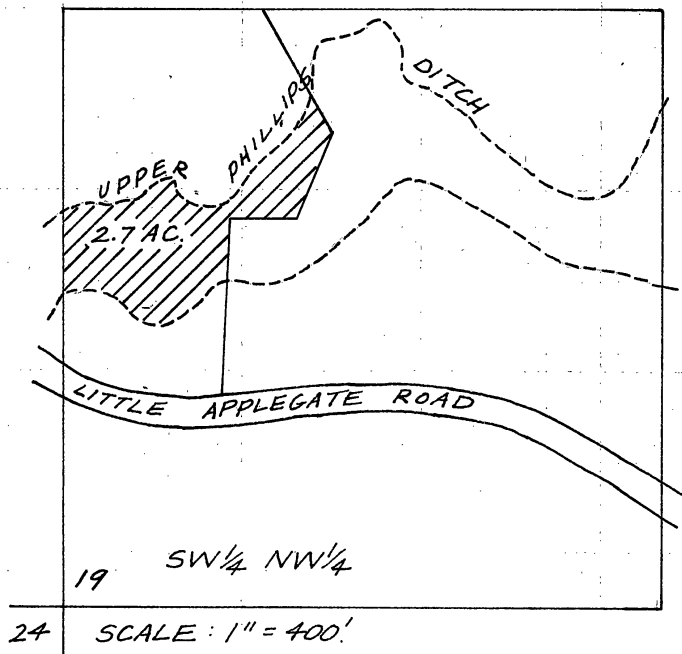
RECEIVED

AUG 27 1979

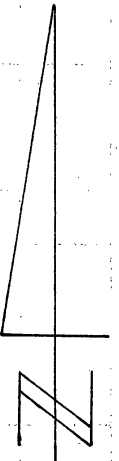
WATER RESOURCES DEPT
SALEM, OREGON

Application No. 59265
Permit No. 44509

T.39S., R.2W., W.M.



MAP TO ACCOMPANY APPLICATION
OF CREATURE ENTERPRISES, INC.
C/O RICHARD BACH FOR IRRIGATION.



8-22-79