

APPLICATION # 59442

SW1/4 NE1/4 SECTION 26 T.2S. R.6E. W.M.
CLACKAMAS COUNTY

RECEIVED
OCT 21 1979
WATER RESOURCES DEPT
SALEM, OREGON
SEE MAP 2 OF 200A

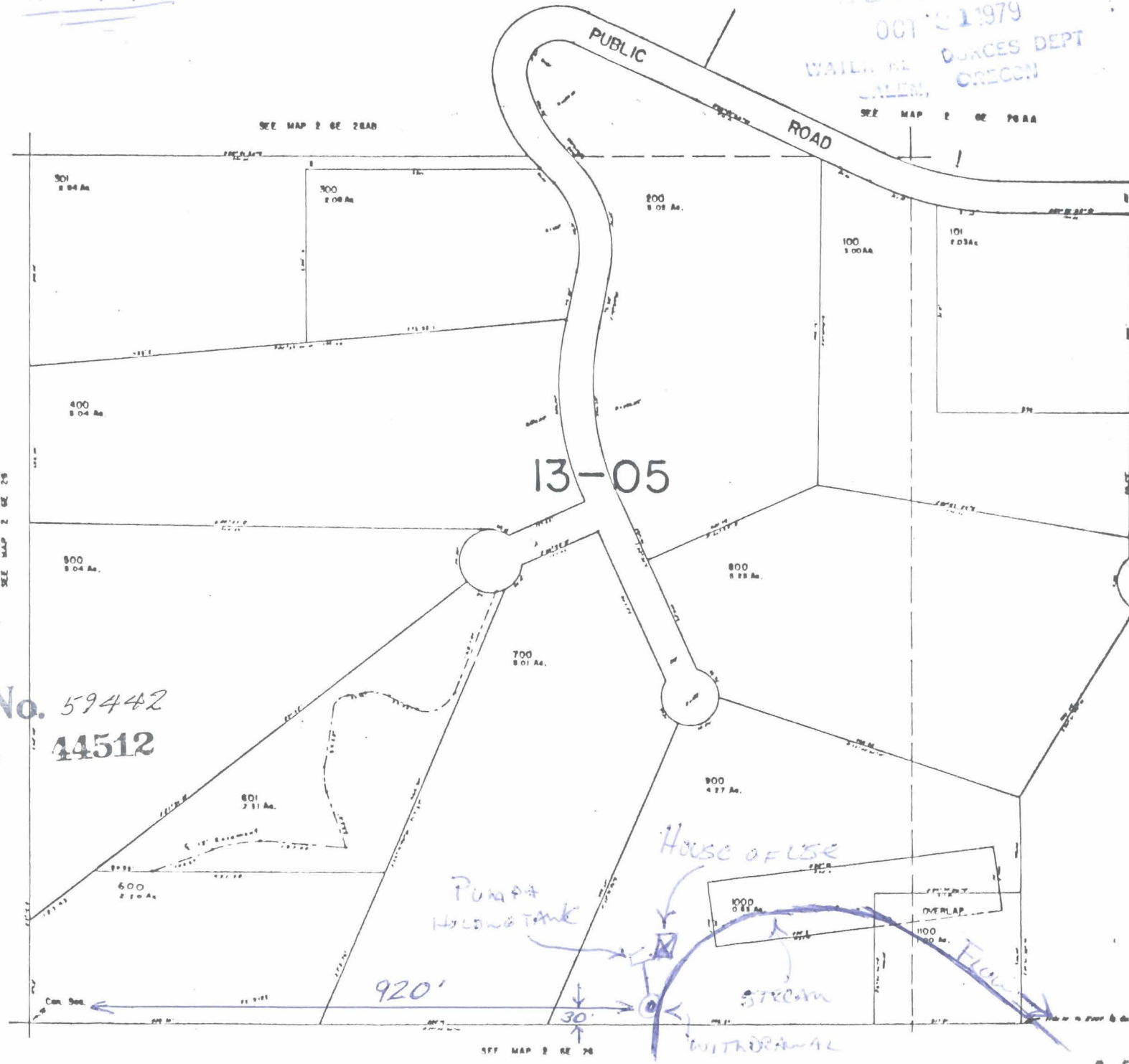
SEE MAP 2 OF 200A

SCALE
1" = 200'

NORTH

House to be
SITIALIZED WILL BE
60' NORTH OF POINT
OF WITH DEMAND
DESCRIBED ON APPLICATION

Application No. 59442
Permit No. 44512



13-05

HOUSE OF USE

PUMP & HOLDING TANK

STREAM

WITHDRAWAL

920'

30'

OVERLAP

SEE MAP 2 OF 20