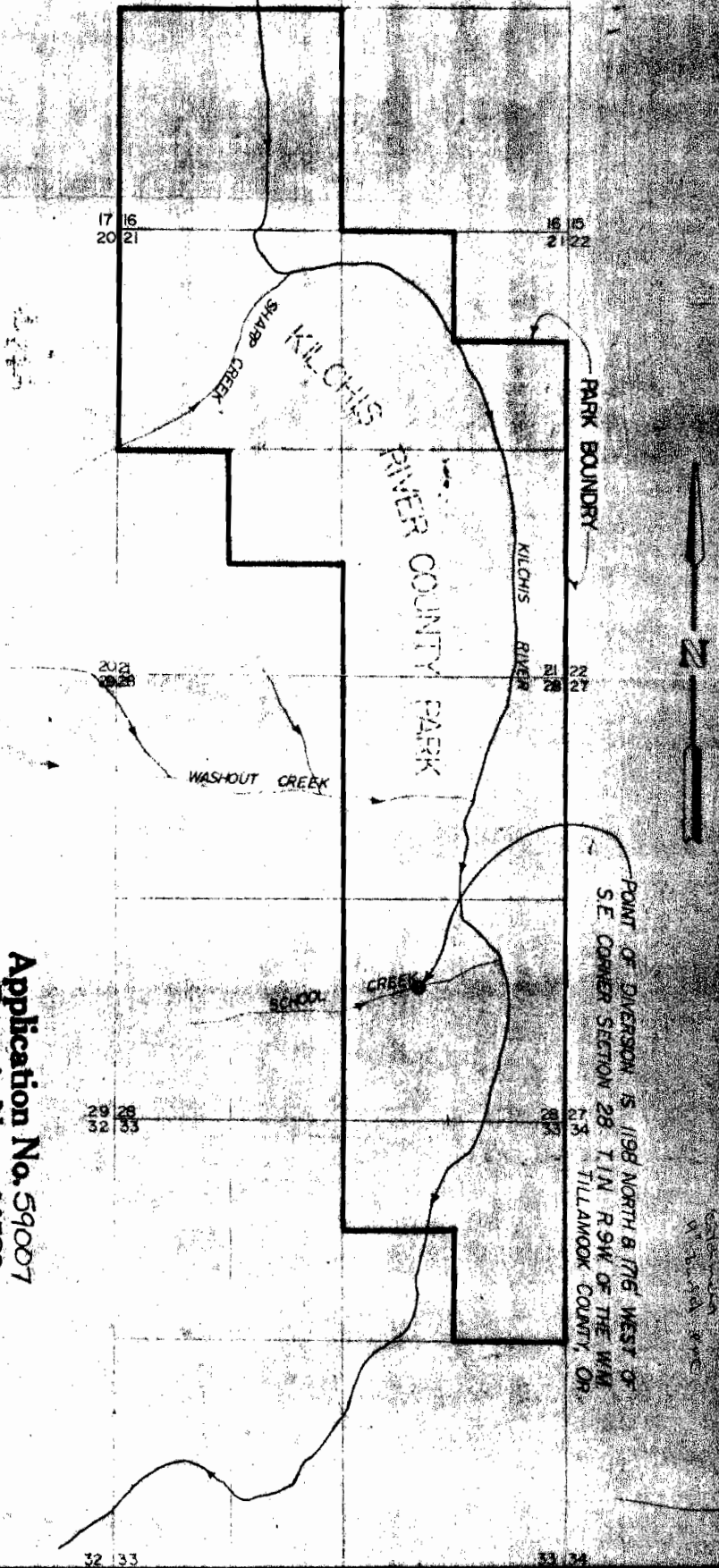


RECEIVED  
 AUG 2 1979  
 WATER RESOURCES  
 SALIDA DIVISION



**KILCHIS RIVER COUNTY PARK**  
 TILLAMOOK COUNTY PARKS DEPARTMENT  
 SECTION 16, 21, 28 & 33 T.1N. R.9W. of the WM.

**Application No. 59007**  
**Permit No. 44589**

|                                  |                                                     |
|----------------------------------|-----------------------------------------------------|
| <b>WATER RIGHTS MAP</b>          |                                                     |
| <b>KILCHIS RIVER COUNTY PARK</b> |                                                     |
| Scale: 1" = 1/4 MILE             | Date: 8/2/79                                        |
| Design: MGB                      | Revised:                                            |
| Drawn: C.C.A.                    | BOATWRIGHT ENGINEERING, INC.                        |
| Checked:                         | 3613 Twelfth Street S.E.<br>SALISBURY, OREGON 97132 |
|                                  | SHEET                                               |
|                                  | 1                                                   |

POINT OF DIVERSION IS 198' NORTH & 76' WEST OF  
 S.E. CORNER SECTION 28 T.1N. R.9W. OF THE WM.  
 TILLAMOOK COUNTY, OR.

Copyright  
 1979  
 M. J. ...

