

See Map 17 03 23

all within Stevens Dec #46

See Map 17 03 22 4 1

See Map 17 03 23



9-21-17

17 03 23 3 3

RECEIVED
JAN 28 1980
WATER RESOURCES DEPT.
SILLEN, OREGON

Application No. 59735
Permit No. 45901

See Map 17 03 23

Application No. 59735
Permit No.



See Map 17 03 22 4 1

See Map 17 03 23

N.W. Cor.
W.C. Spencer
D.L.C. No. 60

THIRD ADD. TO
MCKENZIE
MANOR

See Map 17 03 23 3 3

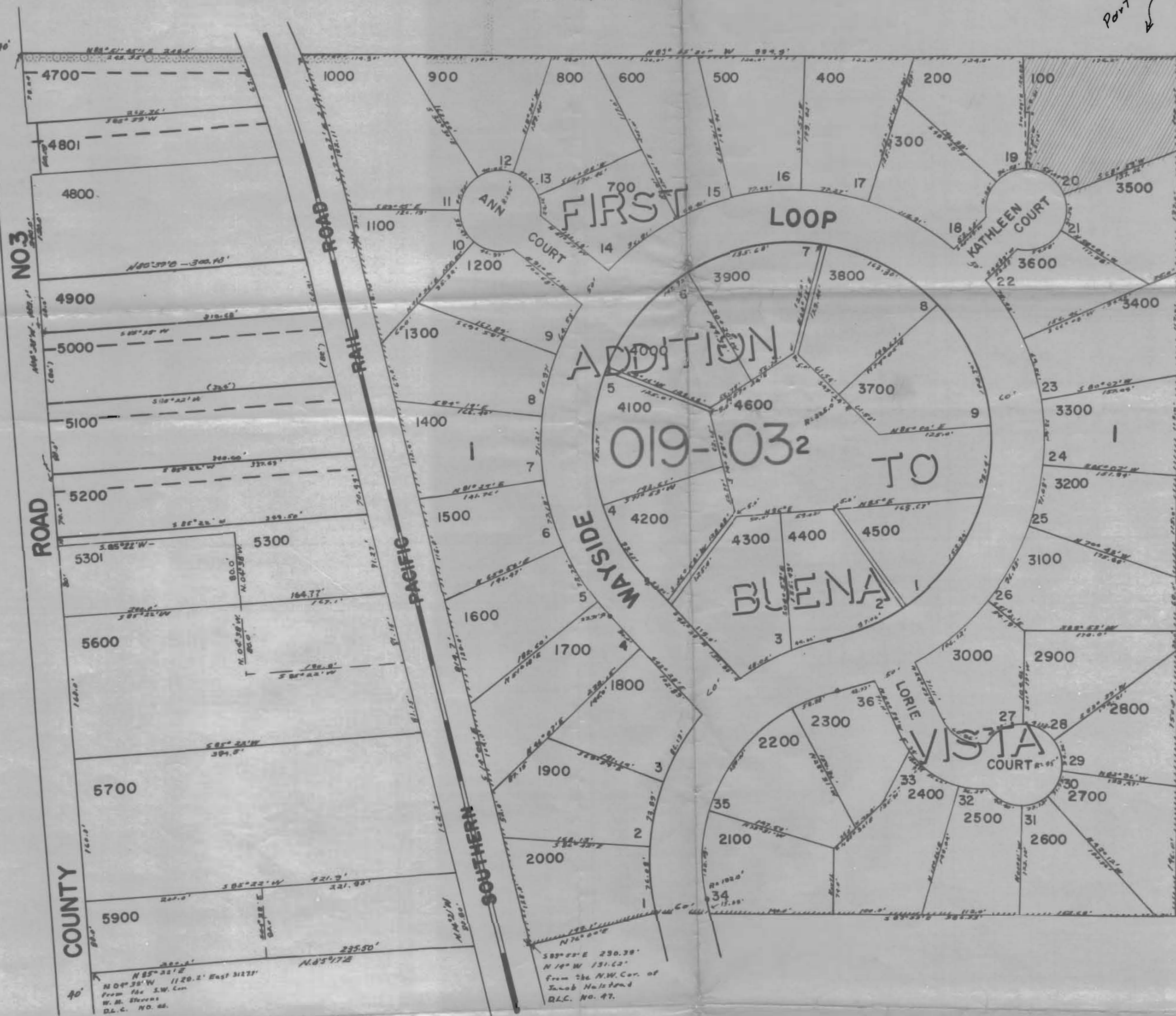
LANE COUNTY

1" = 100'

Application No. 59735
Permit No.

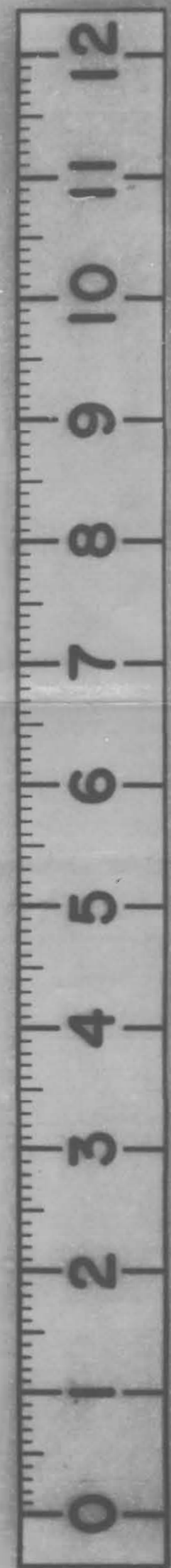
See Map 17 03 22

Part 12 Ac



See Map 17 03 23

See Map 17 03 22 4 4



RECEIVED
 JAN 28 1980
 WATER RESOURCES DEPT
 SALEM, OREGON
 Application No. 59735
 Permit No. 59735

1/16 Cor.

1/4 Cor.

1/16 Cor.

1/16 Cor.

LANE COUNTY

1" = 100'

RECEIVED
JAN 28 1980
WATER RESOURCES DEPT.
SHEILA OREGON

Application No. 59735
Permit No. 45591

1/16 Cor.

1/4 Cor.
all within Stevens DEC #46

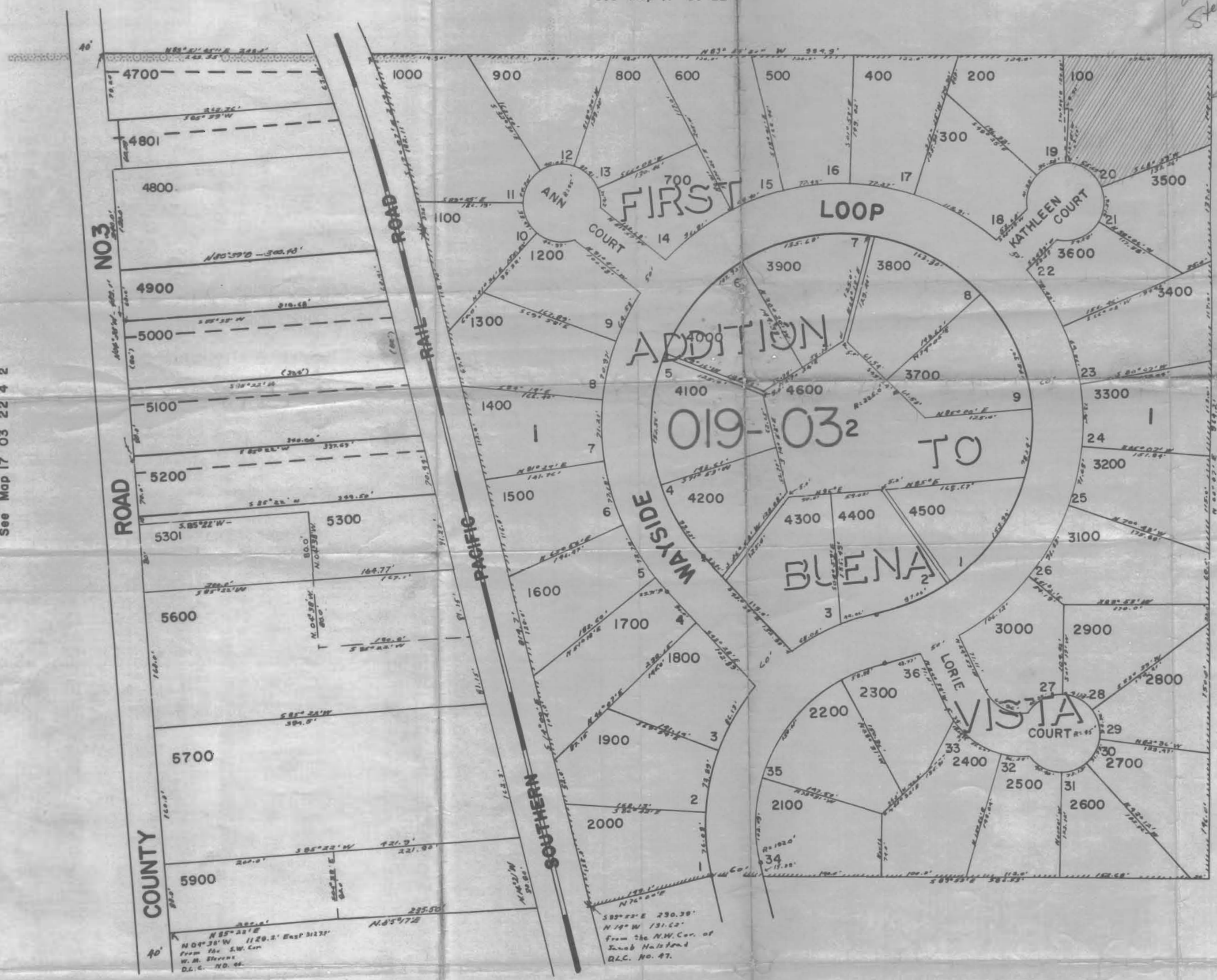
See Map 17 03 22

50.52 ac

See Map 17 03 22 4 2

See Map 17 03 23

See Map 17 03 22 4 4



1/16 Cor.

1/16 Cor.

N 85° 22' E 1129.2' East 3123'
From the S.W. Cor.
W.M. Stevens
D.L.C. No. 46

S 89° 23' E 290.39'
N 19° W 191.62'
From the N.W. Cor. of
Jacob Halshead
D.L.C. No. 47.