

Ingrams Bros. Ranch

Sec. 11, T28S; R12W. Wm

Sec. 14, T28S; R12W. Wm.

Coos County



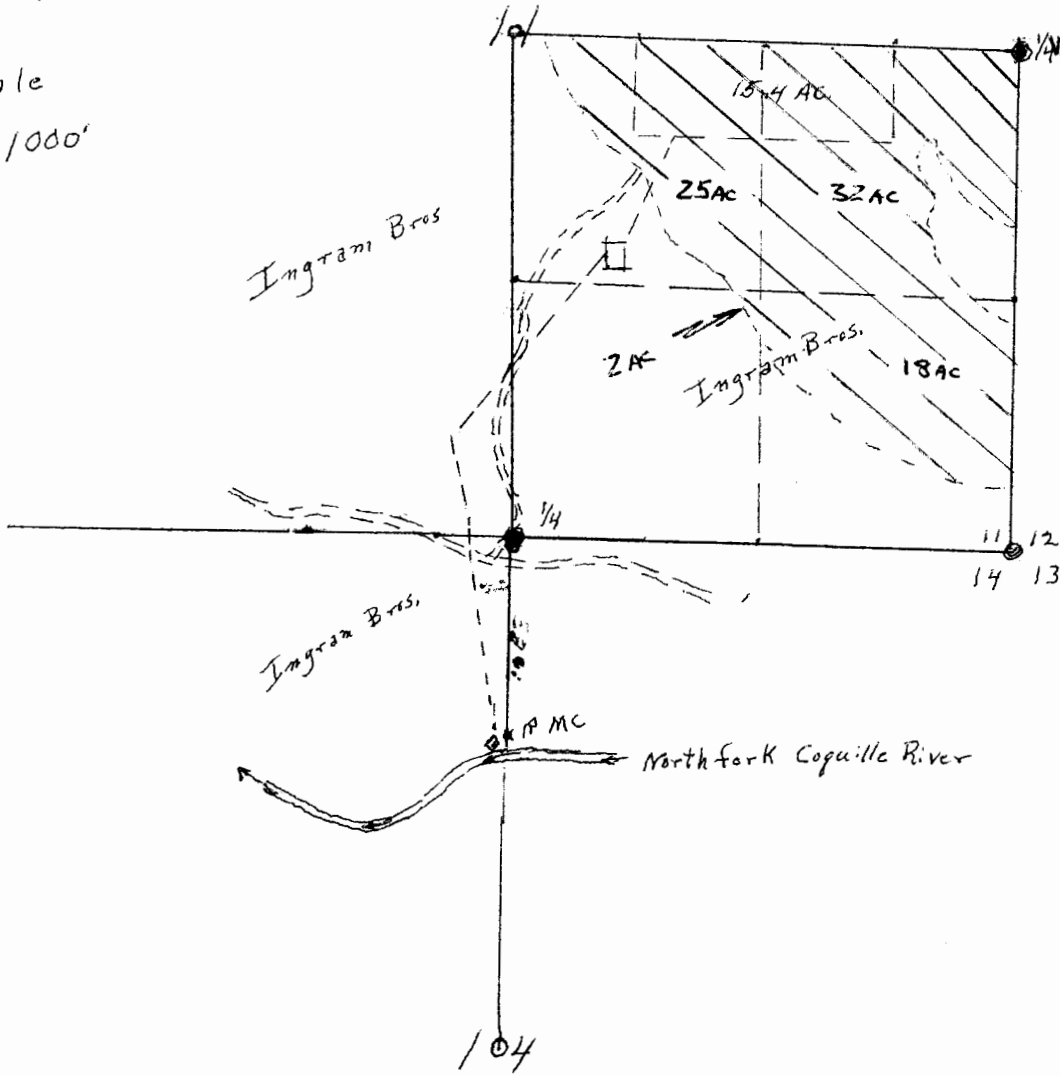
RECEIVED

JUN 1 1980

WATER RESOURCES DEPT
SALEM, OREGON

Scale

1" = 1000'



Legend

- - - = Pipe line
- ⊙ = location of pump
- = Holding Pond
- == = Roads
- - - = Irrigation Area.

Application No. 60249

Permit No. 45167