

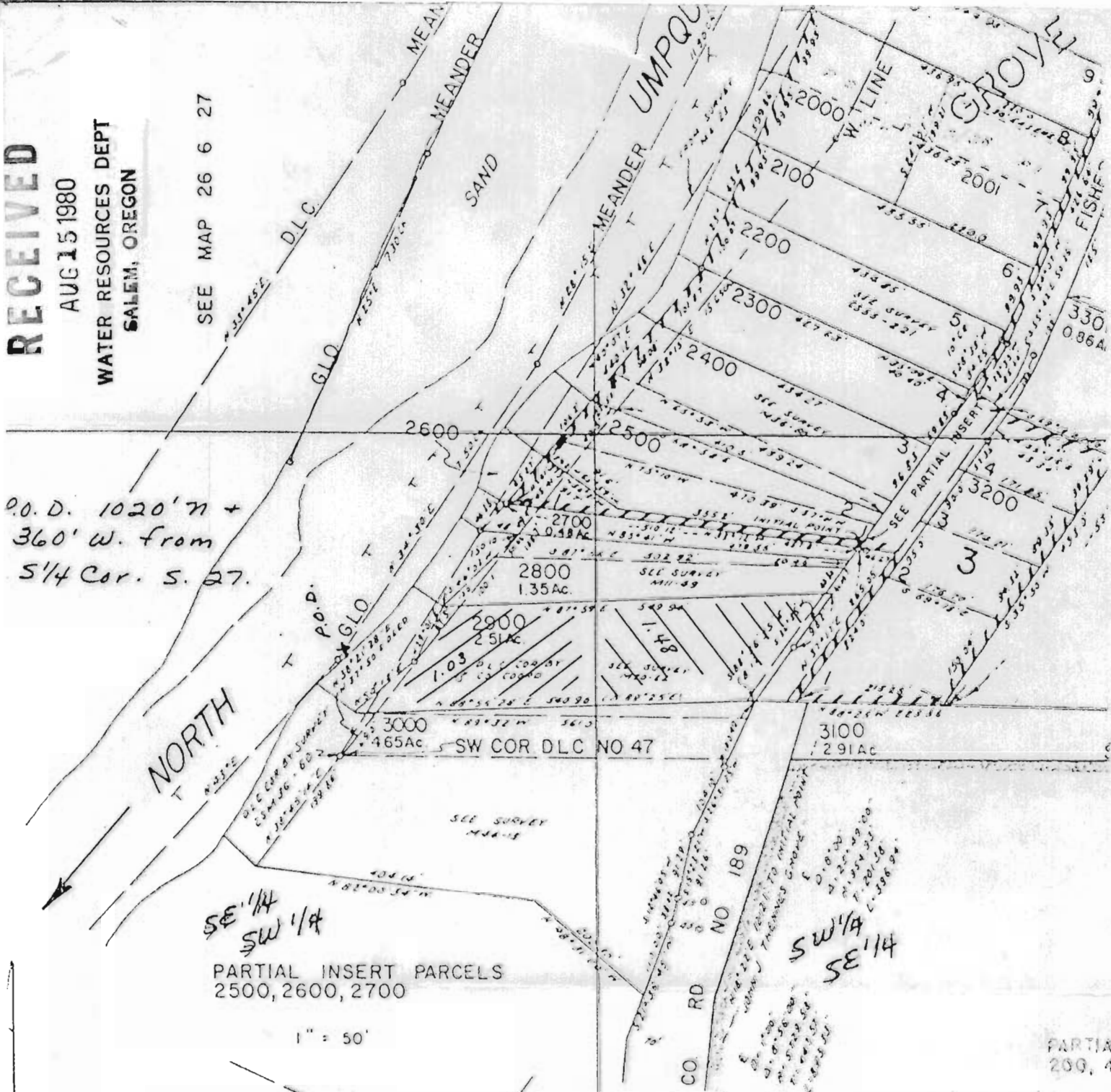
RECEIVED

AUG 15 1980

WATER RESOURCES DEPT  
SALEM, OREGON

SEE MAP 26 6 27

P.O.D. 1020' N +  
360' W. from  
S 1/4 Cor. S. 27.



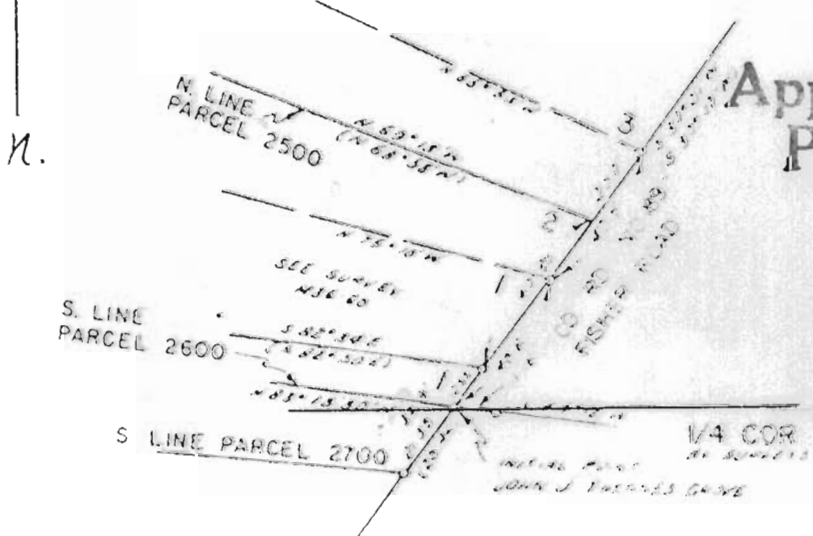
SE 1/4  
SW 1/4

PARTIAL INSERT PARCELS  
2500, 2600, 2700

1" = 50'

SW 1/4  
SE 1/4

Application No. 60496  
Permit No. 45320



1" = 200'

T. 26 S. R. 6 W. S. 27