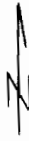


**RECEIVED**

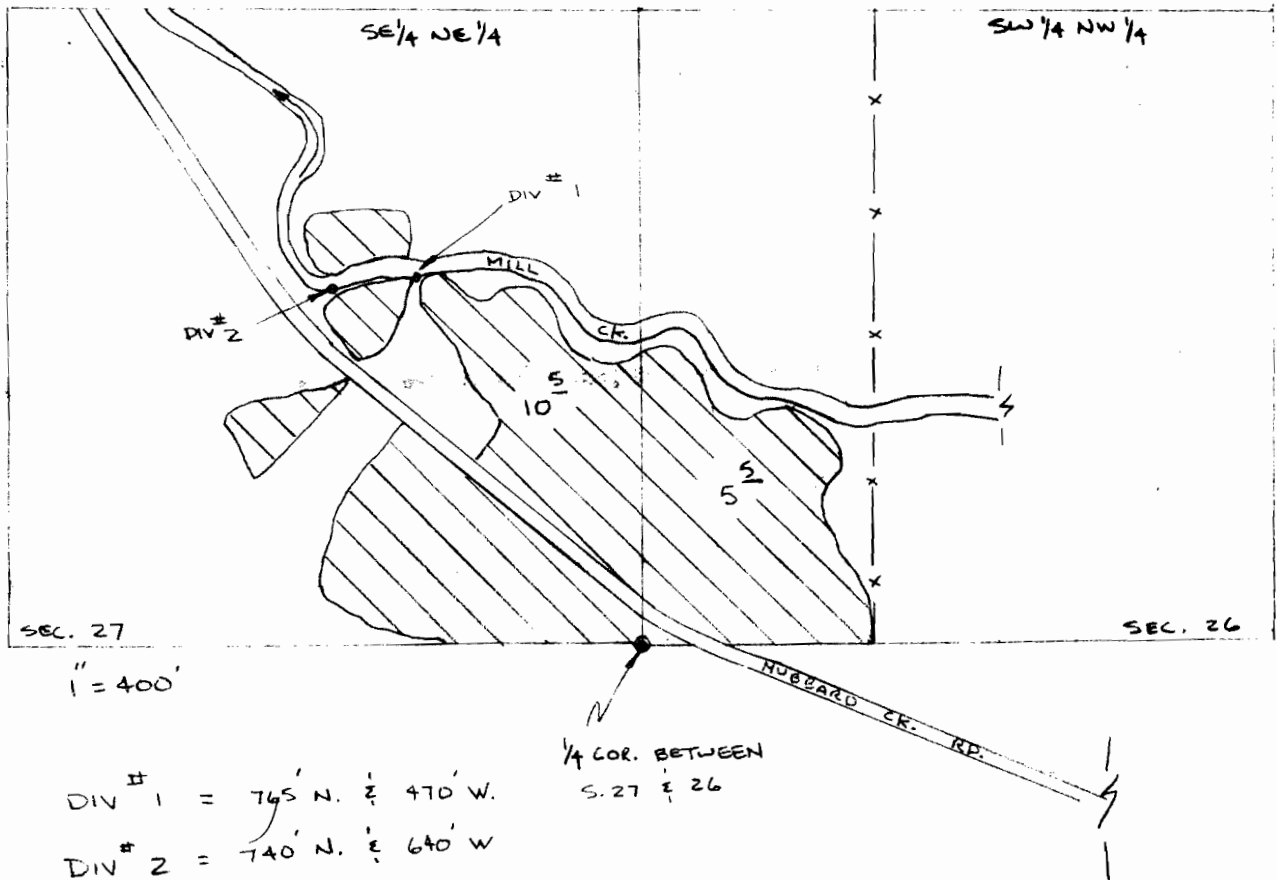
AUG 25 1983

WATER RESOURCES DEPT.  
SALEM, OREGON

Application No. 65614  
Permit No. 48007



T. 25 S. R. 7 W. S. 27 & 26



DIV # 1 = 765' N. & 470' W.

DIV # 2 = 740' N. & 640' W

BOTH FROM THE 1/4 COR  
BETWEEN S. 27 & 26