

RECEIVED

DEC 10 1980

WATER RESOURCES DEPT
SALEM, OREGON

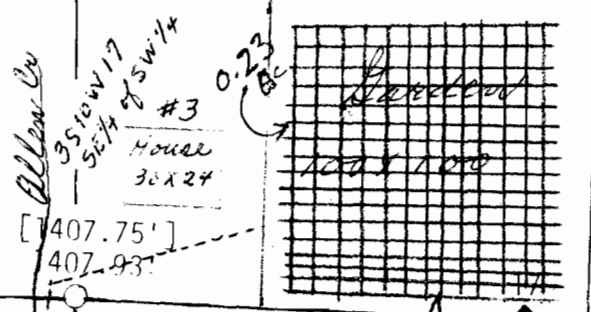
18 17
19 20

[1407.75']
1407.94'

Section corner
found C.S. monument

set 1/2" bar
(Poysky BT
now missing)
corner falls in
apparent center of
County Road

G.L.O. = N 89°49' W 39.85 ch.
[N 87°09' W 2815.5]
N 87°09' W Control meridian



TRANSIT & E.D.M. SURVEY MAP
for

HARLEY BRADLEY

in

Section 20, T. 3 S., R. 10 W., W.M.

FEBRUARY 1980

SCALE 1" = 60 FEET

[] = data quote from map

F 40-58 by Poysky

[d] = data quote from excepted
tract in Deed Book 174/589

Application No. 60630
Permit No. 45780

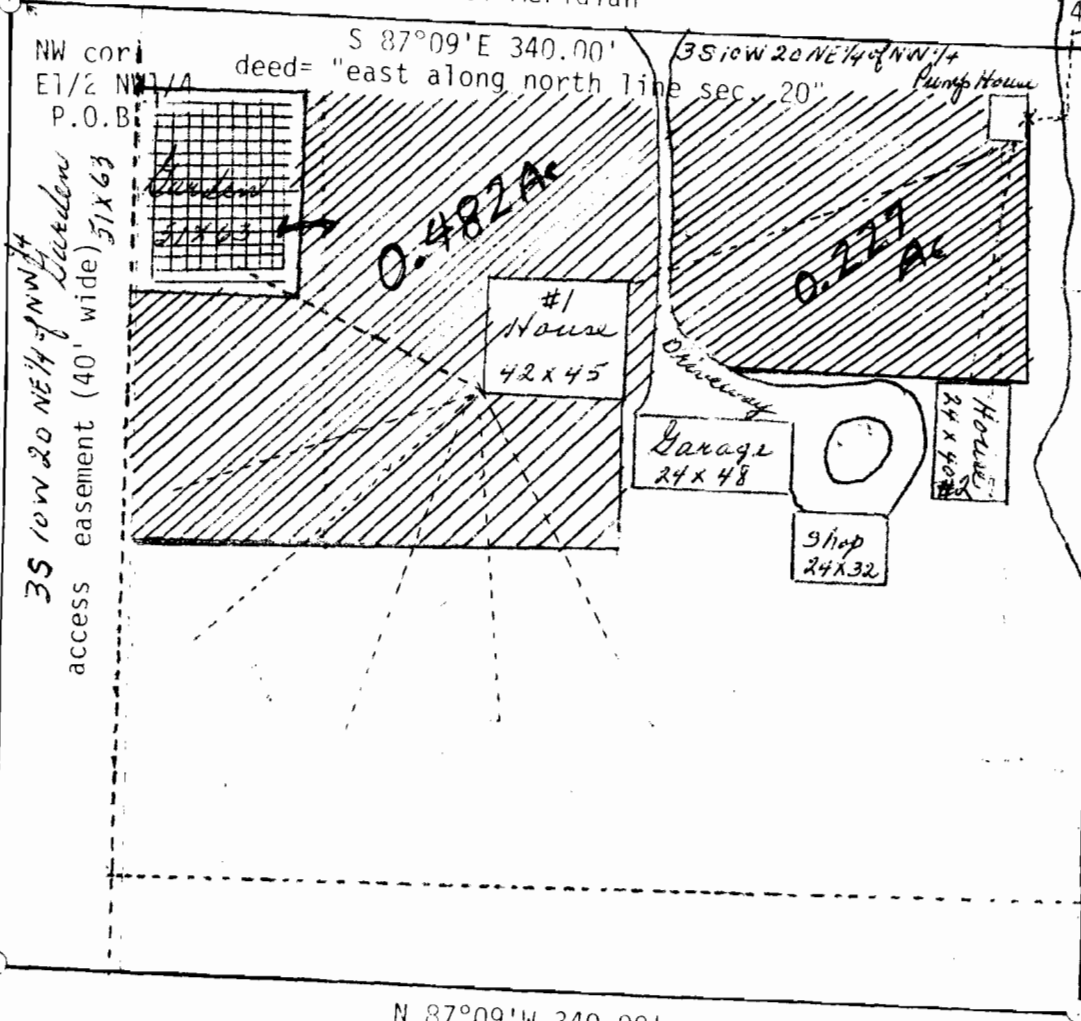
Allan E. Duncan

WATER RESOURCES DEPT
SALEM, OREGON

DEC 11 1980

RECEIVED

deed= north 300' to P.O.B.
[N 1°12'E]
N 1°12'E 300.00'



set 1/2" iron bar
on W. side
of ditch

NW 1/16 (not tied)
position per
map F-40-58

N 87°09' W 340.00'
deed="west 340' to west line E 1/2 NW 1/4"

RECEIVED

SEP 12 1980

WATER RESOURCES DEPT
SALEM, OREGON

S 1°12' W 300.00'
deed= south 300'

set 1/2" iron
bar in apparent
center of 1/4 corner found
County Road C.S. monument

*Corrected
10/10/80
REB
PAB*

*Corrected
12/2/80
REB
PAB*

Allan E. Duncan
4206 Cypress St.
Tillamook, Oregon
97141