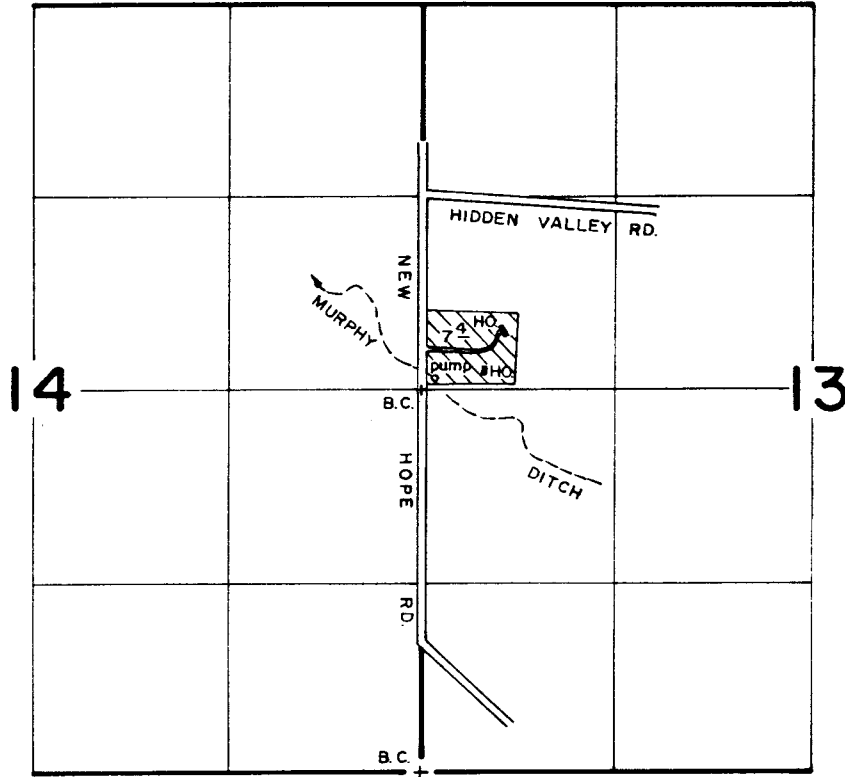


T. 37 S., R. 6 W., W.M.

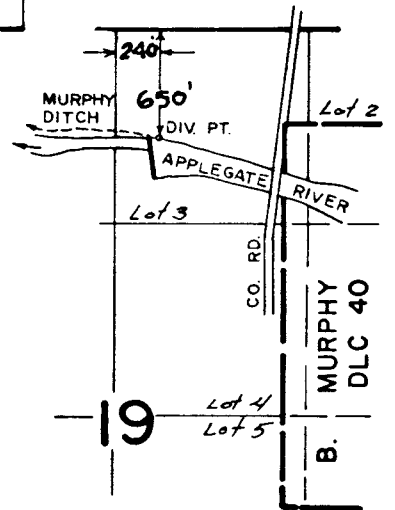


RECEIVED

AUG 24 1989

LAND DIST. 14  
COUNTY REC. OFF.

T. 37 S., R. 5 W., W.M.



**FINAL PROOF SURVEY**  
UNDER

Application No. 61493 Permit No. 45844  
IN NAME OF

LOUIS L. MURPHY & H.E. RAMEY

Surveyed OCT. 4 1983, by B. S. JAMES

SCALE: 4" = 1 MILE

B50-2-4

TWB