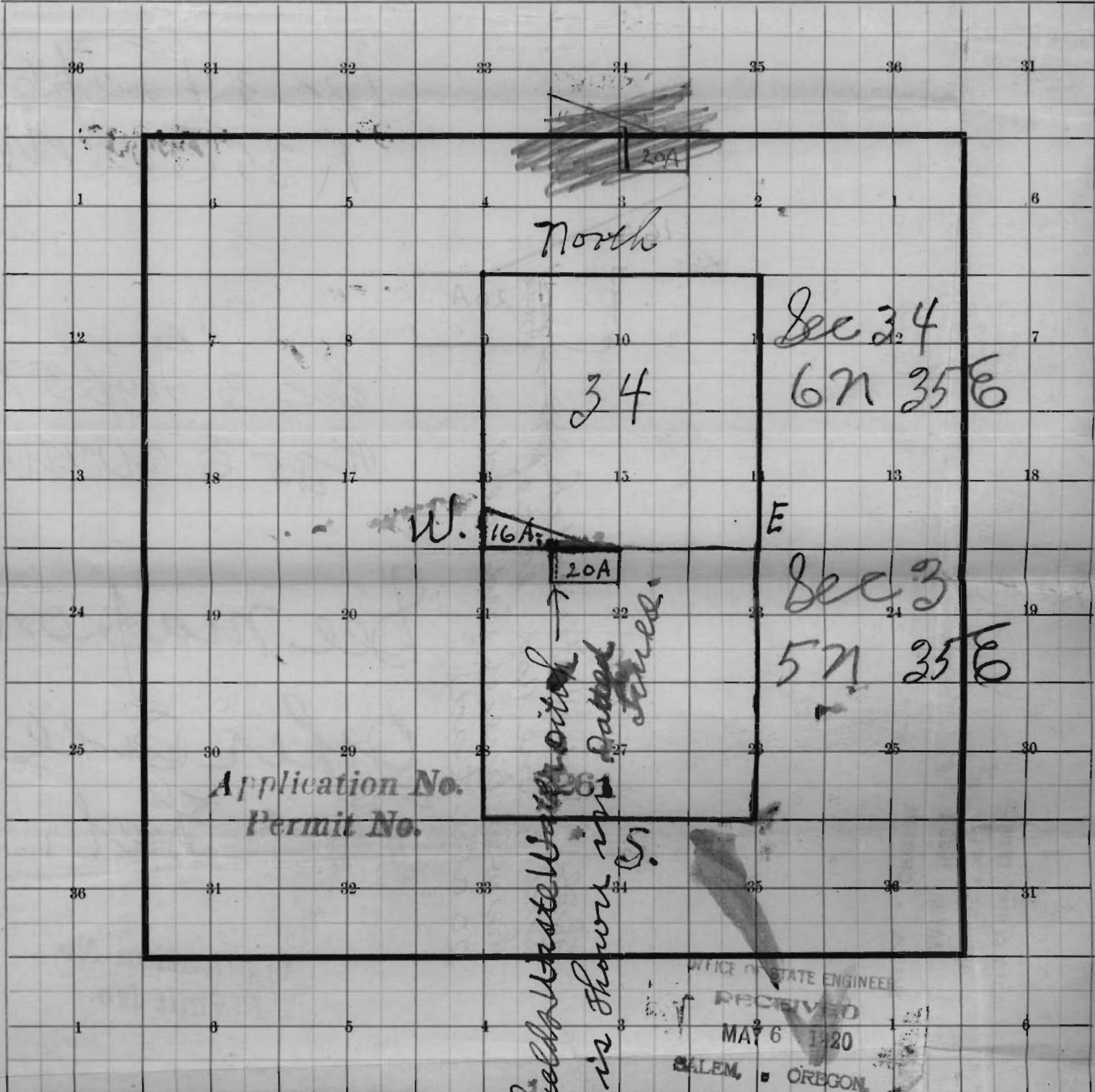


Umatilla Co

or

Township No. 57N & 67N

Range No. 35E. U.M. Mer.



JOHN W. GRAHAM & CO., MANUFACTURING STATIONERS, SPOKANE, IDAHO

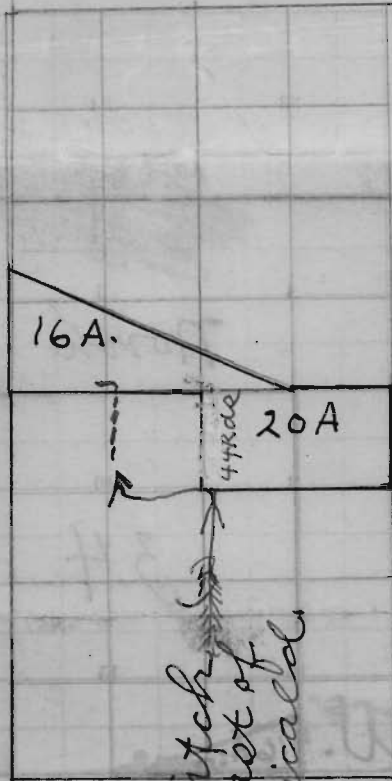
Scale, 80 chains to an inch.

Field Water Ditch
Ditch is shown in dotted lines.

OFFICE OF STATE ENGINEER
RECEIVED
MAY 6 1920
SALEM, OREGON

Application No. 7261
Permit No. 4589

See map on other side



Sec 34 Twp 6N
R 35 E W. M.

Sec 3 Twp 5N
R 35 E. W. M.

Shields Waste Water Ditch
Ditch is one Rod east of
the west line of indicated
20 acre tract

See map on
Other Side
This Sheet.

OFFICE OF STATE ENGINEER
RECEIVED
MAY 6 1920
SALEM, OREGON

Application No.
Permit No.

27