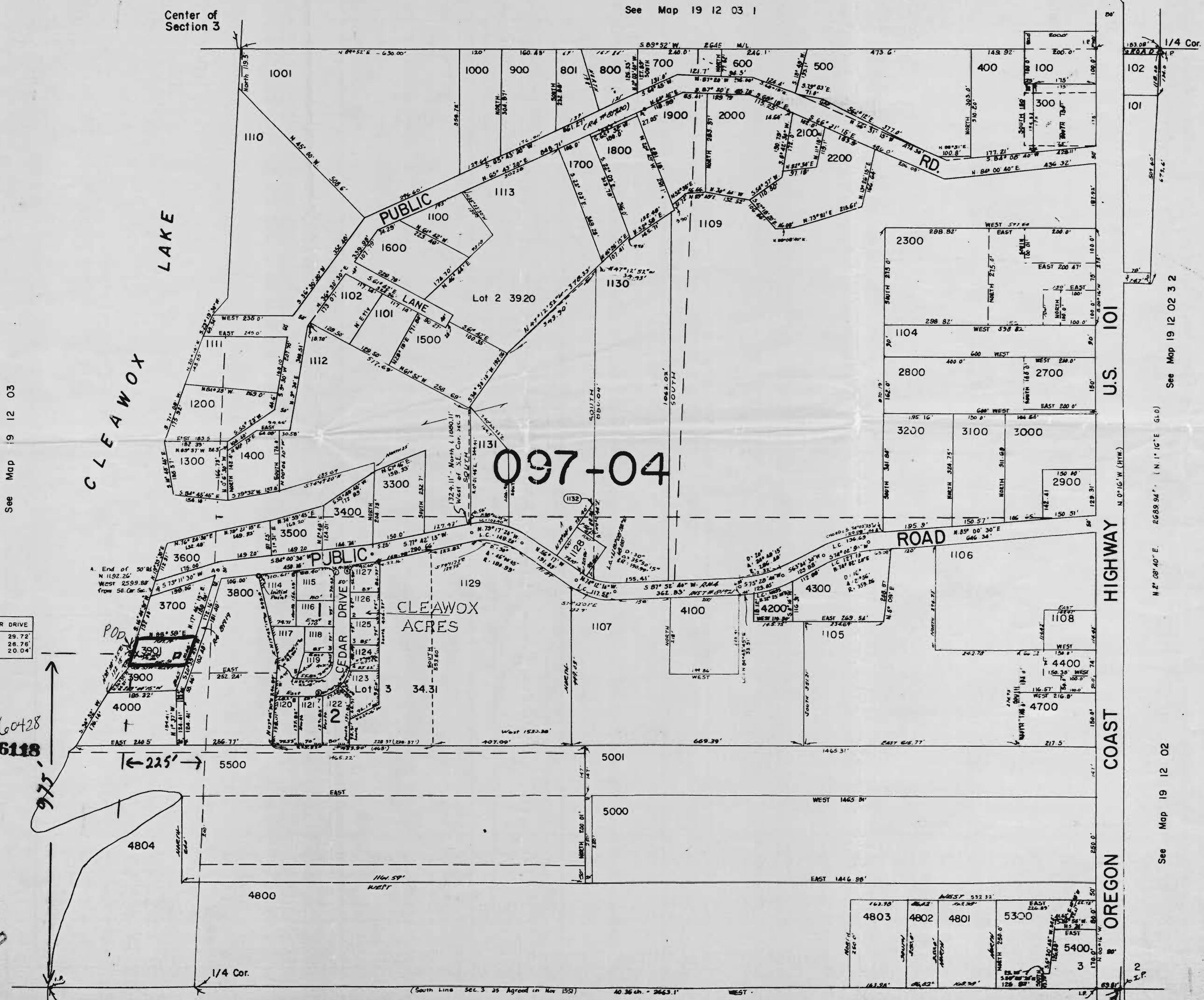


RECEIVED

AUG 25 1981

WATER RESOURCES DEPT
SALEM, OREGON

See Map 19 12 03 1



See Map 19 12 03

See Map 19 12 02 3 2

See Map 19 12 02 3 2

See Map 19 12 02

| CURVE DATA ON CEDAR DRIVE | |
|---------------------------|--------|
| 1. N. 47° 59' 45" W. | 29.72' |
| 2. N. 42° 00' 15" E. | 28.76' |
| 3. N. 84° 15' 30" E. | 20.04' |

Application No. 60428
 Permit No. 46118

RECEIVED
 JUL 30 1980
 WATER RESOURCES DEPT
 SALEM, OREGON

(South Line Sec. 3 as Agreed in Nov 1951) 40.36 ch. - 2663.1' WEST - 2076.0' N.E.L.

RECEIVED
 JUL 30 1980
 WATER RESOURCES DEPT
 SALEM, OREGON