

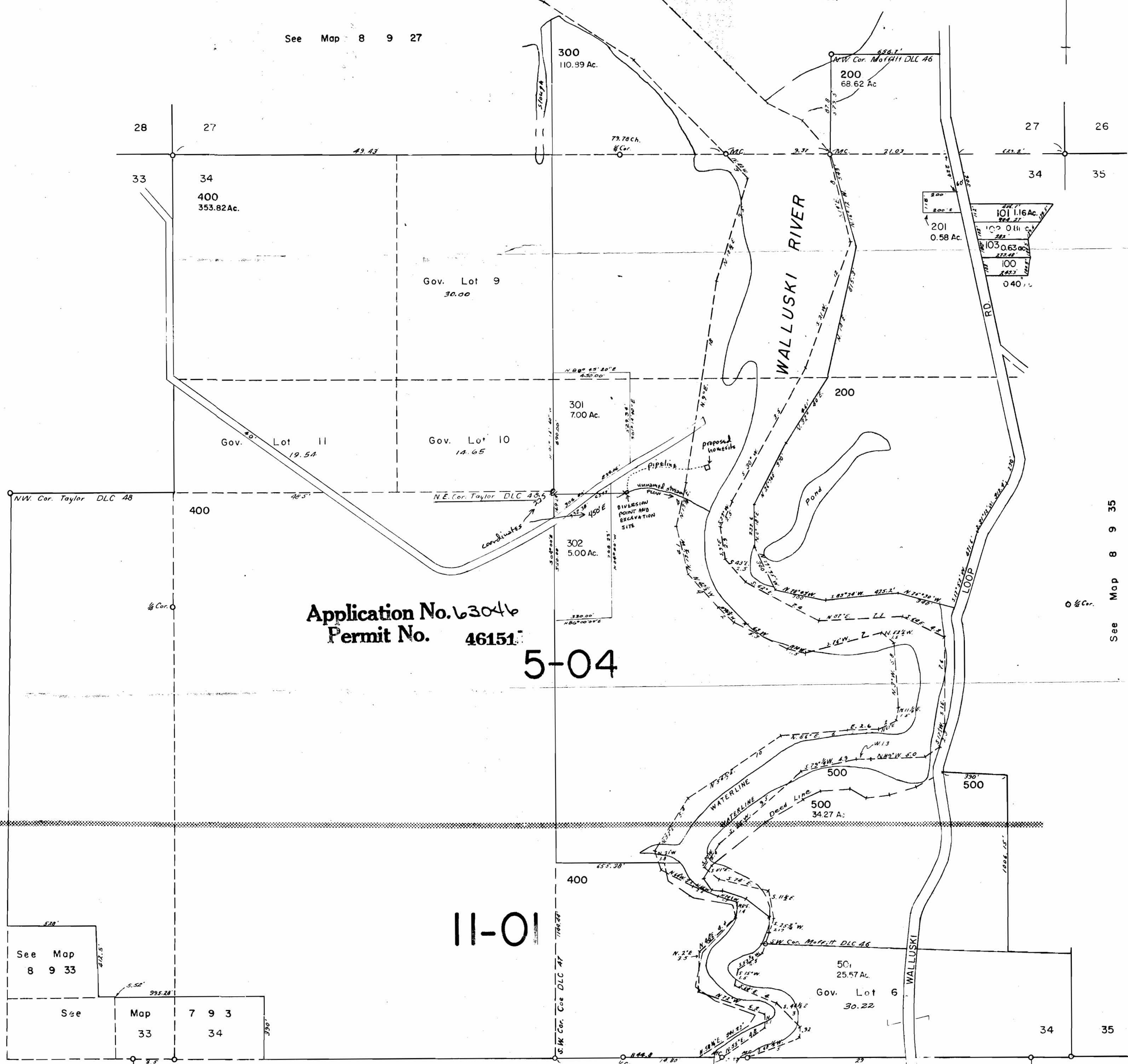
1" = 400'

RECEIVED
NOV 16 1981
WATER RESOURCES DEPT
SALEM, OREGON

See Map 8 9 27

See Map 8 9 33

See Map 8 9 35



Application No. 63046
Permit No. 46151

5-04

11-01

See Map
8 9 33

See Map
7 9 3
33 34

See Map 7 9 3