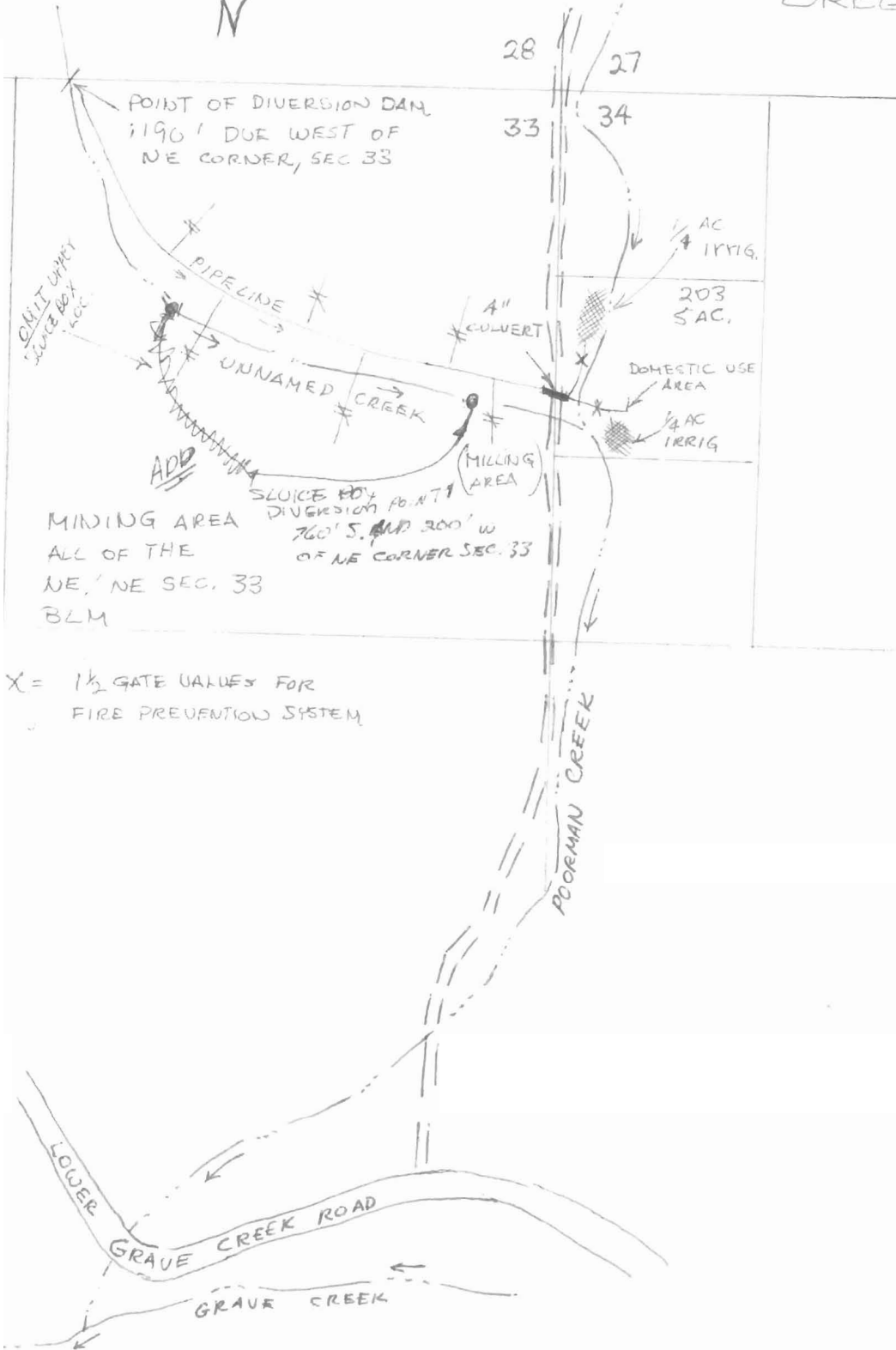


SCALE: 1" = 400'

T 335 R 7W W.M. JOSEPHINE COUNTY,
OREGON



RECEIVED
 MAR 31 1981
 WATER RESOURCES DEPT
 SALEM, OREGON
 JUN 15 1980
 WATER RESOURCES DEPT
 SALEM, OREGON

RECEIVED
 JUN 2 1981
 WATER RESOURCES DEPT
 SALEM, OREGON

RECEIVED
 AUG 27 1981
 WATER RESOURCES DEPT
 SALEM, OREGON

Application No.
 Permit No. 46166