

5400

6642.  
4651

RECORDED  
JUL 17 1919  
CLERK, OREGON

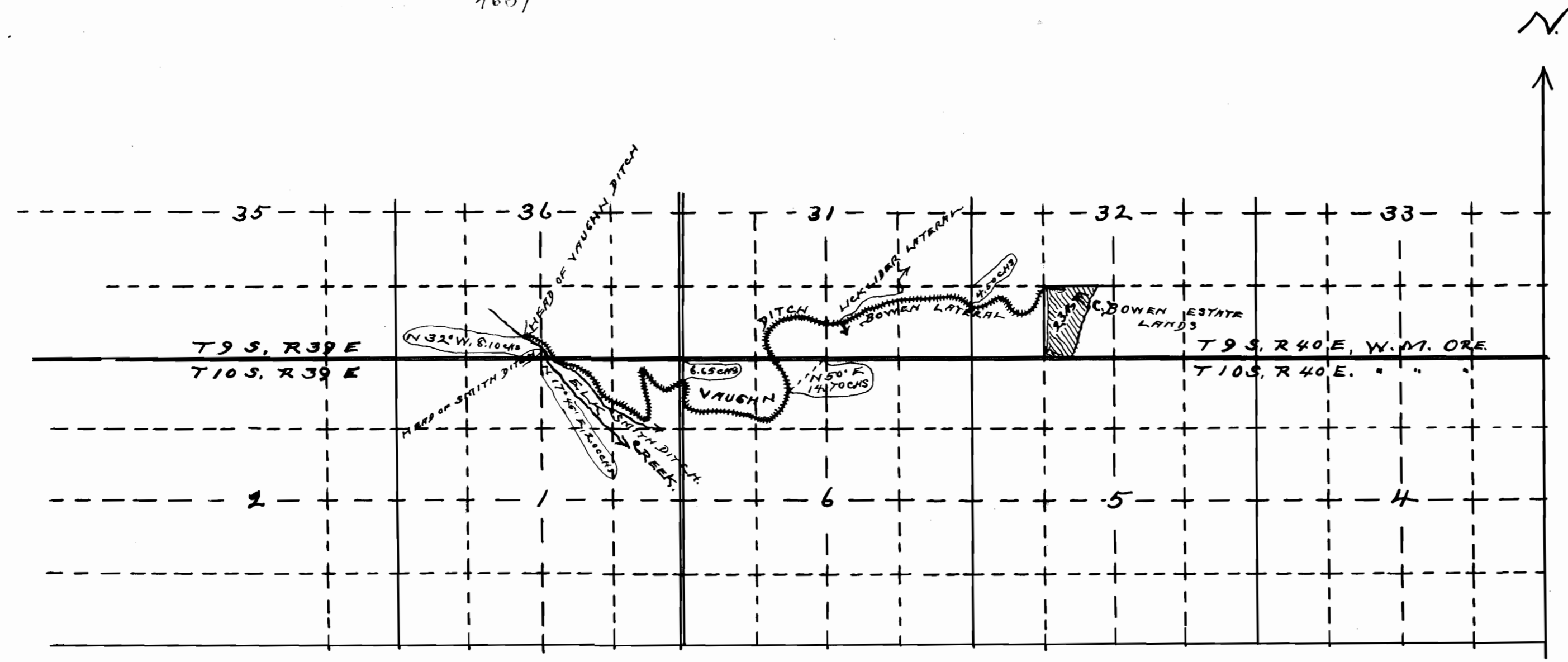
### SKETCH

SHOWING

THE LOCATION OF THE VAUGHN DITCH  
+ THE BOWEN LATERAL OUT-OF-ELK  
CREEK IN SEC. 36, T9 S, R39 E; SEC. 1, T10 S,  
R39 E; SEC. 6, T10 S, R40 E + SECS 31+32,  
T9 S, R40 E, W.M., BAKER CO, OREGON.  
SCALE, ONE INCH = 30.00 CHS.  
SURVEYED, MAY 23, 1919.

Ira L. Hoffman,  
County Surveyor.

5  
t  
e  
e



### CERTIFICATE OF SURVEYOR.

I, IRA L. HOFFMAN, BAKER, ORE. DO HEREBY CERTIFY THAT THIS MAP WAS MADE FROM NOTES TAKEN DURING AN ACTUAL SURVEY MADE BY ME ON MAY 20 + 23, 1919 & THAT IT CORRECTLY REPRESENTS THE DATA SHOWN THEREON, TOGETHER WITH THE STREAMS + OTHER DITCHES IN THE IMMEDIATE VICINITY THEREOF.

Ira L. Hoffman  
County Surveyor.