

AUG 10 1993

WATER RESOURCES DEPT. SALEM, OREGON

Forrest E. Drake  
12-7-81

RECEIVED

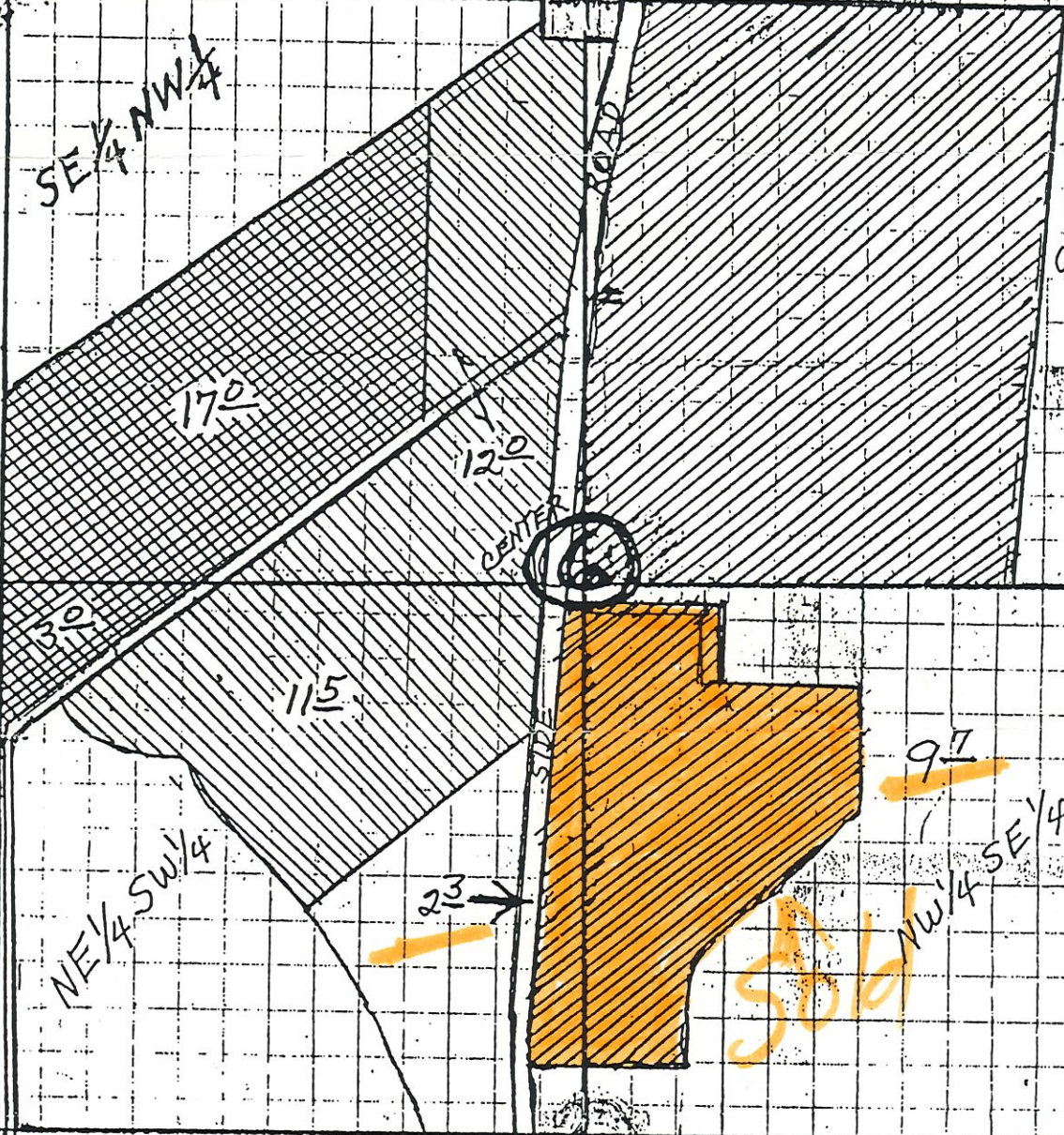
DEC 17 1981

WATER RESOURCES DEPT SALEM, OREGON

TWP. 38 S. R. 4 W. N

NORTH  
1 1/2 400'

MISSOURI FLAT CEMETERY



DIV. PT. IS 860' N. & 1390' E FROM SW COR OF SEC. 6

- Primary from Applegate River & then supplemented from storage in Applegate Lake Reservoir.
- Supplemental from Applegate Lake Res. (Primary = Permit # GR3494)
- Supplemental from Applegate Lake Res. (Primary = permit # 45762)

Application No. 63182  
Permit No. 46663

RECEIVED

APR 1 1982

WATER RESOURCES DEPT. SALEM, OREGON

RECEIVED

MAY 11 1989

WATER RESOURCES DEPT.  
SALEM, OREGON

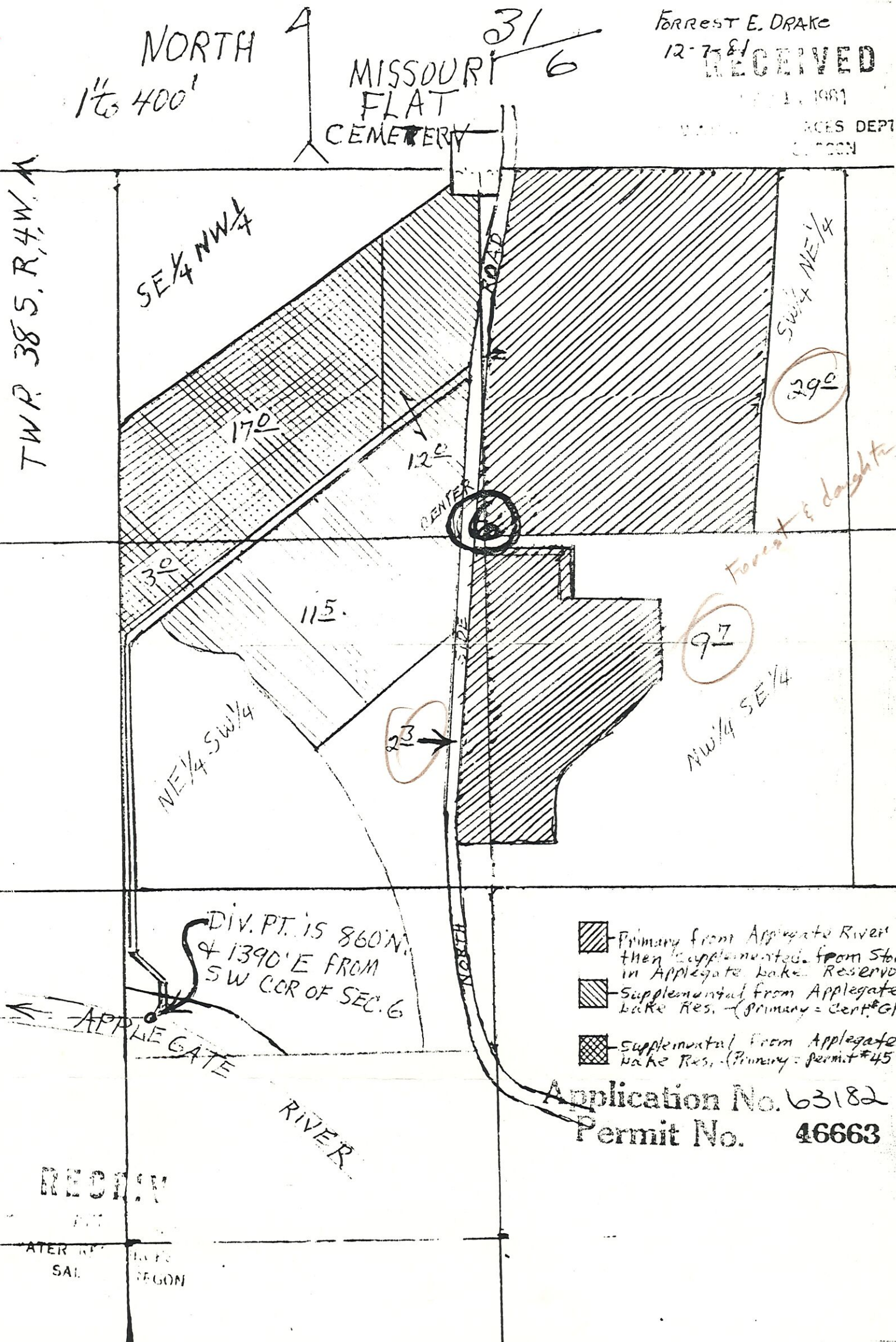
FORREST E. DRAKE




12-7-81

RECEIVED

MAY 11 1989

WATER RESOURCES DEPT.  
SALEM, OREGON



-  Primary from Applegate River & then supplemented from Stor in Applegate Lake Reservoir
-  Supplemental from Applegate Lake Res. (Primary = Cent. GR)
-  Supplemental from Applegate Lake Res. (Primary = permit #457)

Application No. 63182  
Permit No. 46663

RECEIVED

WATER RESOURCES DEPT.  
SALEM, OREGON