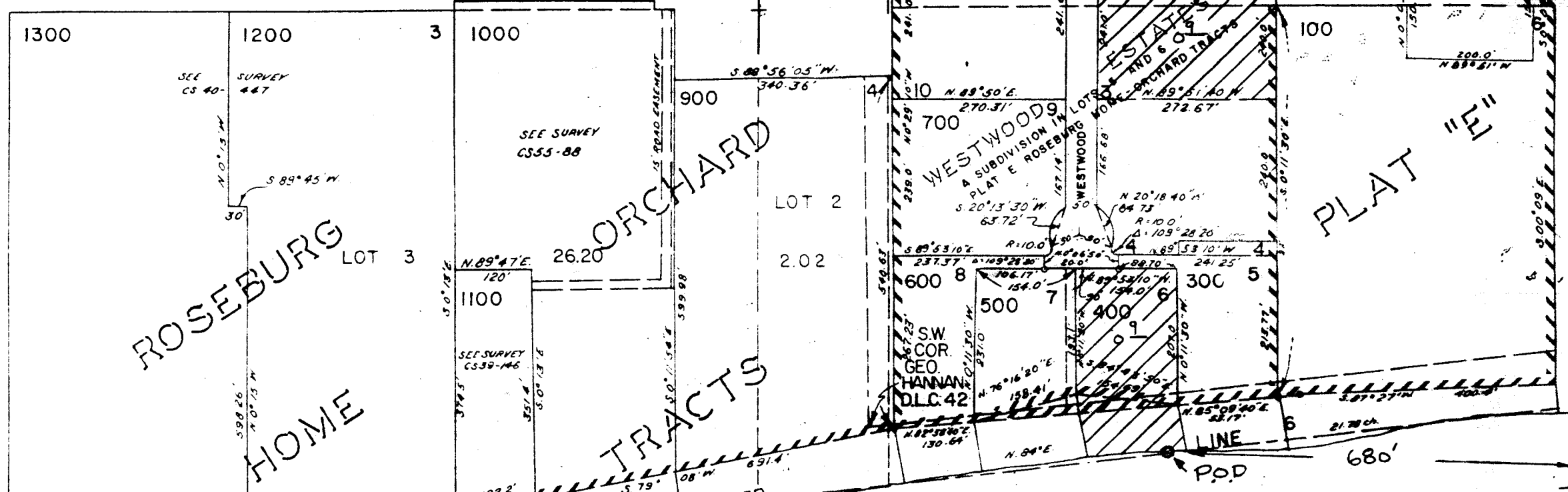


T26S R6W W.M.

33

28  
33  
APPROX.  
CORNER

Cancelled Parcel



ROSEBURG HOME ORCHARD TRACTS

ROSEBURG HOME ORCHARD TRACTS

WESTWOOD 9 A SUBDIVISION IN LOTS 10, 11, 12, 13, 14, 15, 16, 17, 18, 19, 20, 21, 22, 23, 24, 25, 26, 27, 28, 29, 30, 31, 32, 33, 34, 35, 36, 37, 38, 39, 40, 41, 42, 43, 44, 45, 46, 47, 48, 49, 50, 51, 52, 53, 54, 55, 56, 57, 58, 59, 60, 61, 62, 63, 64, 65, 66, 67, 68, 69, 70, 71, 72, 73, 74, 75, 76, 77, 78, 79, 80, 81, 82, 83, 84, 85, 86, 87, 88, 89, 90, 91, 92, 93, 94, 95, 96, 97, 98, 99, 100

PLAT "E"

UMPQUA RIVER

RECEIVED  
MAY 17 1982  
WATER RESOURCES DEPT  
SALEM, OREGON

SCALE 1" = 200'

NORTH

NW 1/4 NW 1/4

NE 1/4 NW 1/4

4-02

Application No. 63546  
Permit No. 46834

6 33A

NW COR 2600  
THOMAS BROWN

D.L.C. NO. 54

N. LINE 3000

2800 4 5 2900

3100 5 3200

3500

6 7

LOT 2  
2.02

1300 1200 3 1000

800 10 200

100

900

700

600

500

400

300

1301

G.L.O.

RIVER

RECEIVED  
MAY 17 1982  
WATER RESOURCES DEPT  
SALEM, OREGON

SCALE 1" = 200'

NORTH

NW 1/4 NW 1/4

NE 1/4 NW 1/4

4-02

Application No. 63546  
Permit No. 46834

6 33A

NW COR 2600  
THOMAS BROWN

D.L.C. NO. 54

N. LINE 3000

2800 4 5 2900

3100 5 3200

3500

6 7