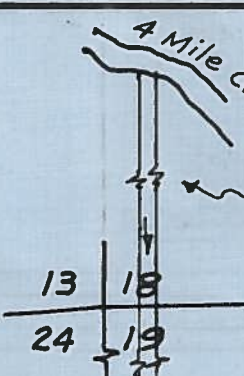
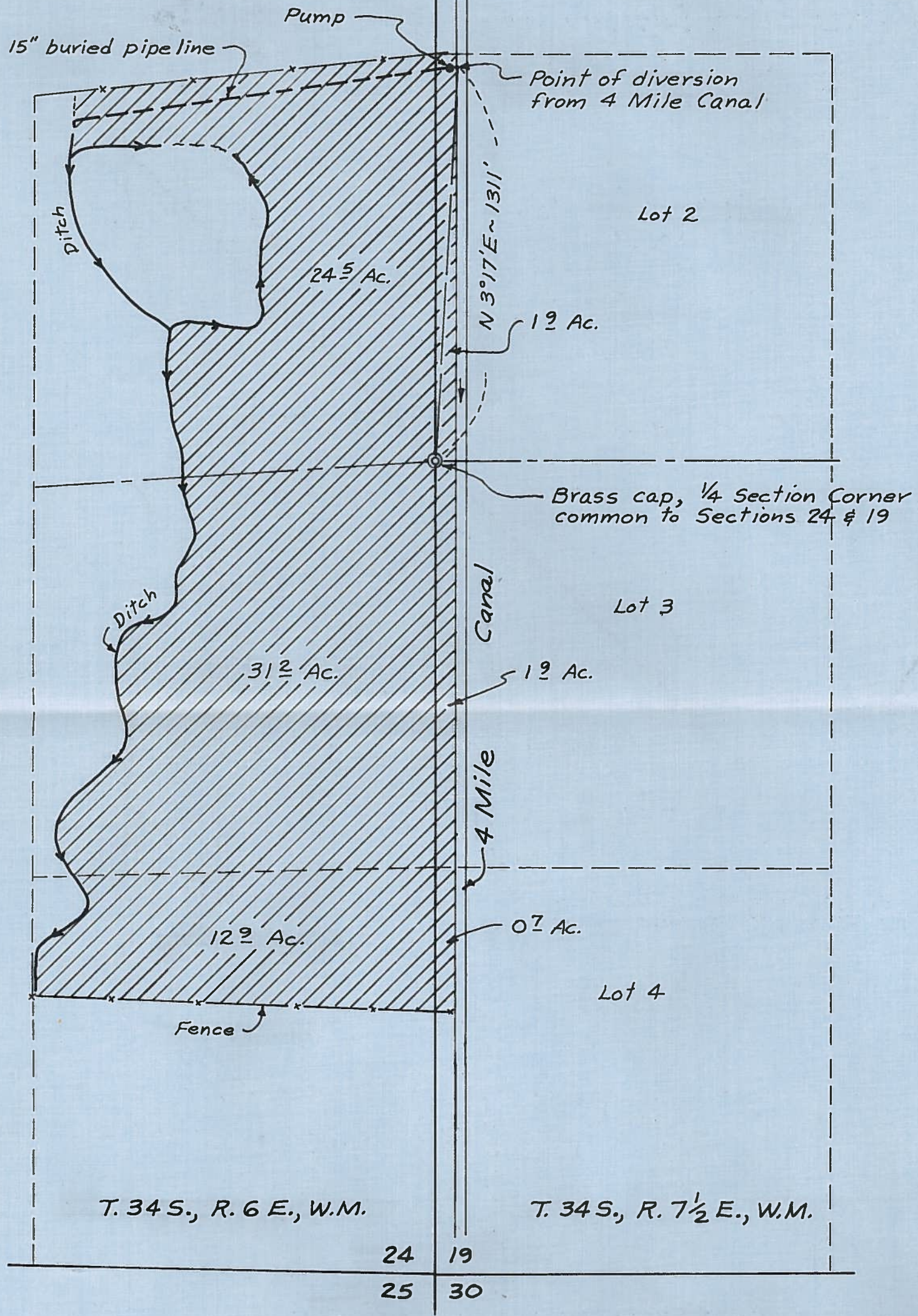


Application No. 62918
 Permit No. 46846



Point of diversion from 4 Mile Creek to 4 Mile Canal is 2050' N. & 30' E. from S.W. Corner Section 18



MAP SHOWING LANDS TO BE IRRIGATED
 BY
MONTGOMERY GILL RANCH CO.
 IN SECTION 24, T. 34 S., R. 6 E., W.M.
 & SECTION 19, T. 34 S., R. 7 1/2 E., W.M.
 KLAMATH COUNTY, OREGON

Scale: 1" = 400'
 Map prepared by: **WILLIAM L. WALES & Associates**
 Consulting Engineers
 1740 Austin Street
 Klamath Falls, Oregon
 September, 1981



RECEIVED
 OCT 1 1981
 WATER RESOURCES DEPT
 SALEM, OREGON