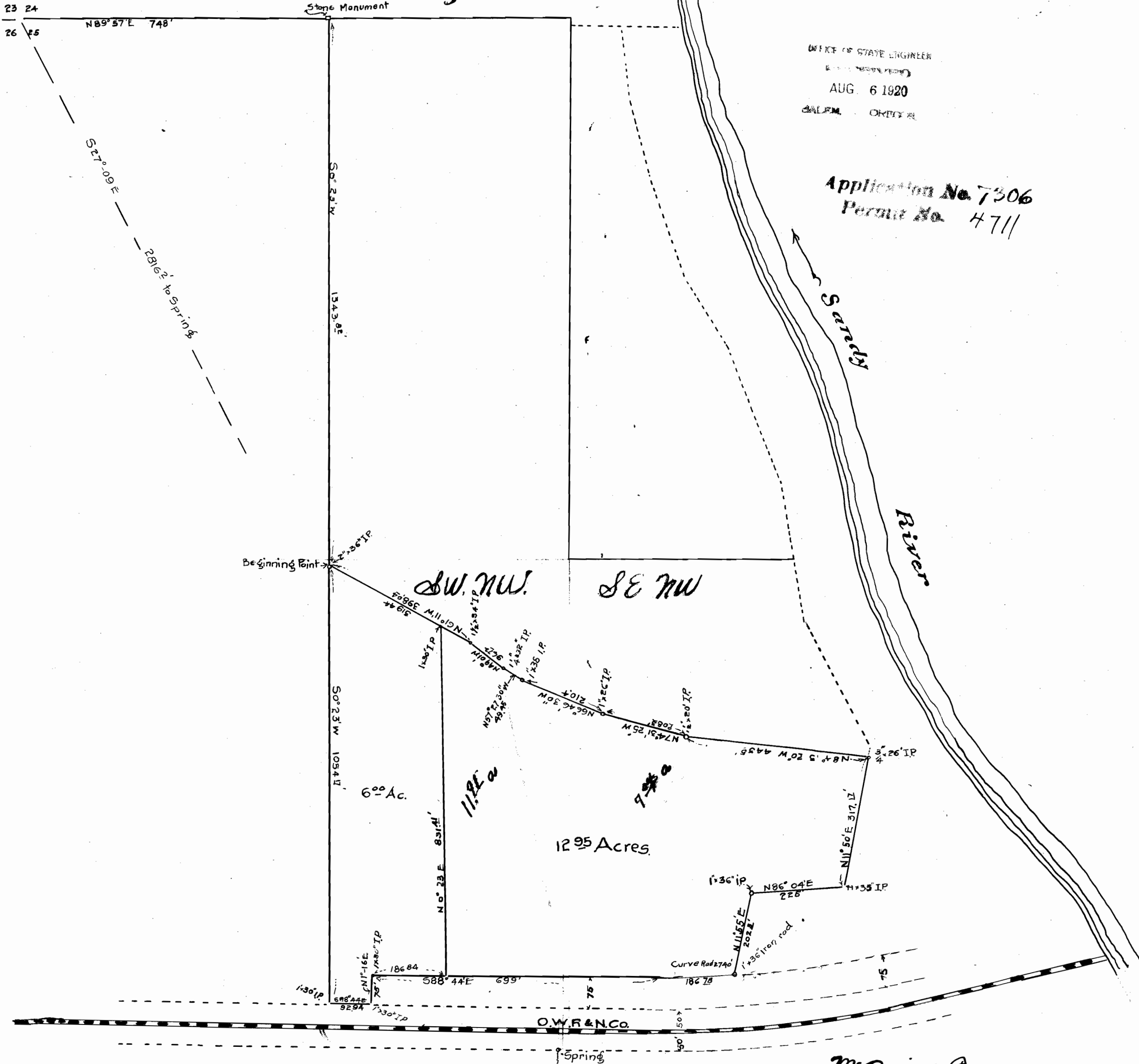


MAP
 OF A PART OF THE D.L.C.
 JOF DE BUXTON &
 SHOWING

PORTION SOLD TO H.C. MCGINNIS ET AL
 in Section 25, T. 1 N. R. 3 E.

Scale 1 in = 200 ft.



OFFICE OF STATE ENGINEER
 AUG. 6 1920
 BALTIM. CITY Md.

Application No. 7306
 Permit No. 4711

McQuinn & Powers
 410 McKay Bldg. Portland, Or.