

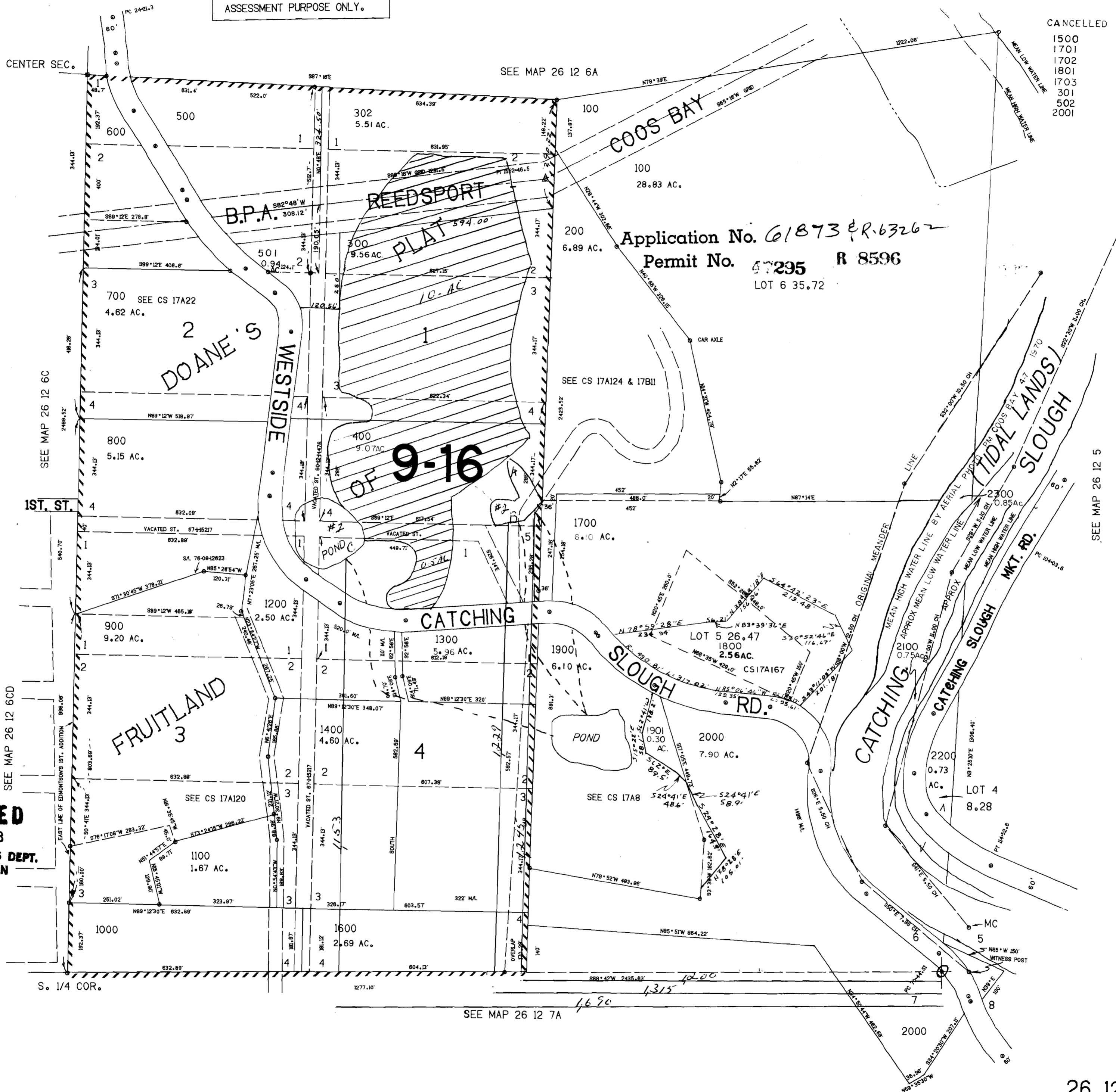
SE1/4 SEC.6 T.26S. R.12W. W.M.  
COOS COUNTY

26 12 6D

1"=200'

THIS MAP WAS PREPARED FOR  
ASSESSMENT PURPOSE ONLY.

CANCELLED  
1500  
1701  
1702  
1801  
1703  
301  
502  
2001



Application No. 61873 & R.6326  
Permit No. 67295 R 8596  
LOT 6 35.72

OF 9-16

RECEIVED  
JAN 21 1983  
WATER RESOURCES DEPT.  
SALEM, OREGON

CONTROL G.H. LAYOUT G.H. TRACED S.J. CHECKED B.B.

SEE MAP 26 12 7A

630,000

26 12 6D

1,026,000