

T30S R15W
NW 1/4 SE 1/4

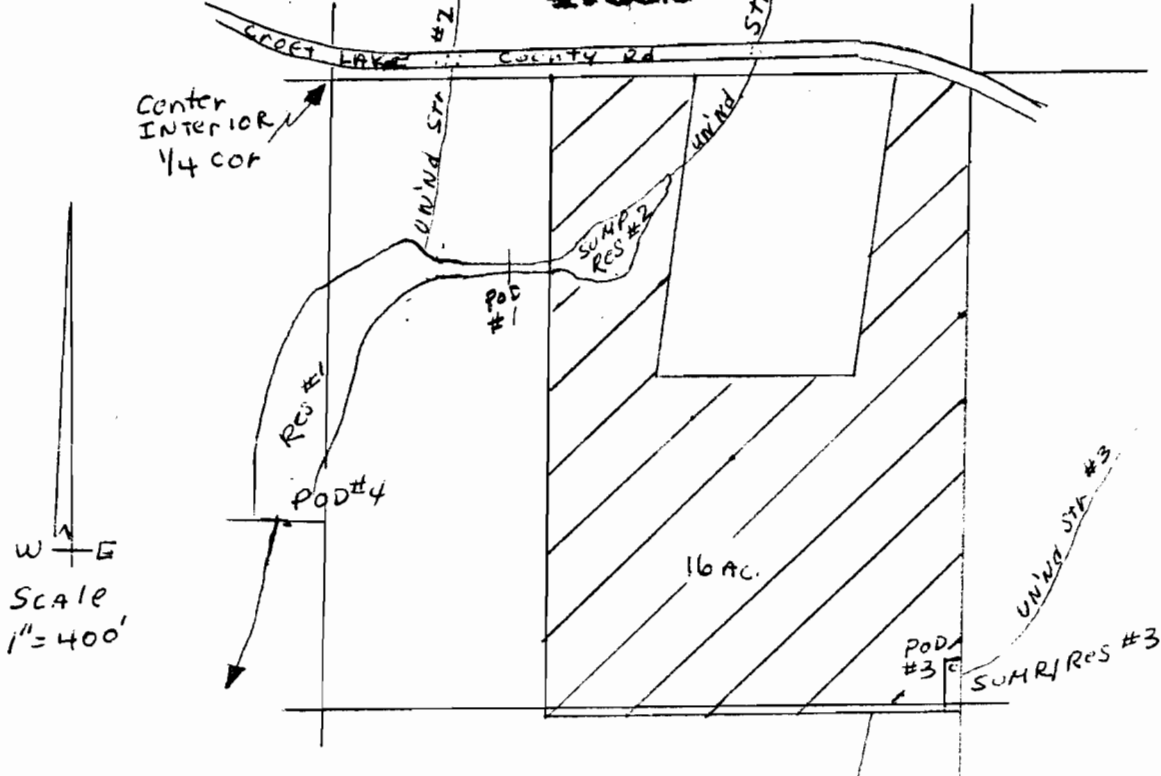
RECEIVED

JUN 25 1982

WATER RESOURCES DEPT
SALEM, OREGON

Application No. R-63735, Sec 11
63744 and G-10769

Permit No. R 8662 47592 G10080



SOURCES:

- POD #1 400'S 380'E FM Interior 1/4 Corner direct flow & stored water
- POD #2 400'S 400'E " " " " " " " " " " " "
- POD #3 1280'S 1300'E " " " " " " " " " " " "
- POD #4 920'S 100'W " " " " " " " " " " " "

USES:

Primary Chanberry Irrigation, temperature Control And Flood Harvest from direct flow, From unind Str #1. Supp irrigation, Supp temperature Control, Supp Flood Harvest From All other Sources.

RECEIVED
DEC 10 1982
WATER RESOURCES DEPT.
SALEM, OREGON

RECEIVED
JUN 25 1982
WATER RESOURCES DEPT
SALEM, OREGON

RECEIVED
OCT 6 1982
WATER RESOURCES DEPT.
SALEM, OREGON

By WAYNE Foster