

SECTION 27 T.1S. R.8W. W.M.
TILLAMOOK COUNTY

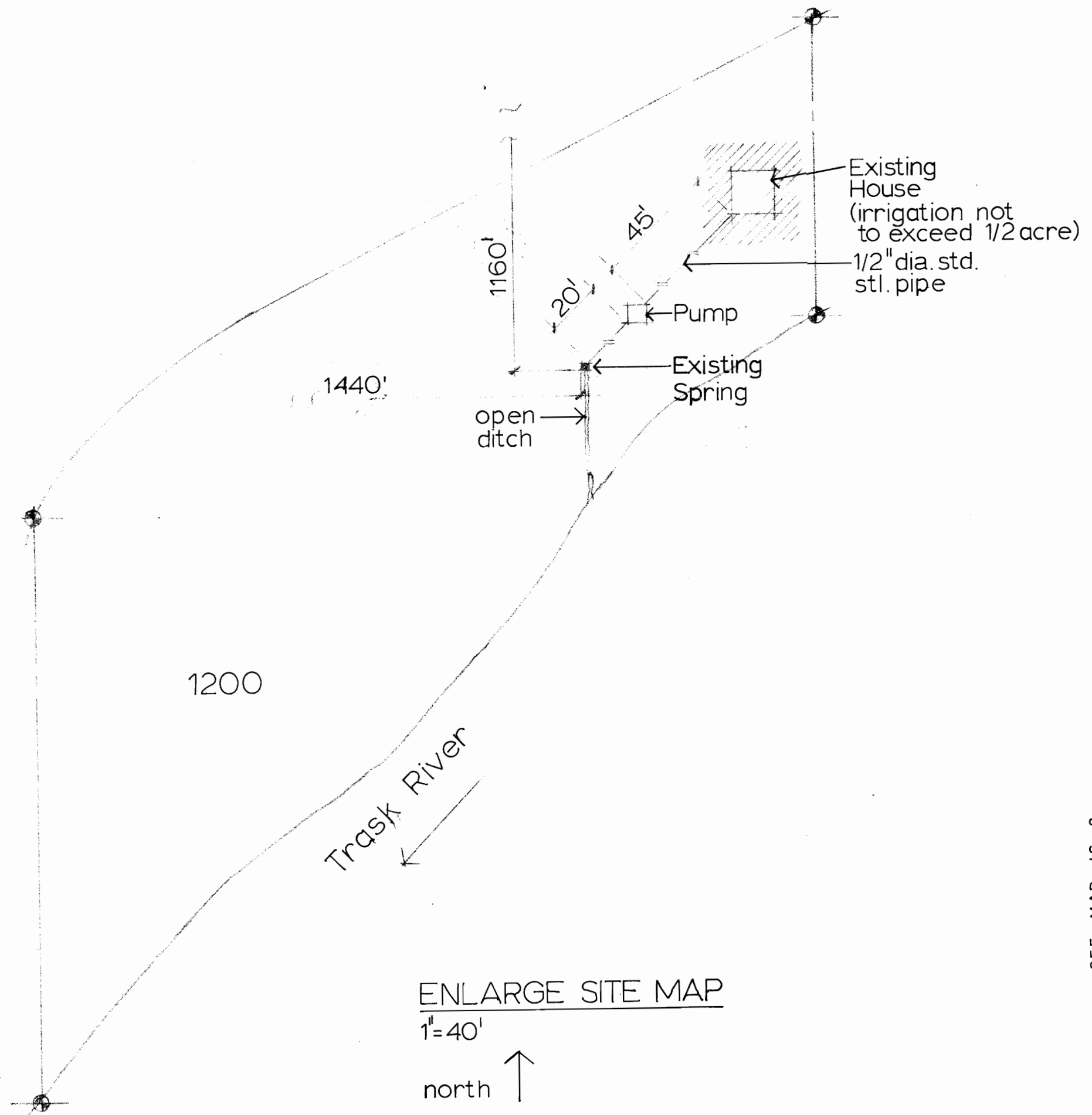
1" = 400'

This map was prepared for
assessment purpose only

N 0° 25' E

N 86° 38' W

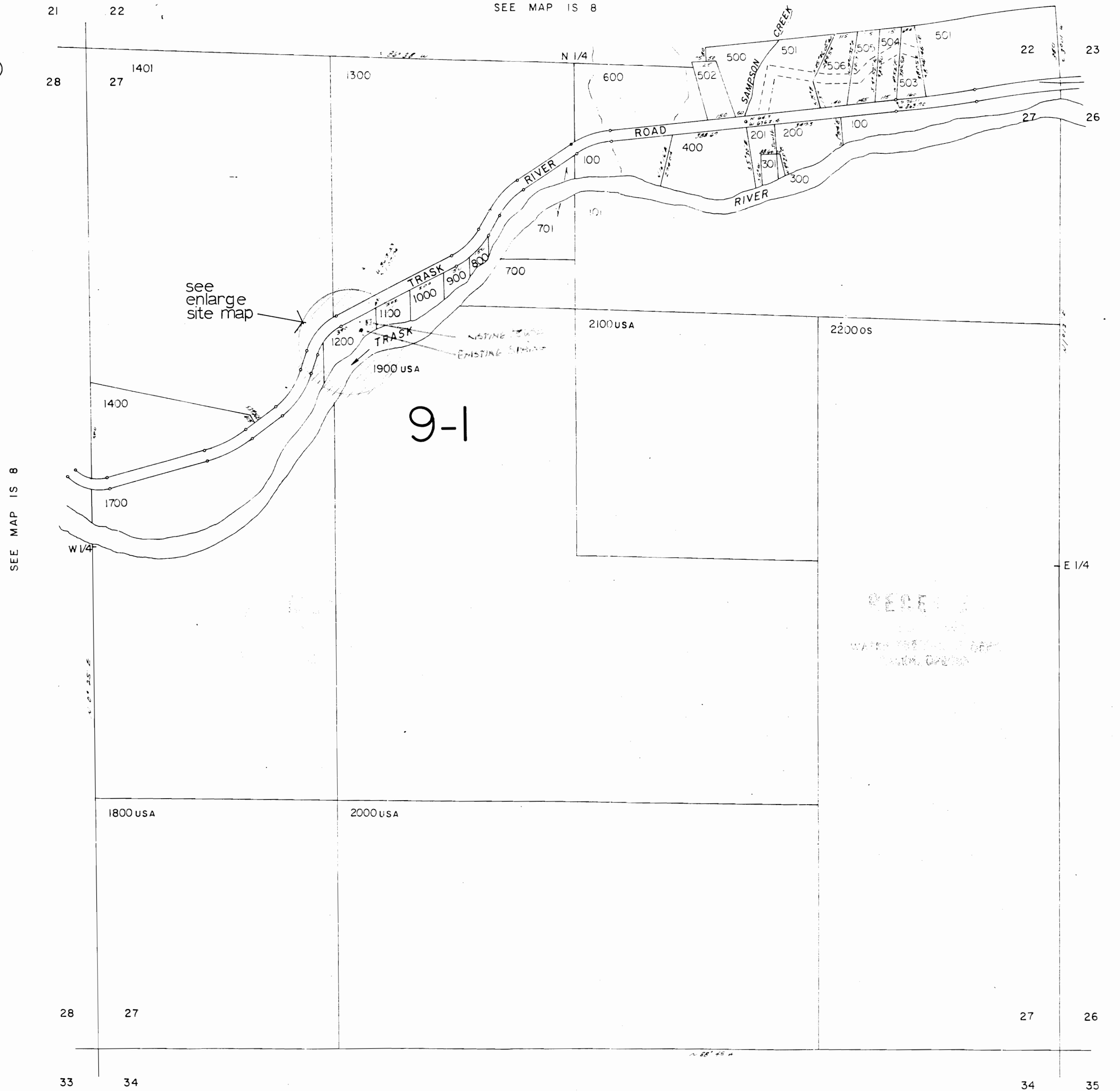
11-21-80



RECEIVED
APR 10 1980
WATER RESOURCES DEPT.
SALMON DIVISION

RECEIVED
MAY 1 1980
WATER RESOURCES DEPT.
SALMON DIVISION

Application No. 64800
Permit No. 47628



SEE MAP IS 8