

RECEIVED

SEP 6 1983

WATER RESOURCES DEPT.
SALEM, OREGON

RECEIVED

FEB 14 1983

WATER RESOURCES DEPT.
SALEM, OREGON

RECEIVED

NOV 19 1982

WATER RESOURCES DEPT.
SALEM, OREGON

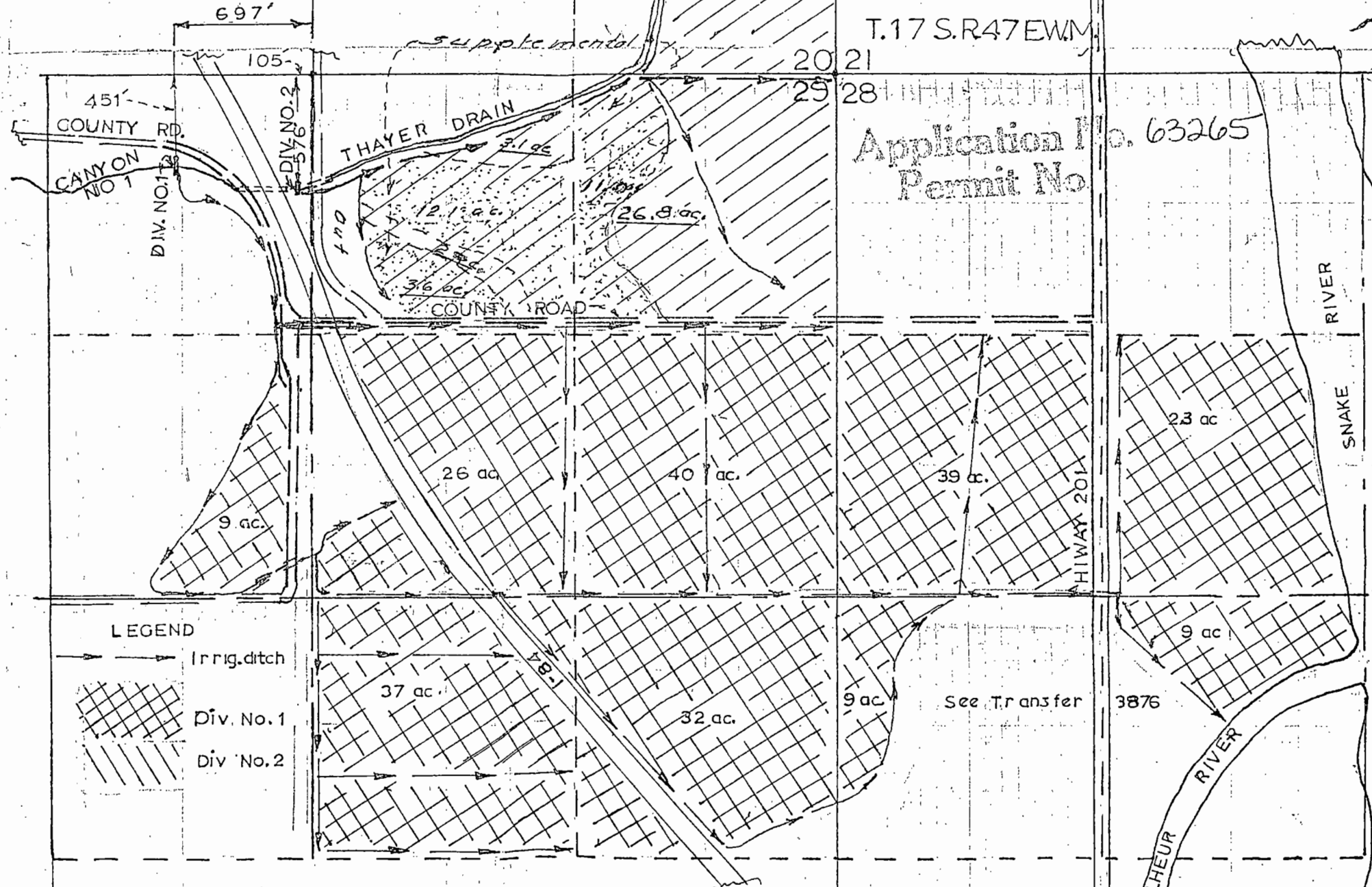
RECEIVED

FEB 15 1982

WATER RESOURCES DEPT.
SALEM, OREGON

T.17 S.R.47 E.W.M.

Application No. 63265
Permit No



RECEIVED

SEP 6 1983

WATER RESOURCES DEPT.
SALEM, OREGON

SEE MAP

17 47 21

Compliments of
LAND TITLE INSURANCE AGENCY
This sketch is furnished
to assist in property location
and the company does not
guarantee its accuracy

WATER RESOURCES DEPT.
SALEM, OREGON

RECEIVED

FEB 14 1983

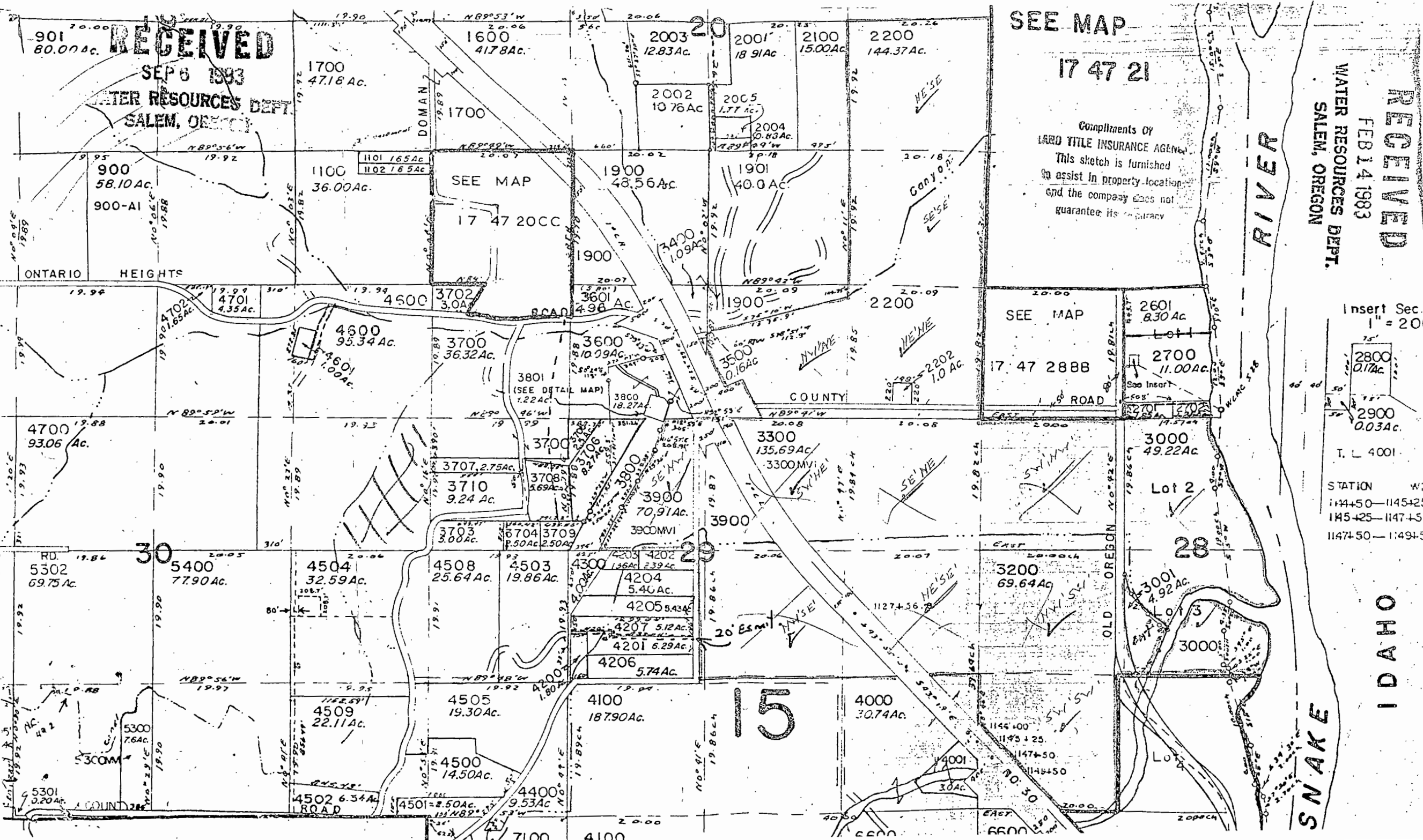
Insert Sec.
1" = 20'

2800
0.17Ac
2900
0.03Ac

T. L 4001

STATION WIC
1144+50—1145+25
1145+25—1147+50
1147+50—1149+50

OHAWI



SNAKE RIVER