

**RECEIVED**

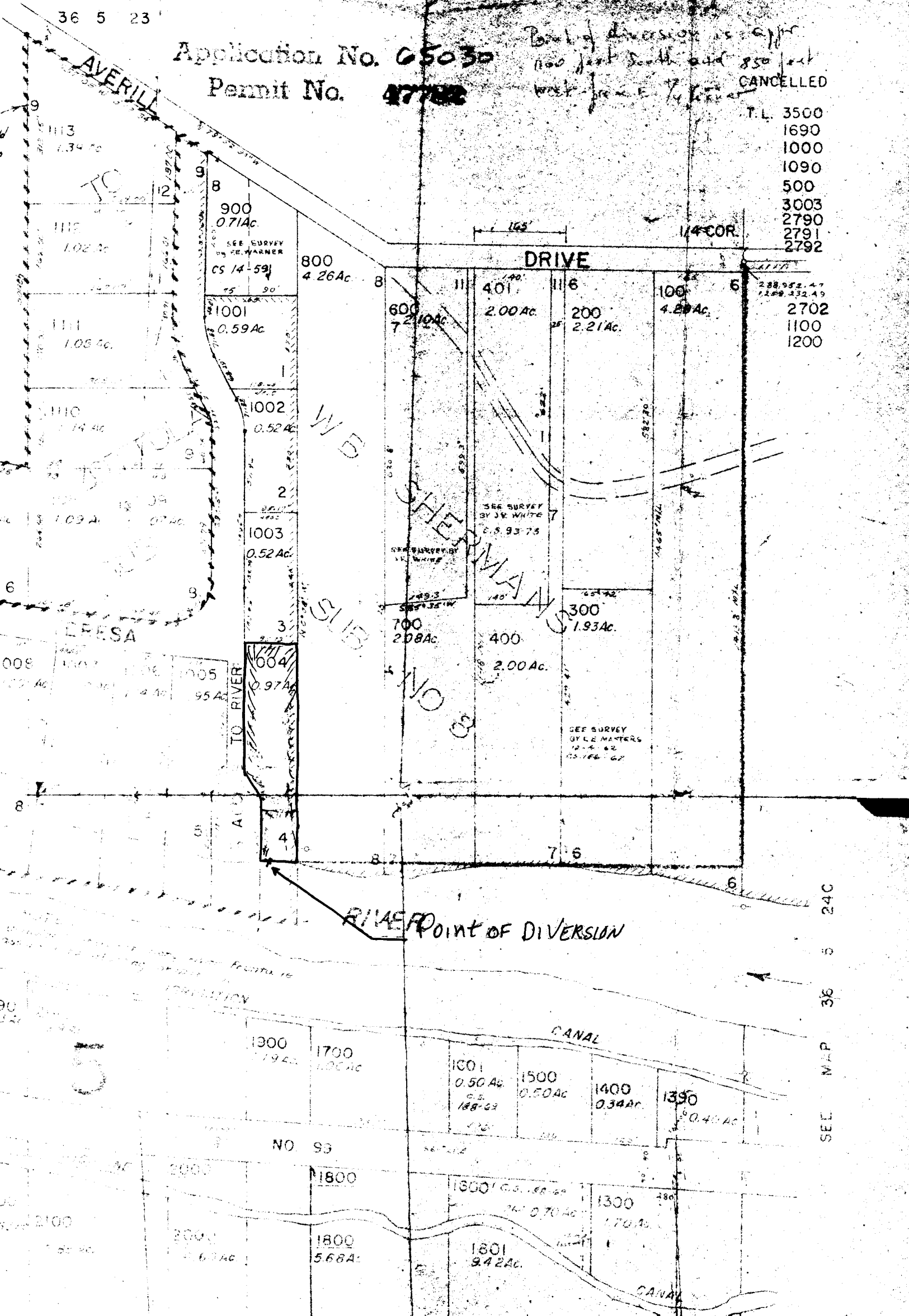
JUL 25 1983

WATER RESOURCES DEPT.  
SALEM, OREGON

Application No. **05030**  
Permit No. **47782**

Bank of diversion as app.  
100 feet South and 850 feet  
West from E. 1/4 corner  
**CANCELLED**

T.L. 3500  
1690  
1000  
1090  
500  
3003  
2790  
2791  
2792



SEE MAP 36 5 24C

RECEIVED

JUL 3 1988  
WATER RESOURCES DEPT.  
ELEM. OREGON

SE 1/4 SEC 23 T36S

JOSEPHINE CO

1" = 200'

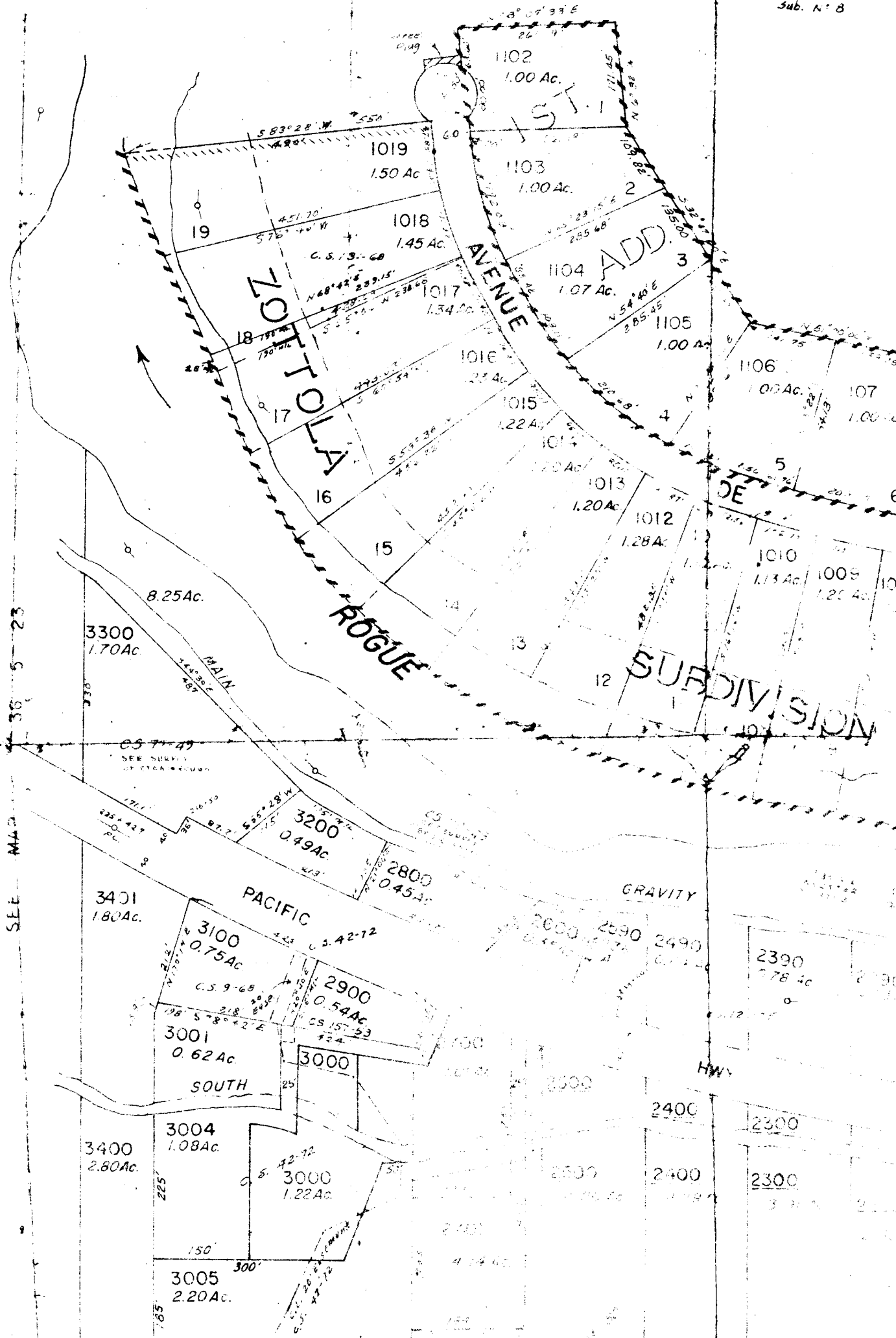
RECEIVED

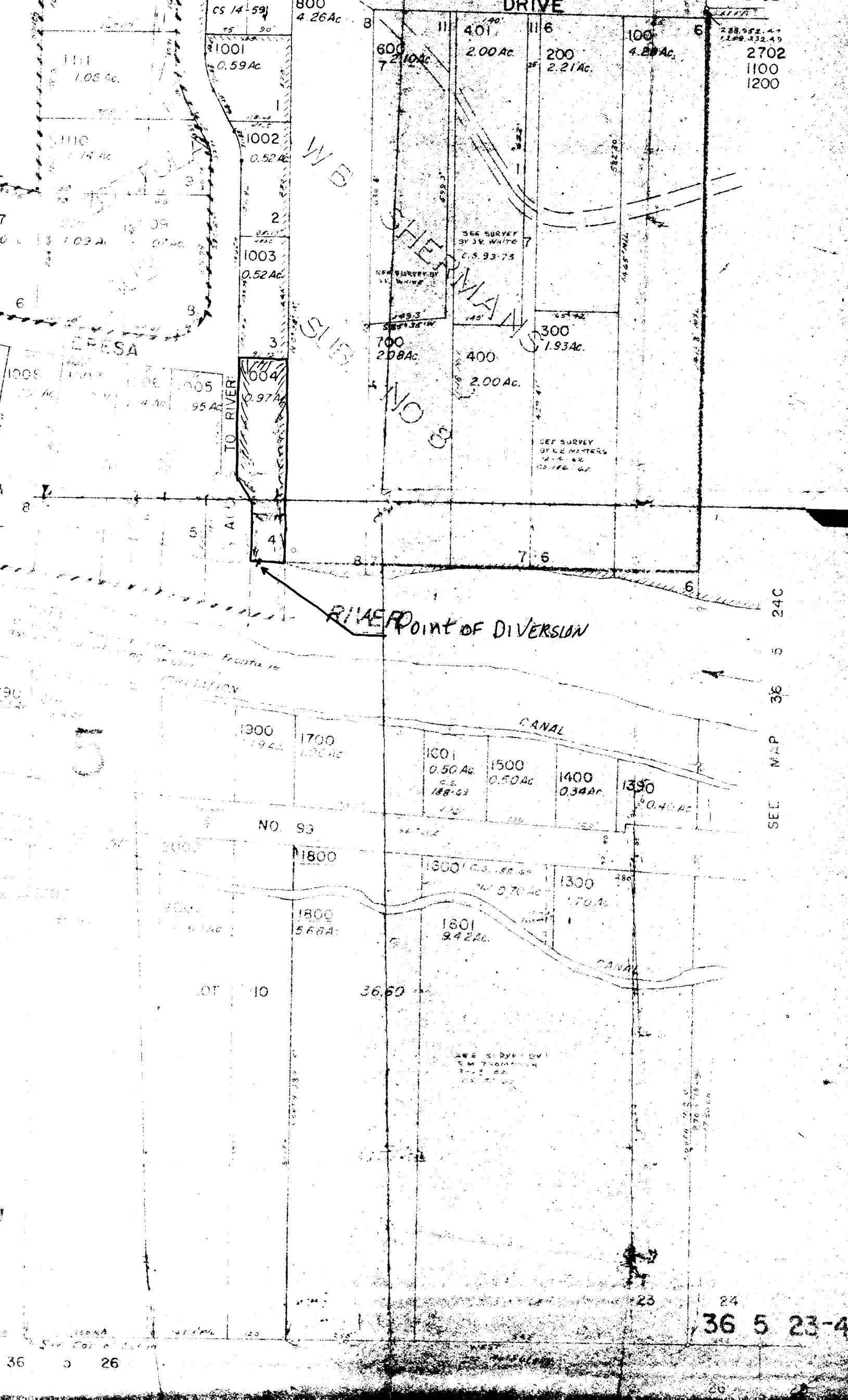
JUN 24 1988  
WATER RESOURCES DEPT.  
ELEM. OREGON

SEE MAP

NOTE:

Lot 9 of Old  
WB Snermans  
Sub. No. 8





288,552.47  
1,100,232.49  
2702  
1100  
1200

W.B. SHERMAN  
SLIB  
NO. 93

SEE SURVEY BY J.R. WHITE  
C.S. 93-73

SEE SURVEY BY J.R. WHITE

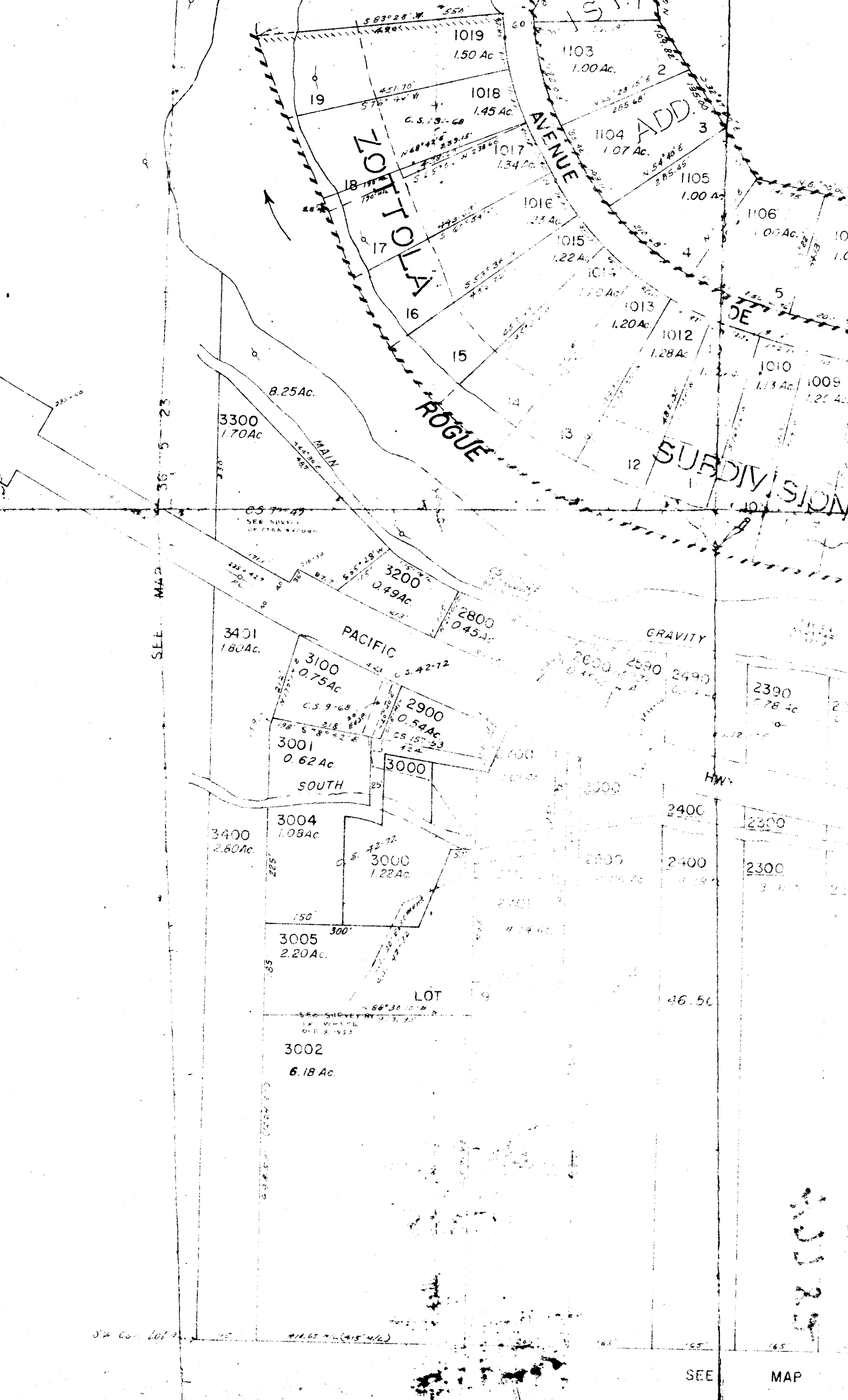
SEE SURVEY OF L.E. MASTERS  
12-4-42  
CS 186-62

RIVER POINT OF DIVERSION

SEE MAP 36 5 24C

36 5 23-4

36 5 26



SW COR. LOT 1

SEE MAP

110325