

Application No. 7550  
 4803

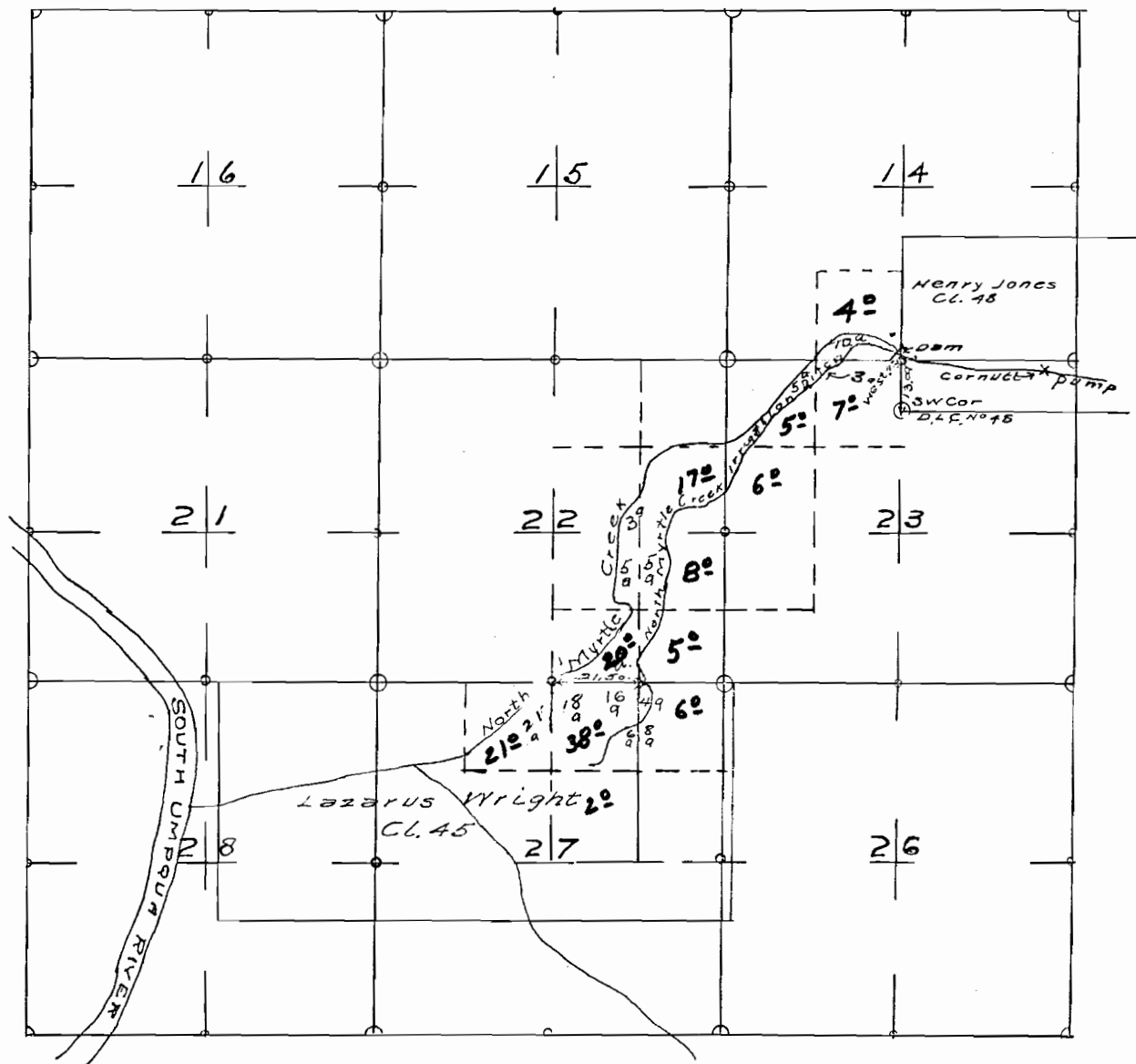


**NORTH MYRTLE CREEK IRRIGATION DITCH  
 LOCATED IN  
 SECTIONS, 14, 22, 23 and 27 TOWNSHIP 29 S. R 5 W.  
 DOUGLAS COUNTY, OREGON.**

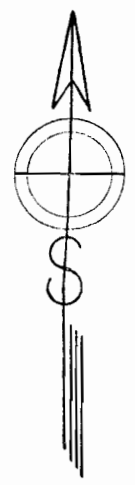
**CERTIFICATE OF SURVEYOR**  
 Frank Cain of Riddle do hereby certify that this map was made from notes taken by me on Sep 20 1920 and that it correctly represents the works described in the accompanying application together with the location of streams and other ditches in the immediate vicinity.

Frank Cain  
 Surveyor

SCALE  
 40 CHAINS TO 1 INCH



App. No. 7550  
 4803



NORTH MYRTLE CREEK IRRIGATION DITCH  
 LOCATED IN  
 SECTIONS, 14, 22, 23 and 27 TOWNSHIP 29 S. R 5 W.  
 DOUGLAS COUNTY, OREGON.

CERTIFICATE OF SURVEYOR

Frank Cain of Riddle do hereby certify that this map was made from notes taken by me on Sep 20 1920 and that it correctly represents the works described in the accompanying application together with the location of streams and other ditches in the immediate vicinity.

Frank Cain  
 Surveyor

SCALE  
 40 CHAINS TO 1 INCH