

**RECEIVED**

OCT 5 1983

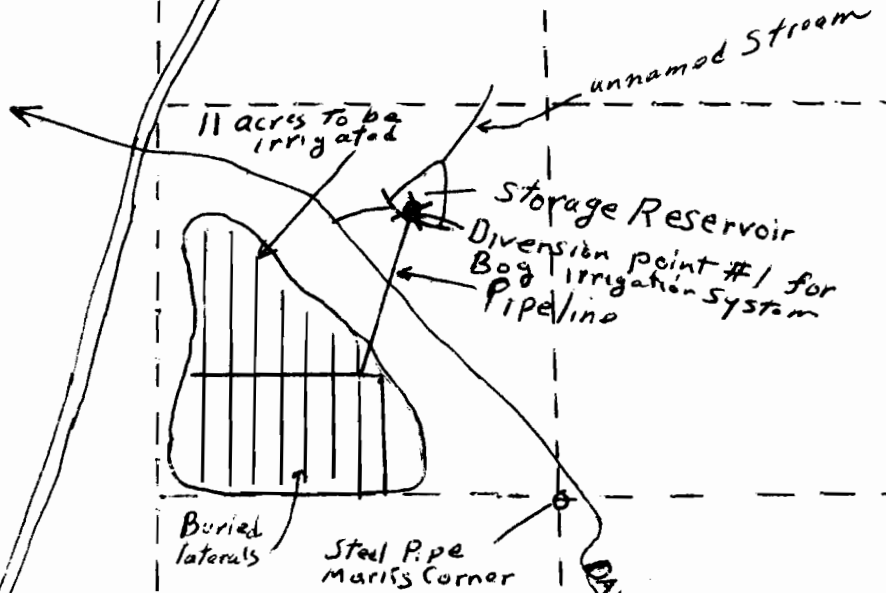
WATER RESOURCES DEPT.  
SALEM, OREGON

Twp 30S, R 15 W.W.M. SEC. 13

R-67353\$  
**Application No.** 67350  
**Permit No.** R 9270  
48192



Diversion Point #1  
located 1072 ft N and  
495 ft W from the  
SW Corner of NW 1/4 SE 1/4  
Sect. 13 Twp. 30S R. 15 W.W.M.  
in Coos County.



**RECEIVED**

JAN 3 1984

WATER RESOURCES DEPT.  
SALEM, OREGON

Highway 101

DAVIS CREEK

Lynn E. & Rose M. Cannon  
886 N. Dean St.  
Coquille, OR 97423

Scale 1" = 660'