

SECTION 14 T2N R4W W.M.

WASHINGTON COUNTY OREGON

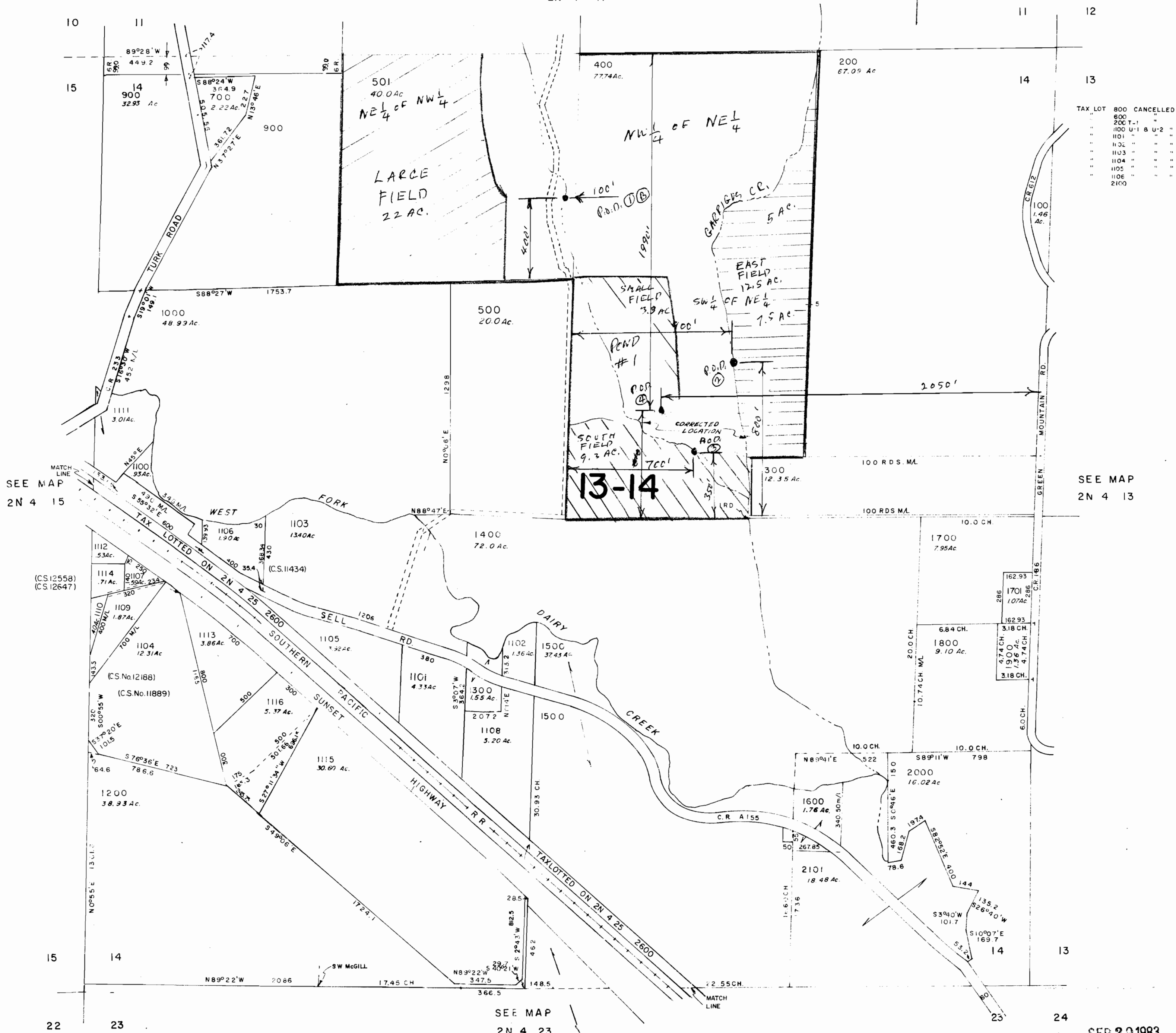
SCALE 1"=400'

OCT 4 1983  
WARRANTY DEPOSIT  
STATE OF

FIELD	IRRIG. FROM:
LARGE FIELD S. HALF	P.O.D. ① ⑤
EAST FIELD	P.O.D. ②
SOUTH FIELD	P.O.D. ③
SMALL FIELD	P.O.D. ④

Application No. 64595 & R-67689  
Permit No. 48331 R 9602

SEE MAP  
2N 4 11



TAX LOT 800 CANCELLED

800	CANCELLED
801	"
802	"
803	"
804	"
805	"
806	"
807	"
808	"
809	"
810	"
811	"
812	"
813	"
814	"
815	"
816	"
817	"
818	"
819	"
820	"

SEE MAP  
2N 4 15

SEE MAP  
2N 4 13

SEE MAP  
2N 4 23

SEP 29 1983