

The sketch below is made solely for the purpose of assisting in locating said premises and the Company assumes no liability for variations, if any, in dimensions and location ascertained by actual survey.

Pioneer National Title Insurance Company
Title and Trust Division

RECEIVED

SEP 20 1983

WATER RESOURCES DEPT.

See Map 22 28 14



22 23

RECEIVED

OCT 3 1983

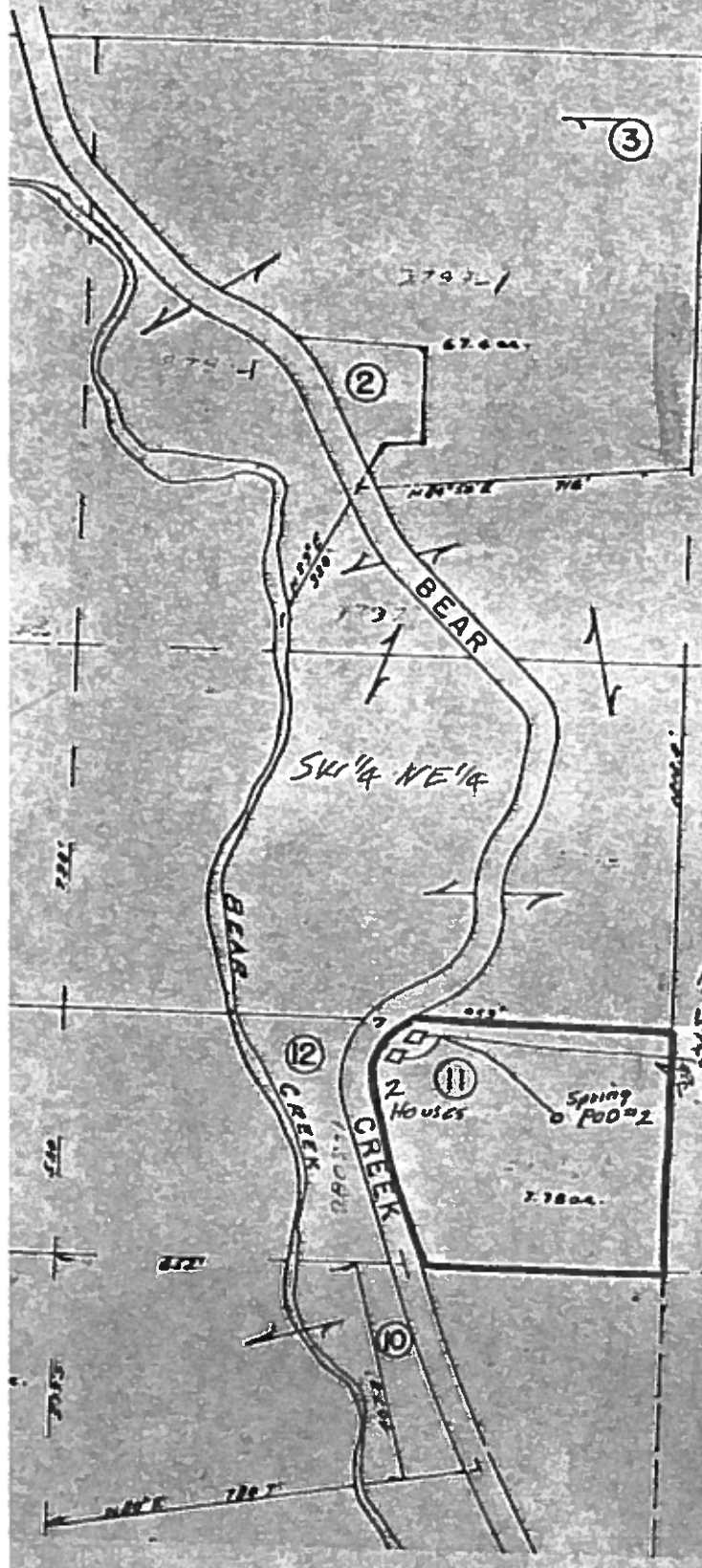
WATER RESOURCES DEPT.
SALEM, OREGON

27 26

67336

Application No.

Permit No. 48406



⑨

1245' W
1565 W

50812
2180'S
2305'

T 28 S R 14 S Sec 27

Scale 1" = 400'

See Map 26 28 14