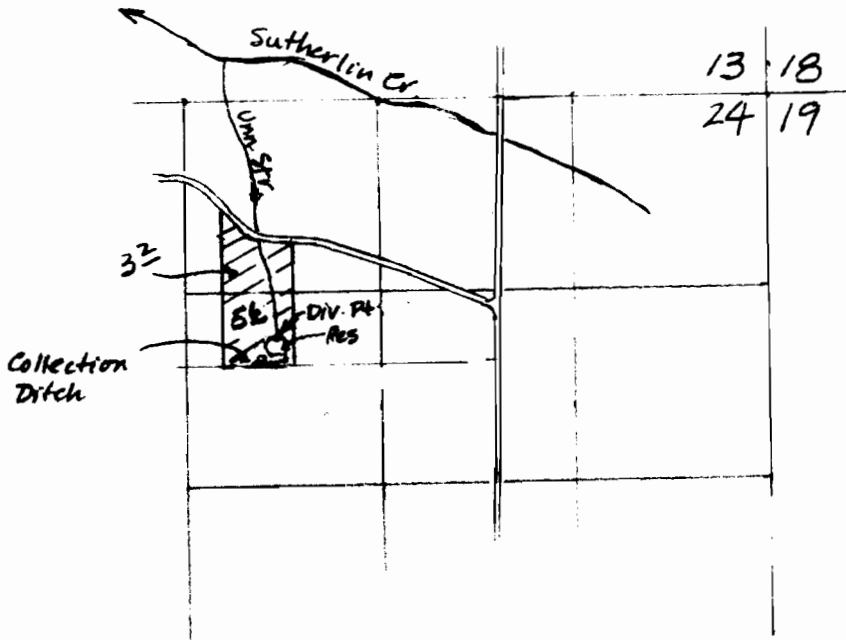


T. 25S. R. 5W.



Scale: 4" = 1 mile

DIV. PT. 1620' S. and 3350' W  
from NE Cor. Sec. 24

**RECEIVED**

AUG 13 1984

WATER RESOURCES DEPT  
SALEM, OREGON

**RECEIVED**

JUL 2 1984

WATER RESOURCES DEPT  
SALEM, OREGON

Application No. <sup>R-</sup> 68112 & 68113

Permit No. R10051 48992

**RECEIVED**

NOV 7 1984

WATER RESOURCES DEPT.  
SALEM, OREGON