

29 T35S R5W W.M.
PHINE COUNTY

1" = 400'

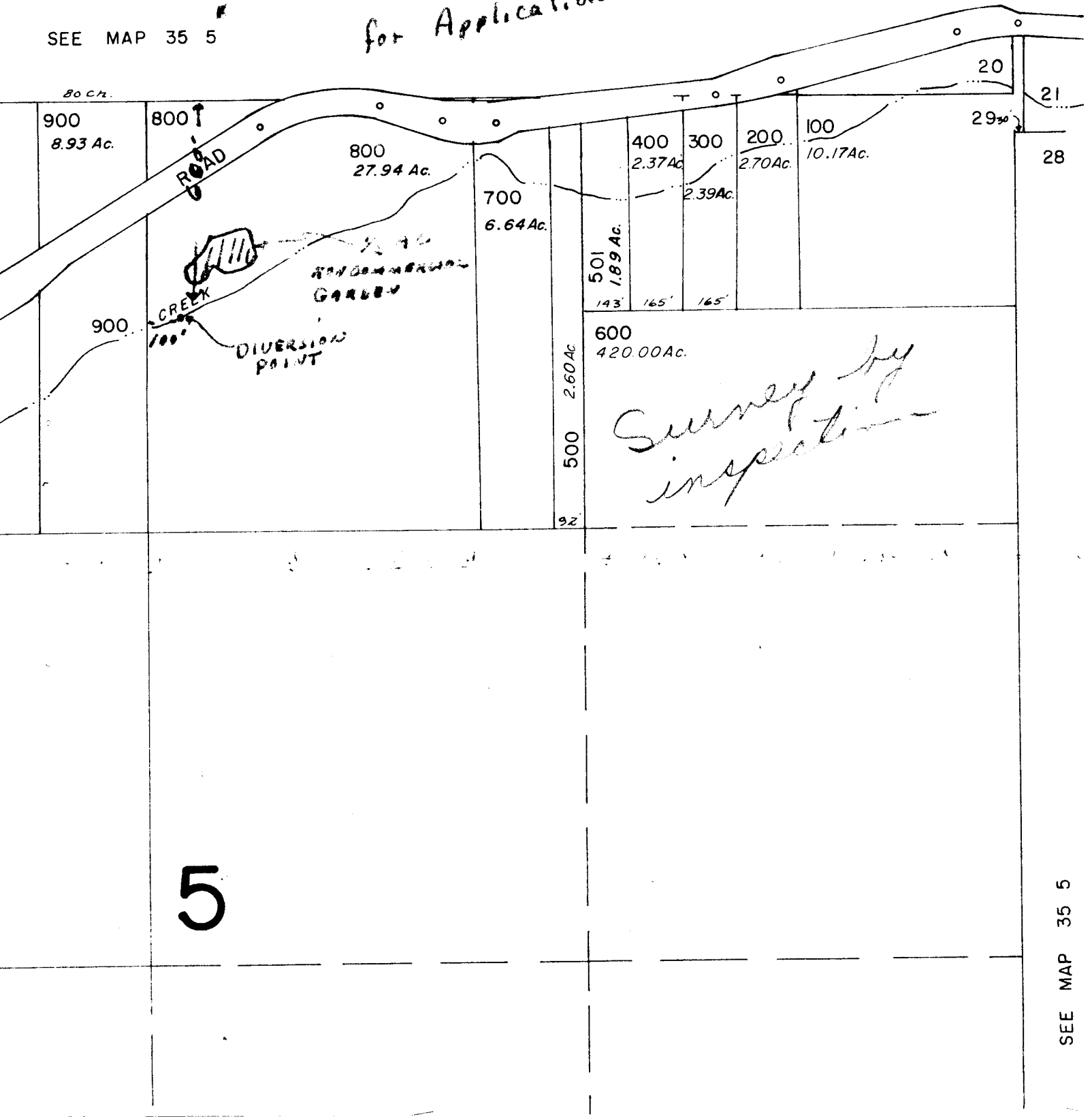
SEE MAP 35 5

Permit: S 48993
Volume: 5
Strm: LOUSE CR
Trib: JUMPOFF JOE CR
Priority: 7/26/84

3

FRANK J. and Helen L. Kna
3090 Granite Hill Rd
Grants Pass, OR 97526 P24

Amended Map
for Application 68133 J.K.



SEE MAP 35 5