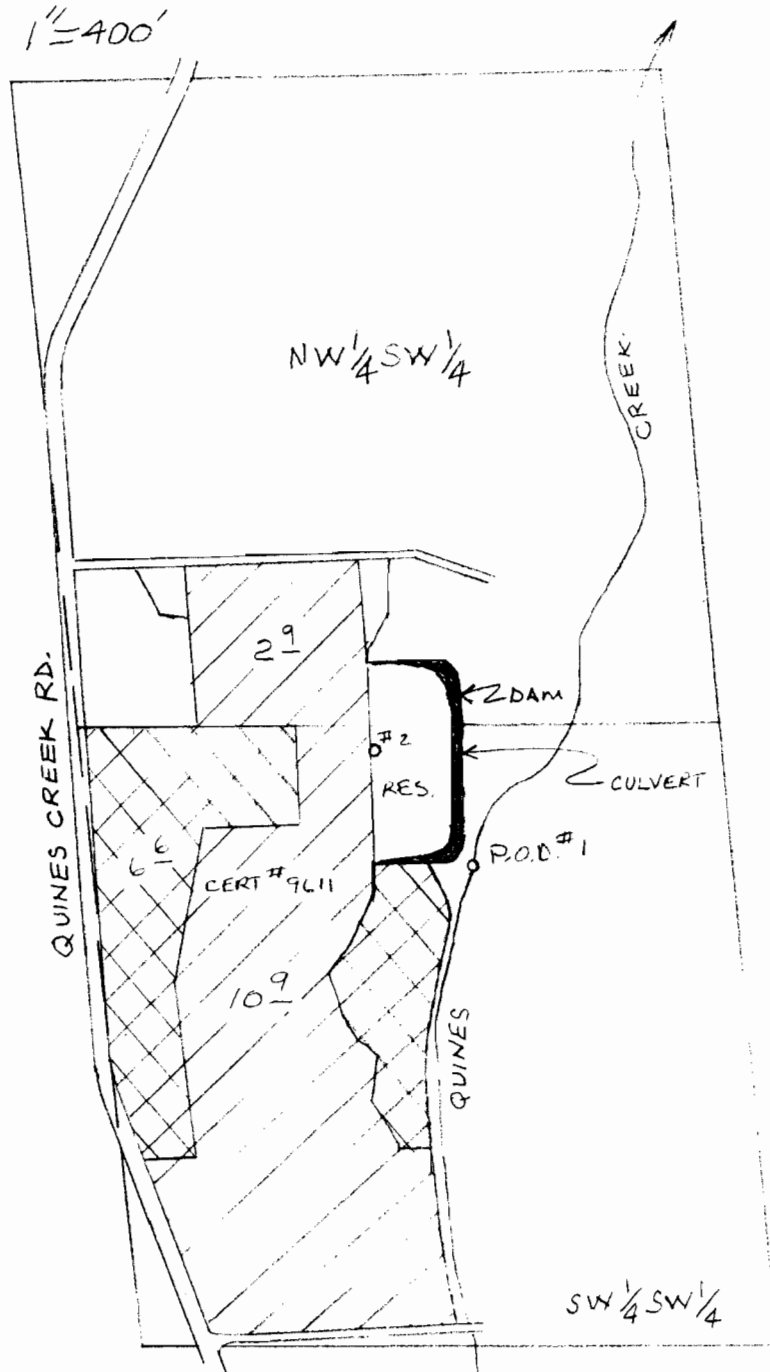


OCT 19 1995

WATER RESOURCES

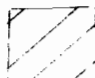
201

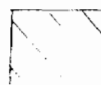
T. 32 S., R. 5 W., W.M.
SEC. 26



#1
P.O.D. - 1000' N & 680' E
FROM SW COR SEC. 26

#2 1240' N & 500' E
FROM SW COR SEC. 26

 - SUPPLEMENTAL FROM RES.

 - PRIMARY FROM CR.

Application No. 67695, R. 67694
Permit No. 49211 R10417