

1/4 SW 1/4

1/4 SW 1/4

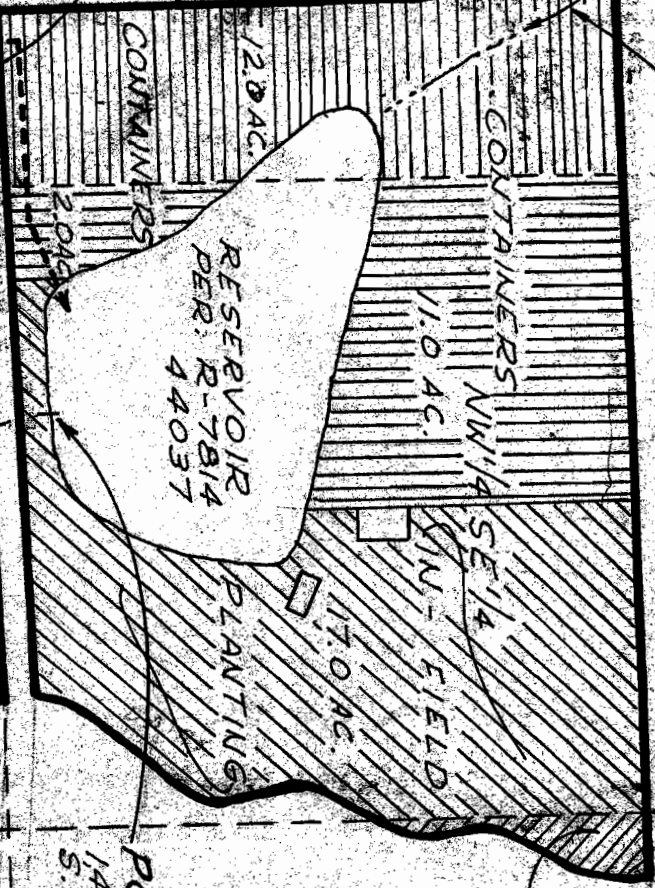
NE 1/4 SW 1/4

WELL NO. 1
1,140' N & 2,880' W
S.E. COR. SECT. 2



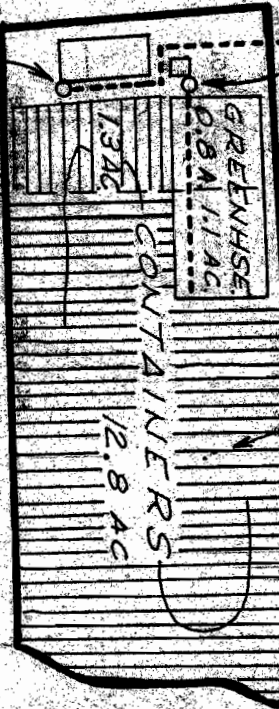
SE 1/4 SW 1/4

UNNAMED INTERMIT. STR.



WELL NO. 2
900' N & 2,900' W
S.E. COR. SECT. 2.

SW 1/4 SE 1/4



POINT OF
1,450' N &
S.E. COR. S.

S.E.