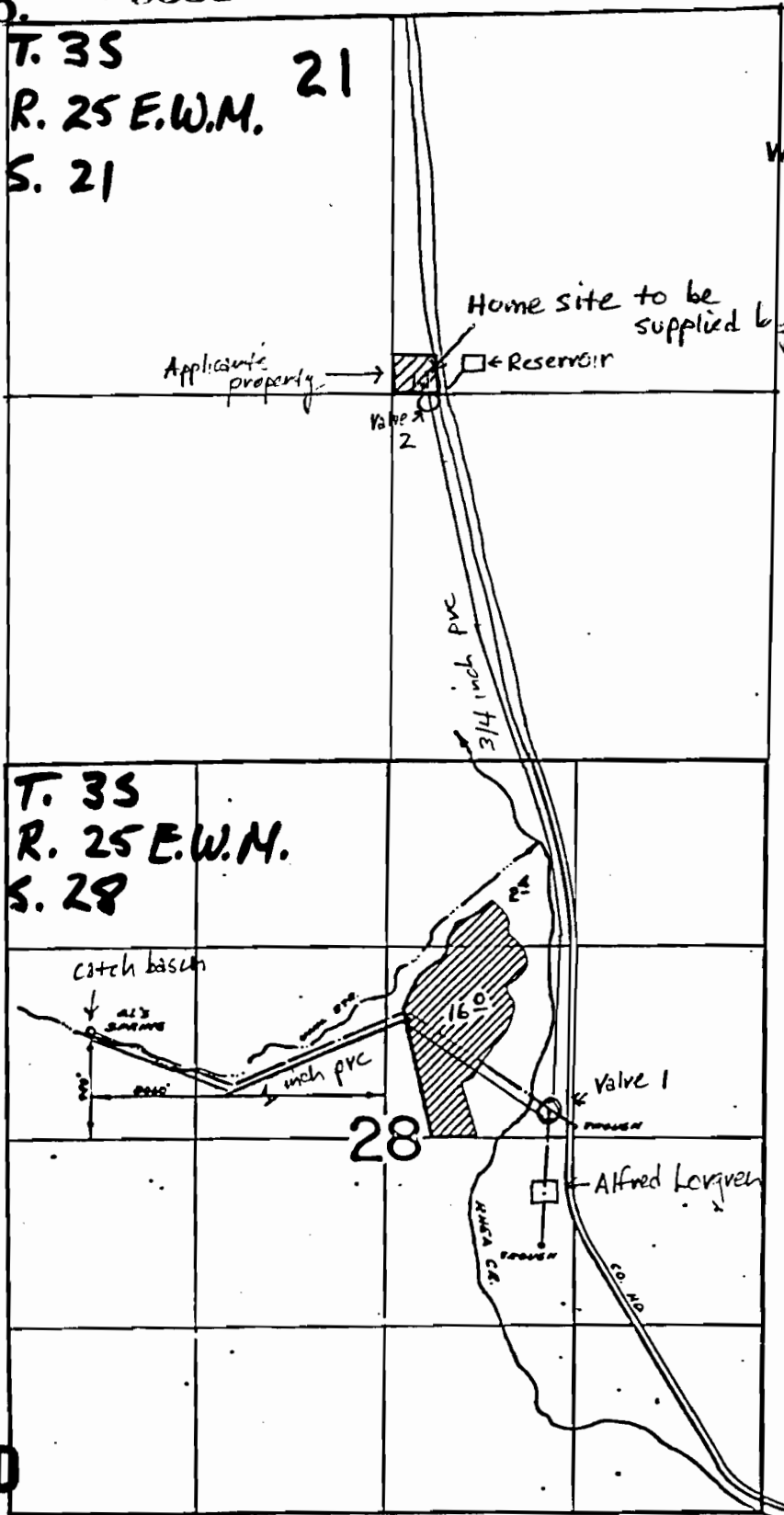


Application No. 68415  
 Permit No. 49583

**RECEIVED**  
 JUN 27 1985  
 WATER RESOURCES DEPT  
 SALEM, OREGON



**RECEIVED**  
 AUG 29 1985  
 WATER RESOURCES DEPT  
 SALEM, OREGON

Home site to be supplied by this application

Legend

— Water line

Distances

- Catch basin to Valve 1 = 1/4 mile (approximate)
- Valve 1 to Valve 2 = 1 mile (approximate)
- Valve 2 to Reservoir = 221 ft

**RECEIVED**

JUN 27 1985  
 WATER RESOURCES DEPT.  
 SALEM, OREGON