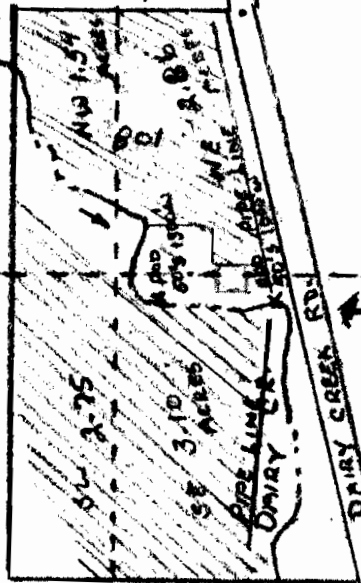


W 1/2 SECTION 22 TAN R3W W.M.
SCALE 1" = 400'

RECEIVED
MAY 21 1985
WATER RESOURCES DEPT
SALEM, OREGON

RECEIVED
DEC 18 1985
WATER RESOURCES DEPT
SALEM, OREGON

SW NW
SE NW



NW SW
NE SW

Application No. 68357
Permit No. 49599

RECEIVED

JUL 20 1985
WATER RESOURCES DEPT
SALEM, OREGON