

SECTION 6 T14S R9W WM
LINCOLN COUNTY

1" = 400'
See Map 13 9

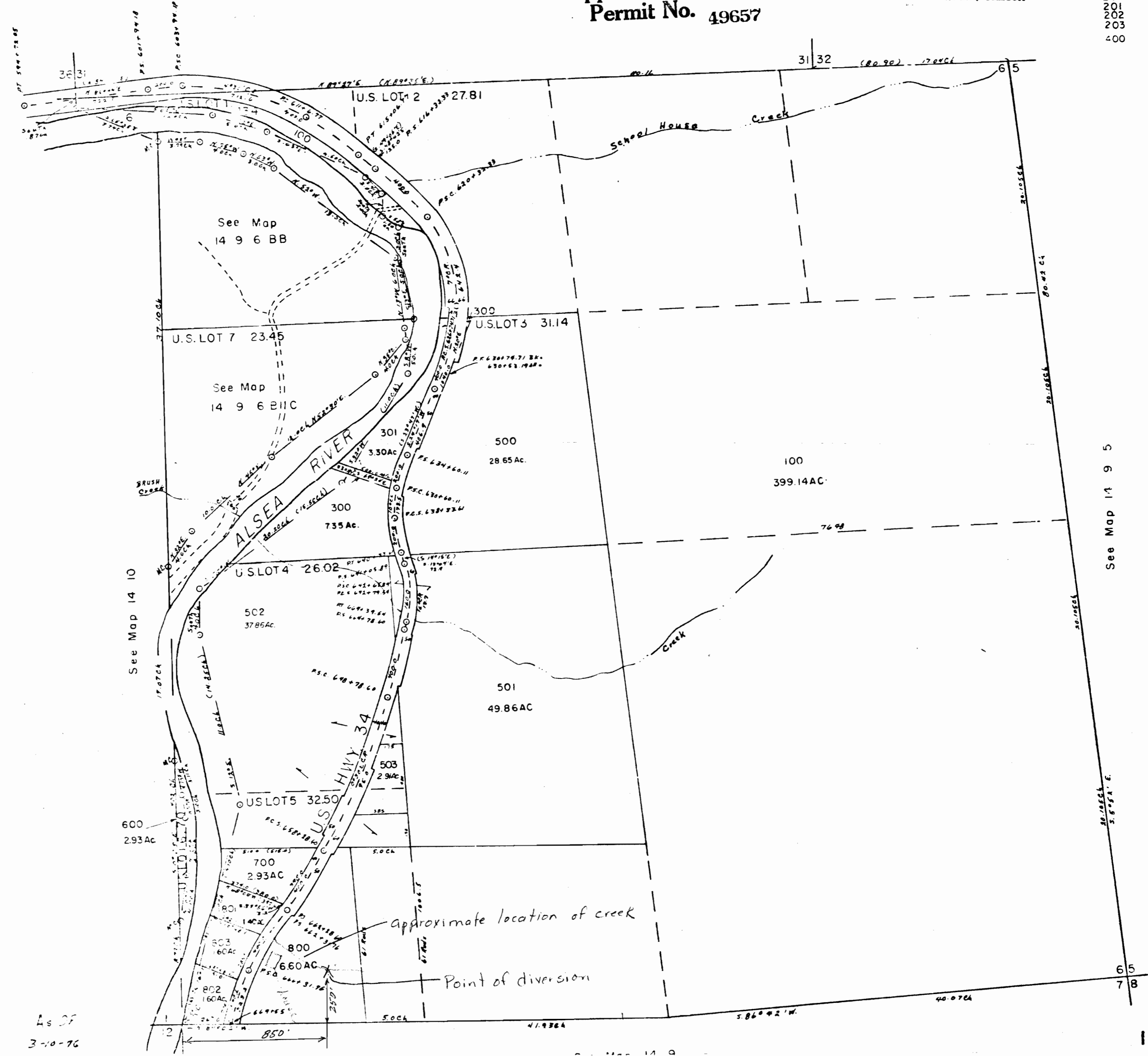
CODE 300

Application No. 68663
Permit No. 49657

RECEIVED
JAN 23 1986
WATER RESOURCES DEPT
SALEM, OREGON

14 9 6
RECEIVED
MAR 13 1986
WATER RESOURCES DEPT
SALEM, OREGON

Dead No.
200
201
202
203
400



INSURANCE
OR COMPANY

As of
3-10-76

14 9 6