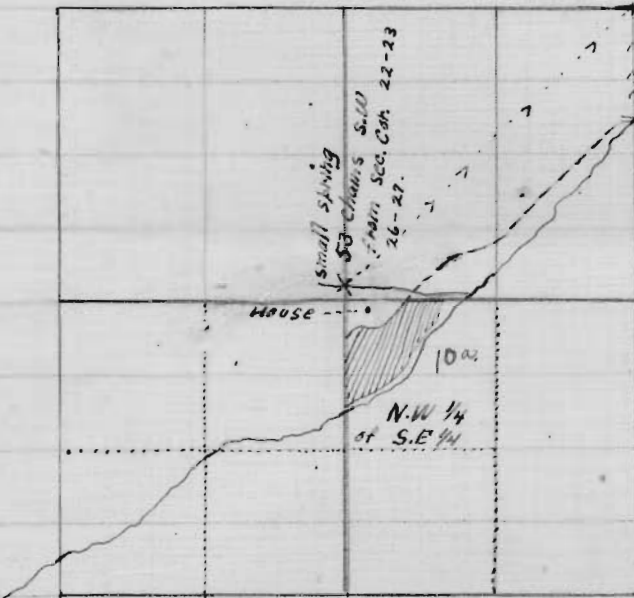


Sec. 27, Twp. 28. S. R. 4. W.



Point of diversion
15 Chains 25/100ths south of
Sec. Corner 22-23-26-27

1,010'

Dotted line = ditch
Shade = irrigated land.

Application No. 7797

Permit No. 4991

OFFICE OF STATE ENGINEER

RECEIVED

MAR 21 1921

SALEM, OREGON