

NW1/4 SEC. 18 T.30S. R.1W. W.M.
DOUGLAS COUNTY

30 1 18B

THIS MAP WAS PREPARED FOR
ASSESSMENT PURPOSE ONLY.

1"=200'

RECEIVED

NOV 6 1986

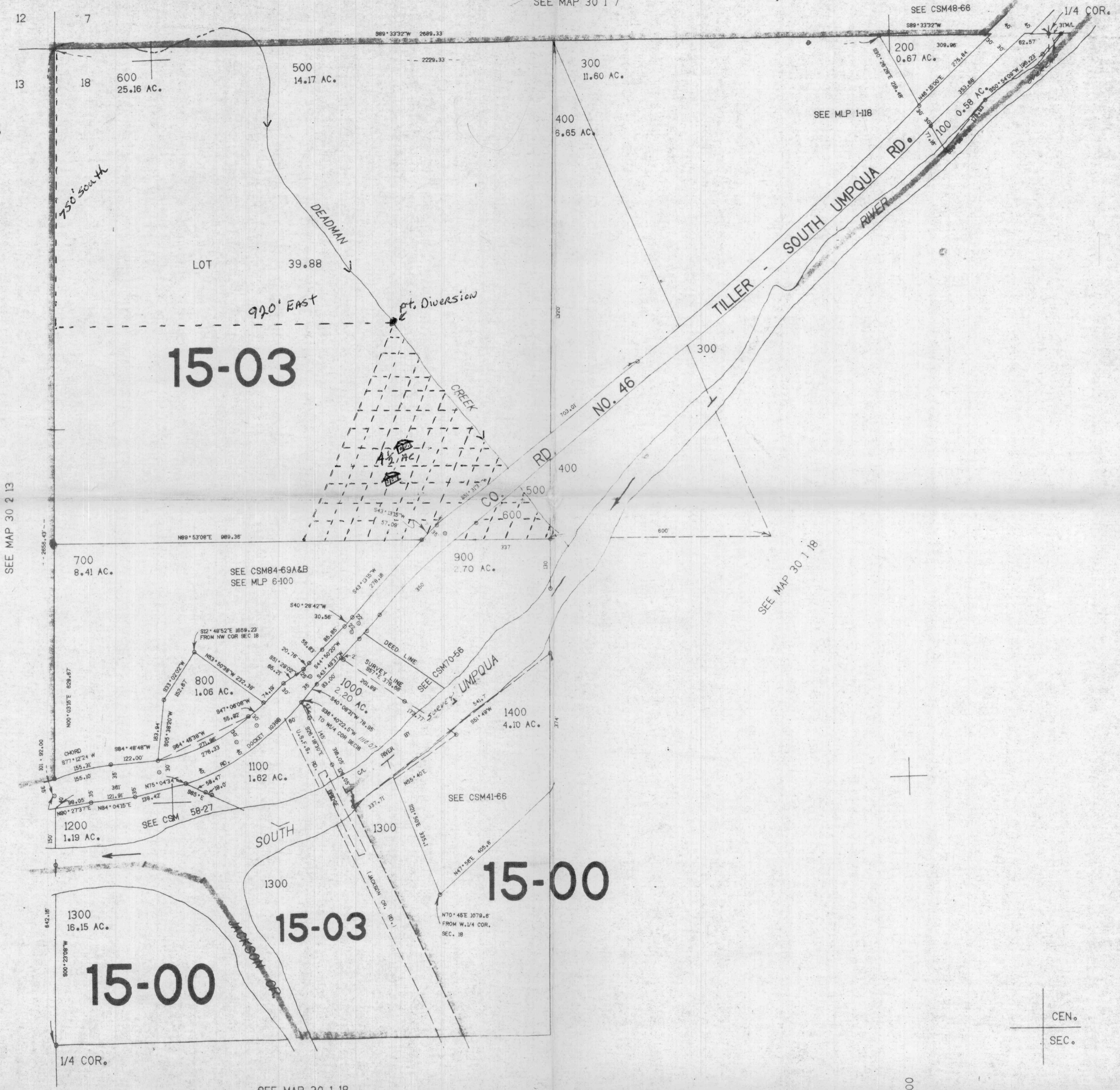
WATER RESOURCES DEPT.
SALEM, OREGON

Application No. **68931**
Permit No. **49946**

SEE MAP 30 1 7

SEE CSM48-66

SEE MLP 1-118



15-03

15-00

15-00

15-03

*Bill Report July 1980
of Number*



CEN.
SEC.

1365.000

484.000

30 1 18B